



Montgomery College Construction Project Updates

Takoma Park / Silver Spring Campus

March 7, 2023

Welcome and Introductions

Michael Akin

President, LINK Strategic Partners

David Coleman

Project Director, Barton Malow

Paul Grossman

Senior Project Manager, Barton Malow

Dr. Brad Stewart

Vice President and Provost, Takoma Park /
Silver Spring Campus, Montgomery College

Drew Overton

Project Manager, Gilbane

Matt Karle

Director of Special Projects, Gilbane

Meeting Agenda

1. Leggett Building

- Project Progress and Updates
- Questions and Answers

2. Library/Resource Center Renovation

- Review Design and Construction Directives
- Project Updates
- Questions and Answers

Catherine & Isiah Leggett Math & Science Building

Meeting Agenda

- 1. Current Construction Project Status**
- 2. Progress Update**
- 3. Logistics**

Project Update: Existing Conditions



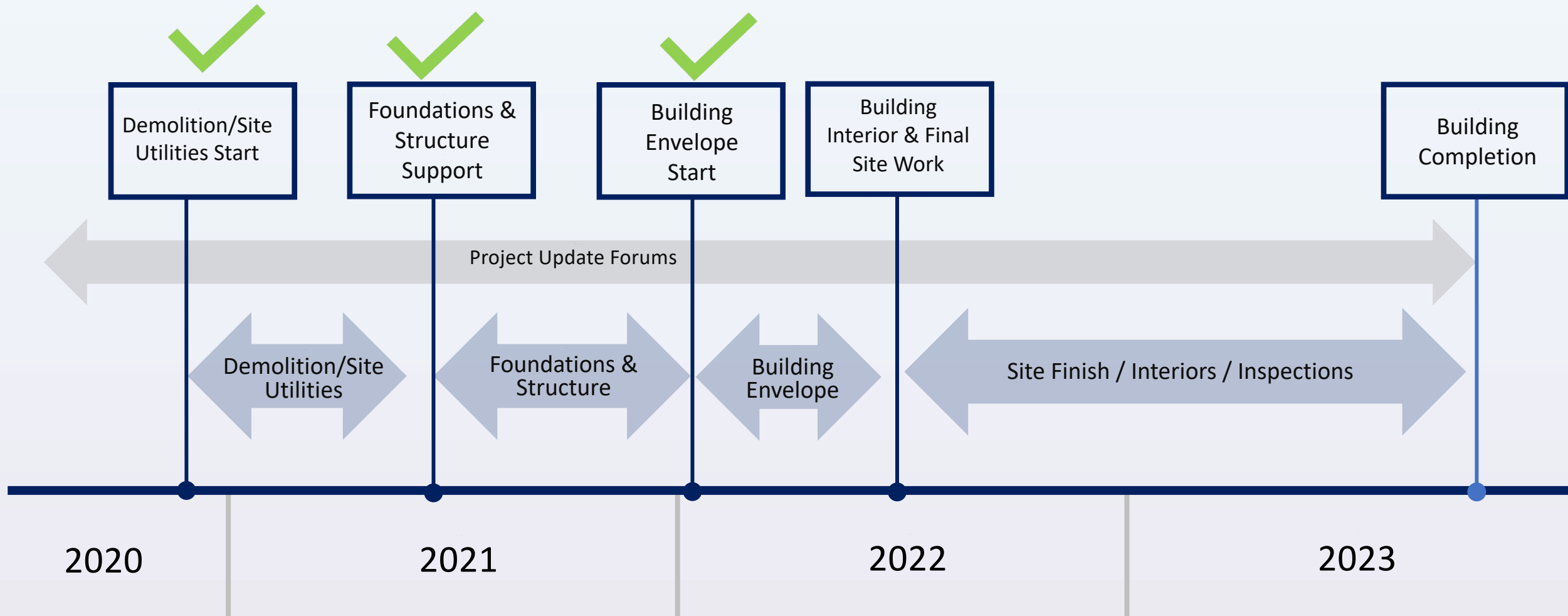
Existing Conditions



Buy
Dev
Pre

Construction Overview Timeline

Looking Ahead



Ongoing Work – Enclosure

What is “enclosure”?

- What everyone sees from the outside plus the required support/back-up
- Materials: metal studs, masonry/brick, roof, windows/glazing



STEP 1



STEP 2



STEP 3

Ongoing Work – Enclosure

Deliveries

- Block
- Brick
- Mortar
- Rebar

Tools / Process

- Mortar Storage Silo
- Mortar Mixer
- Sawcutting
 - Masonry / Rebar
- Hand tools – End of the day cleaning of tools



Mortar Storage Silo

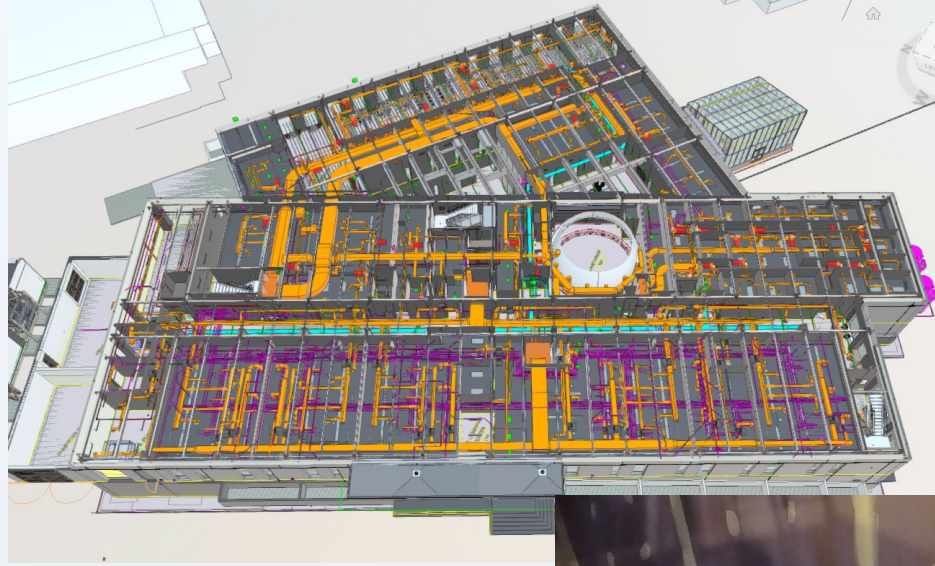


Mortar Mixer

Ongoing Work – Metal Stud Framing



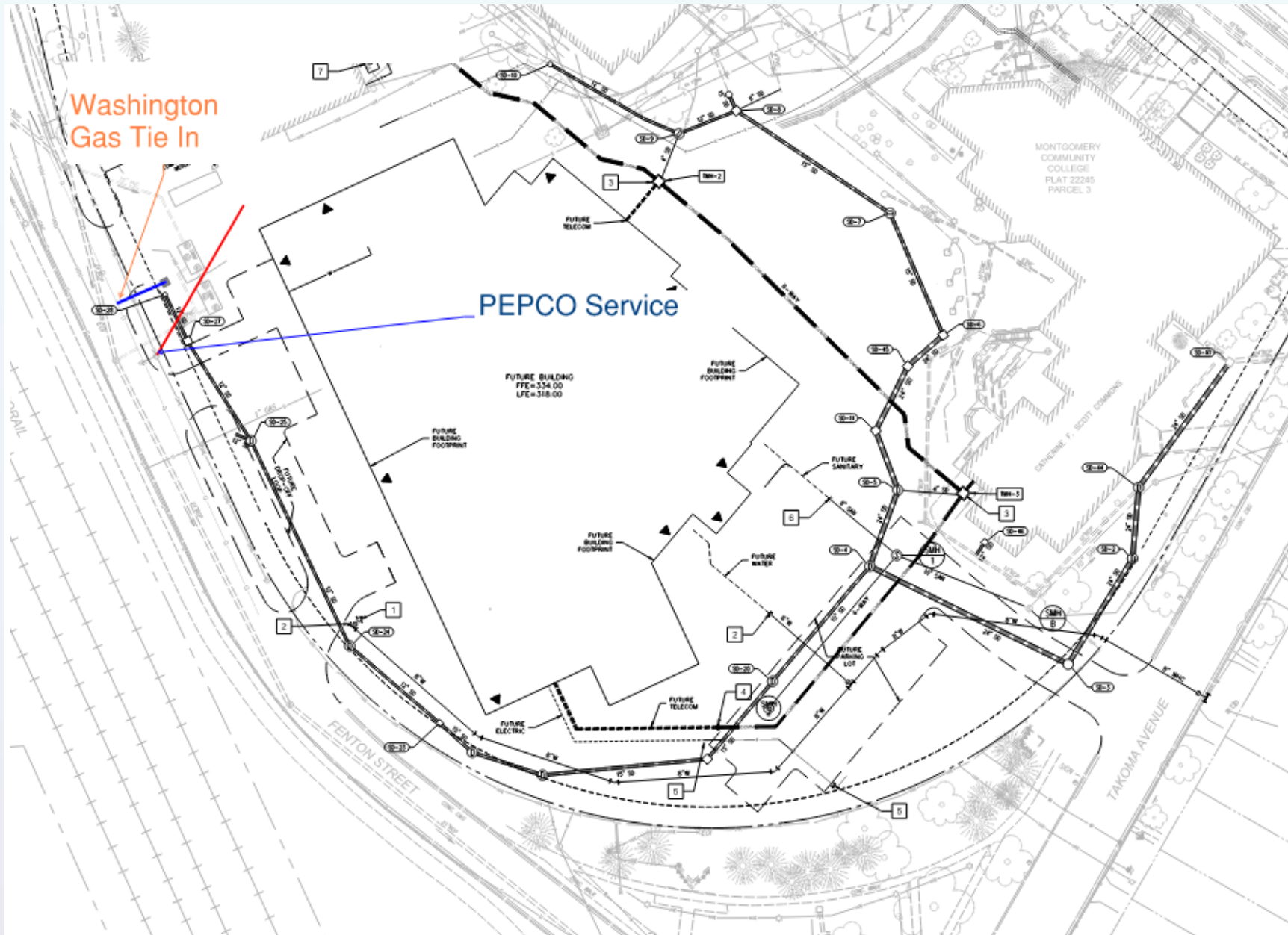
Ongoing Work – Mechanical Phase



Upcoming Work

- Utility Connections: Pepco and Washington Gas
- Sitework / paving / curb and gutter adjacent to Takoma Ave





UTILITY CONNECTIONS

- Barton Malow to provide additional traffic support if required.

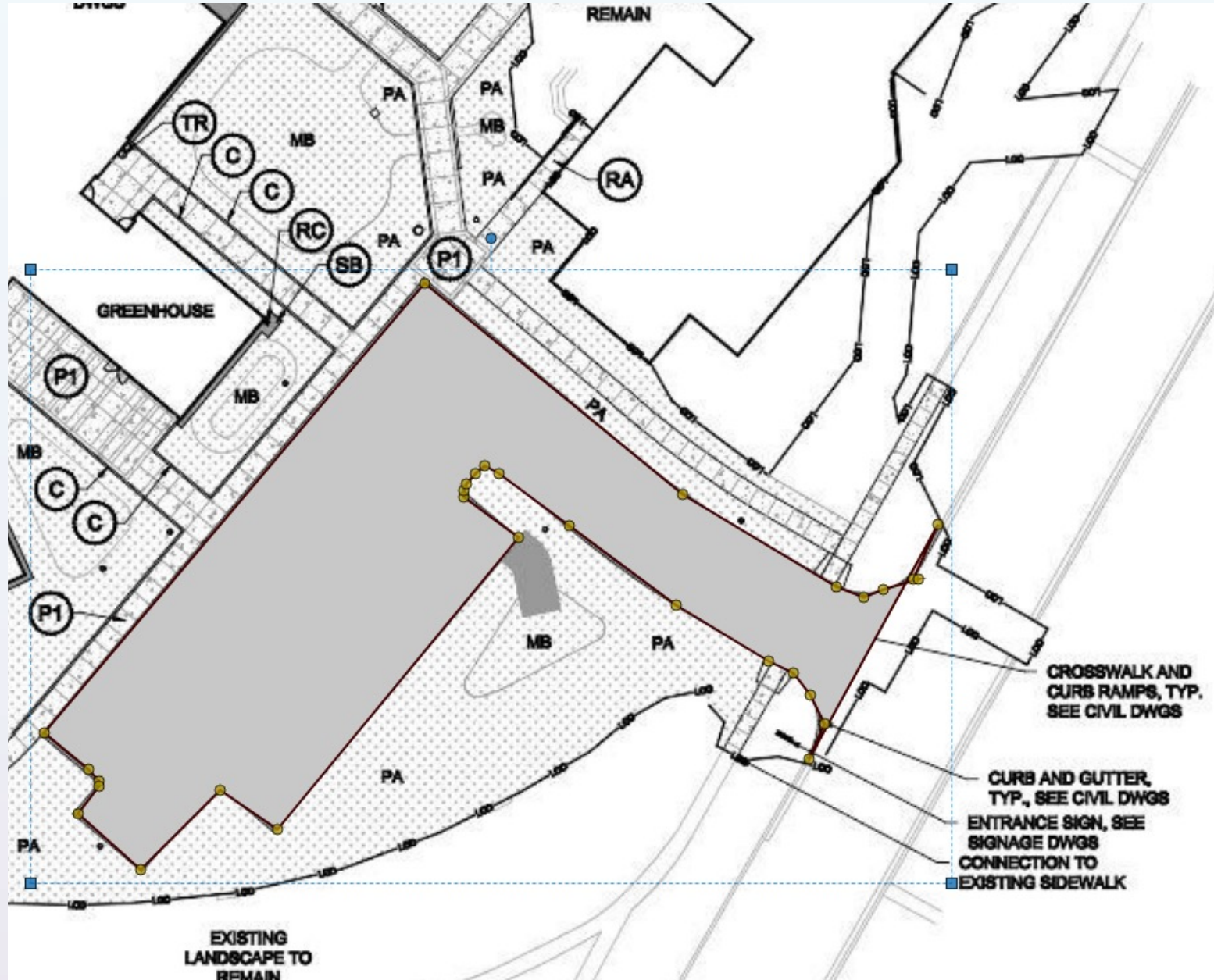
PEPCO Service

- Conduit run from telephone pole to underground connection and then run underground onto site.

Washington Gas Service

- Underground connection and run onto site.

Parking Lot and Entrance – Takoma Ave



Schedule : Start May, 90 Day
Duration

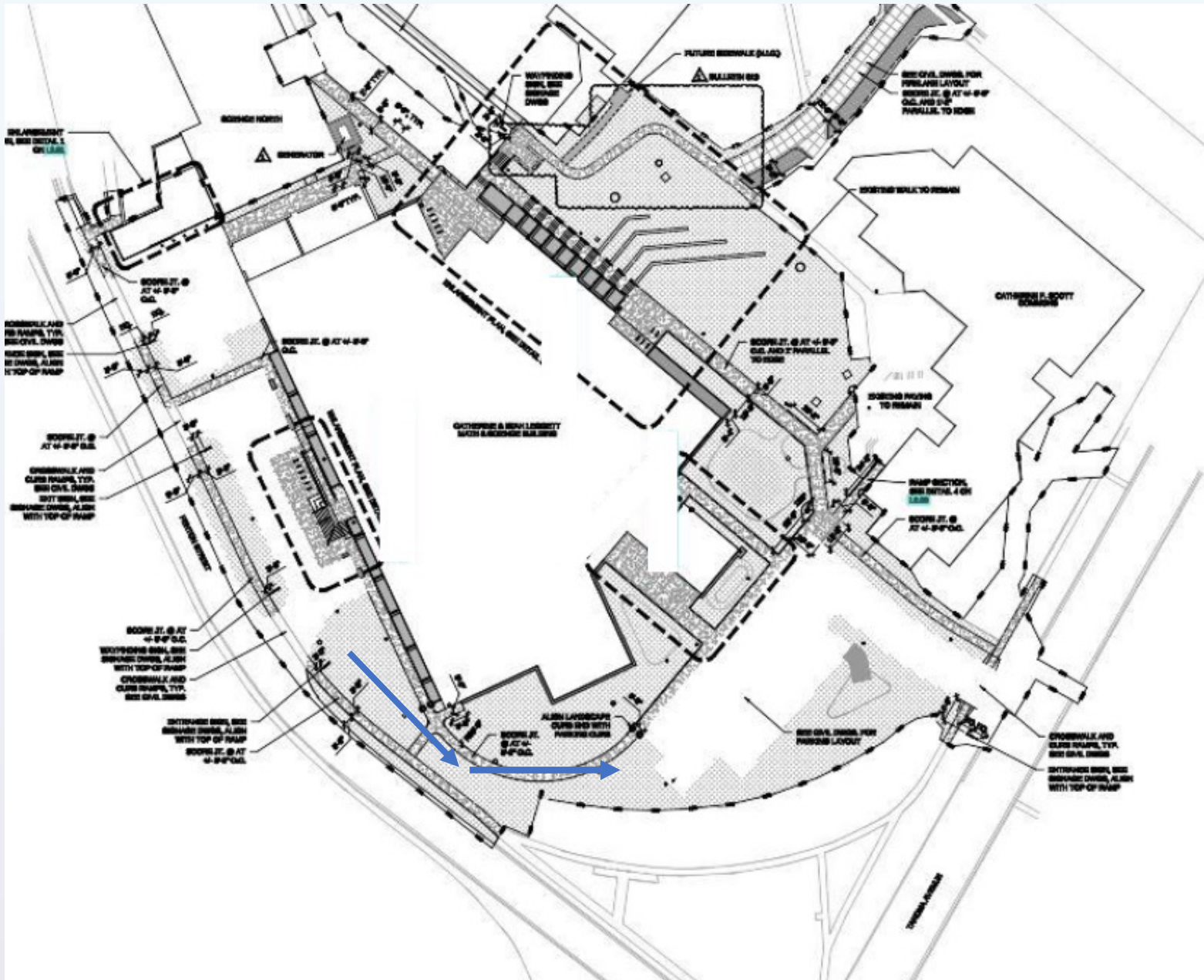
Work to be Completed

- Grading
- Paving
- Landscaping
- Site Lighting

Equipment / Machinery

- Back hoe / Excavator
- Paving Milling Machine
- Dump Trucks
- Concrete Trucks

Parking Lot and Entrance – Takoma Ave



Goal – Minimize traffic on Takoma Ave

Plan – Minimize Traffic on Takoma Ave

- Delay Sidewalk adjacent to building to allow for as much mobilization as possible
- Tie into to Takoma -
 - Block off parking lane near entrance.
- Once Complete entrance will be barricaded and will not be used
- Asphalt Paving Delivery Enter through Takoma entrance.
- Asphalt Paver on truck to exit onto Takoma Ave



Logistics

Current Delivery Situation

- Typical deliveries (concrete, pick up truck, box trucks, trailers) all enter / exit at Fenton St. - **this will not change**



Current Delivery Situation

- Large Equipment Deliveries – Roof Insulation, Mechanical and Electrical Units



TYPICAL 60' LOW BOY TRAILER



LONG FLAT BED TRUCKS

Questions & Answers

LINK STRATEGIC PARTNERS

MC MONTGOMERY
COLLEGE

Library/Resource Center Renovation

Library/Resource Center Agenda

1. Directives

- Design and Construction

2. Project Updates

3. Site Logistics

4. Timeline

What is the Project?

Renovation of the Library in the Resource Center building, in order to:

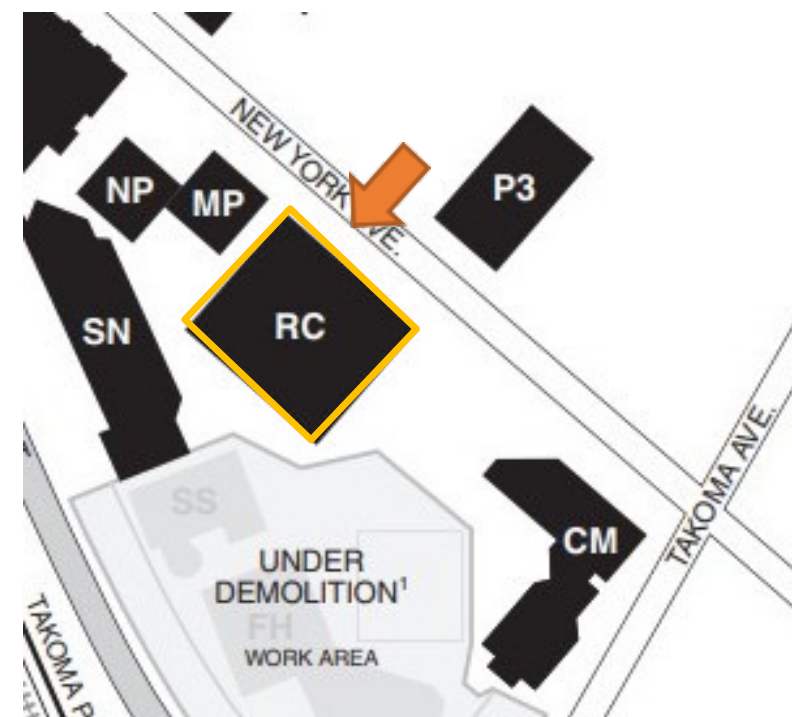
- Modernize the library
 - Better serve our students
 - Improve facilities for library staff
 - Enhance ADA compliance
 - Increase safety

Design Directives

- Retain the current size of the building, except for the enclosure of the existing main entryway and electrical corridor at the lower level.
- Maintain the height of the existing building.
- Main entryway will continue to be oriented towards the Math Pavilion. Minimize changes to the entryway that faces New York Avenue.
- Any changes to the building façade and the main entryway will respect the building's location in a residential historic neighborhood.
- Minimize windows to mitigate light spill.
- Comply with all City, County, and State construction and permitting requirements including tree protection and hazardous material removal.



New façade and windows

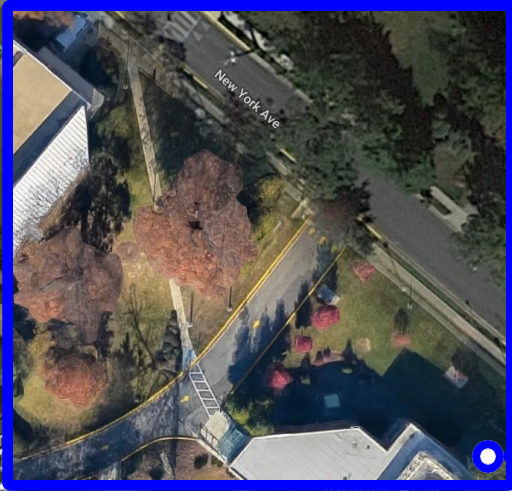
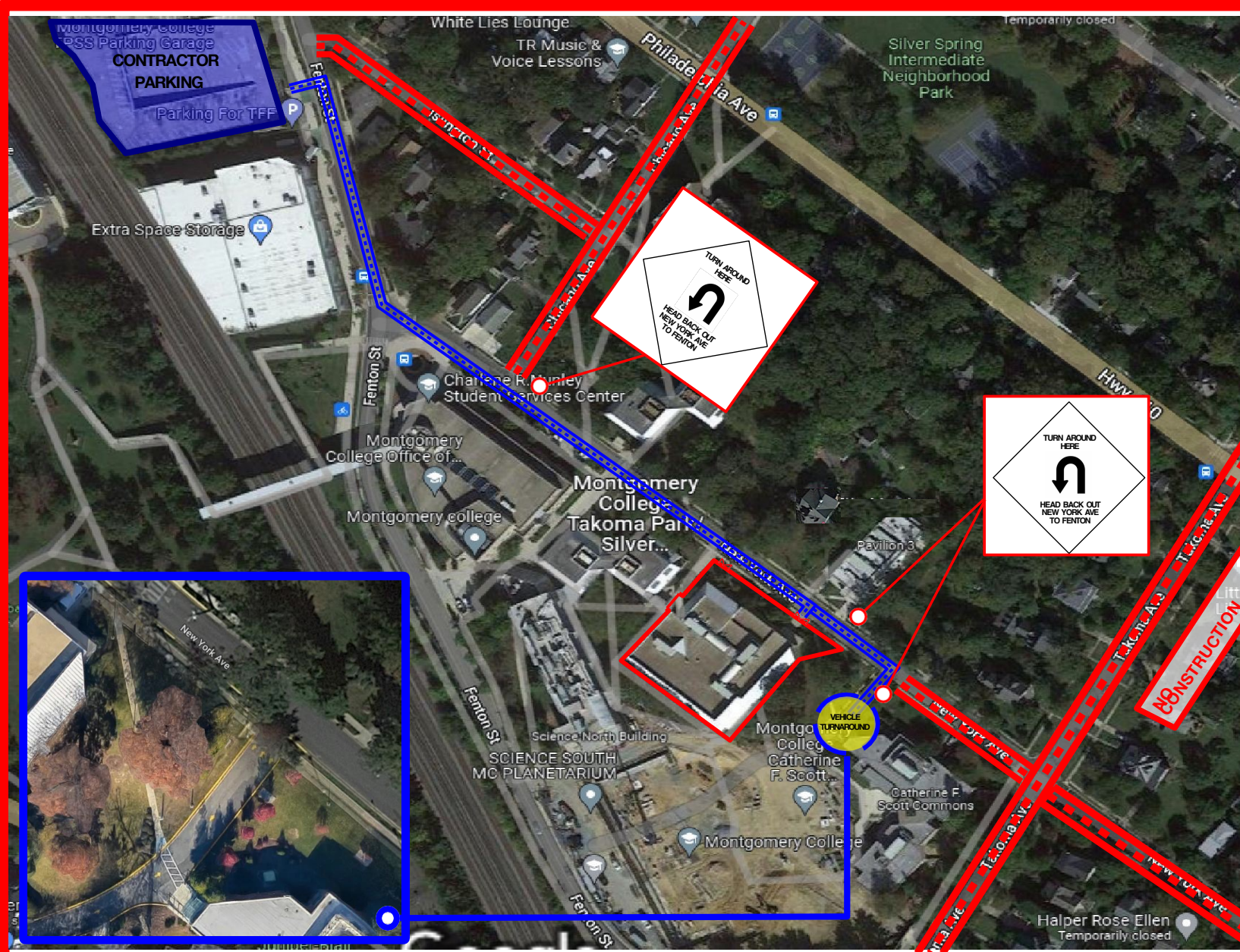




Construction Directives

- Adherence to the noise ordinance.
- To help with noise management, all exhaust systems on construction vehicles must be in good condition.
- Construction vehicles must not park on New York or Chicago Avenues or in the surrounding neighborhoods.
- Construction personnel may not park in the neighborhood, including metered parking spaces along Chicago Avenue.
- Temporary parking for delivery vehicles may only take place in the designated cutout on New York Avenue adjacent to the Nunley Student Services Building across from Pavilions 1 and 2 or on campus property, off New York Avenue.

Construction Directives, cont.

- Coordinate with the City and County regarding any temporary road closures, and provide at least a week's notice to the community.
- Implement a construction traffic plan to manage the impact of vehicle traffic on Chicago and New York Avenues. Project vehicles traversing New York Avenue may not proceed southeast bound beyond Academic Way. Construction vehicles will not be permitted on Takoma Avenue at any time.
- Comply with all City, County, and State construction and permitting requirements including tree protection, road closures, and hazardous material removal.



SITE LOGISTICS PLAN - MAINTENANCE OF TRAFFIC

UPDATED: 11/10/22

HOURS OF OPERATION: M-F, 7:00AM - 5:00PM

CONSTRUCTION TRAFFIC FLOW DOWN NEW YORK AVE

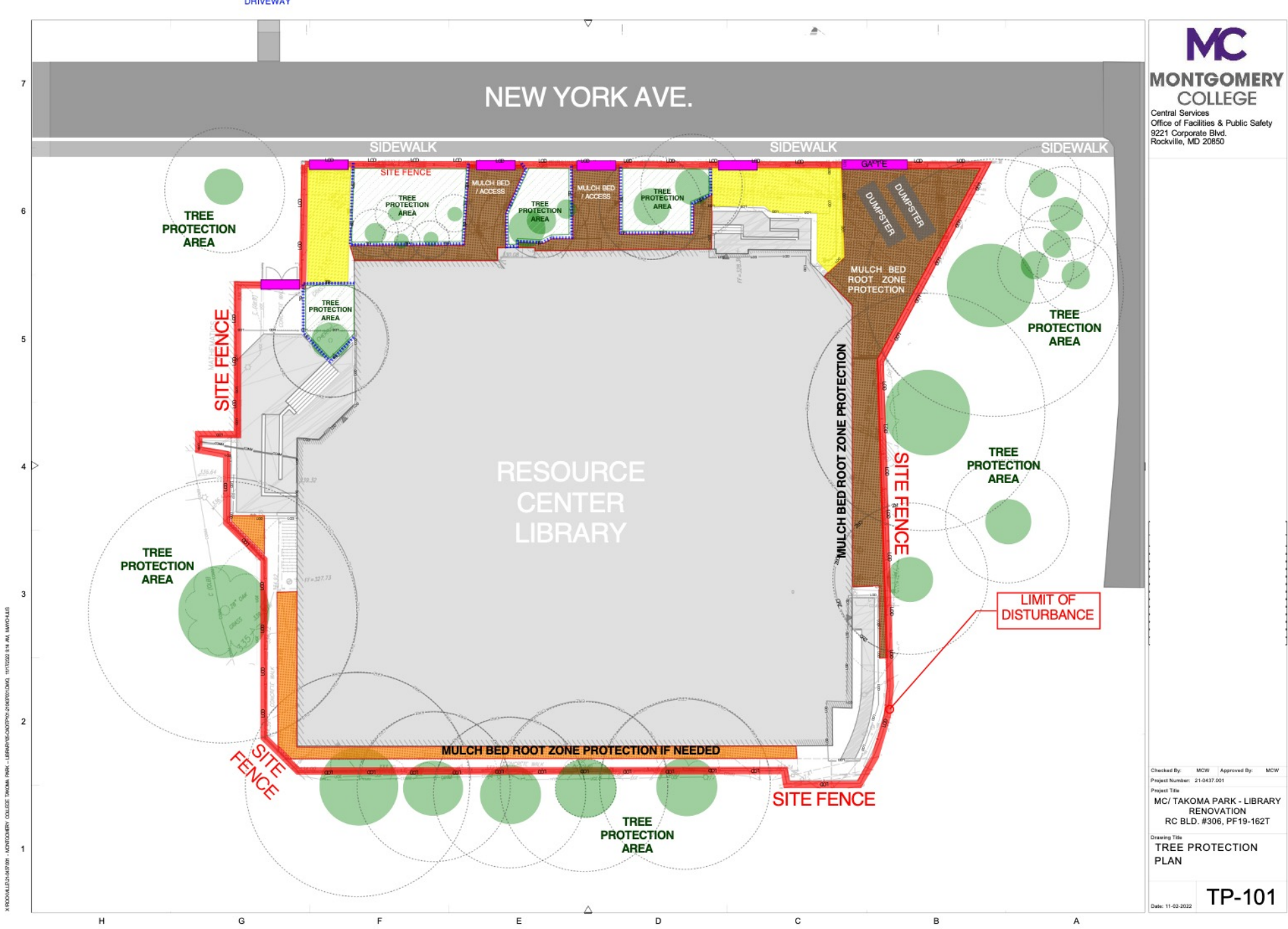
NO ACCESS ON TAKOMA AVE, NEW YORK AVE & ISLINGTON ST.

VEHICLE TURNAROUND

WAYFINDING SIGNAGE

FLAGMEN

GSLP-P1



MONTGOMERY COLLEGE

Central Services
Office of Facilities & Public Safety
9221 Corporate Blvd.
Rockville, MD 20850

Checked By: MCW Approved By: MCW
Project Number: 21-0437.001

Project Title
MC/ TAKOMA PARK - LIBRARY RENOVATION
RC BLD. #306, PF19-162T

Drawing Title
TREE PROTECTION PLAN

Date: 11-02-2022 **TP-101**

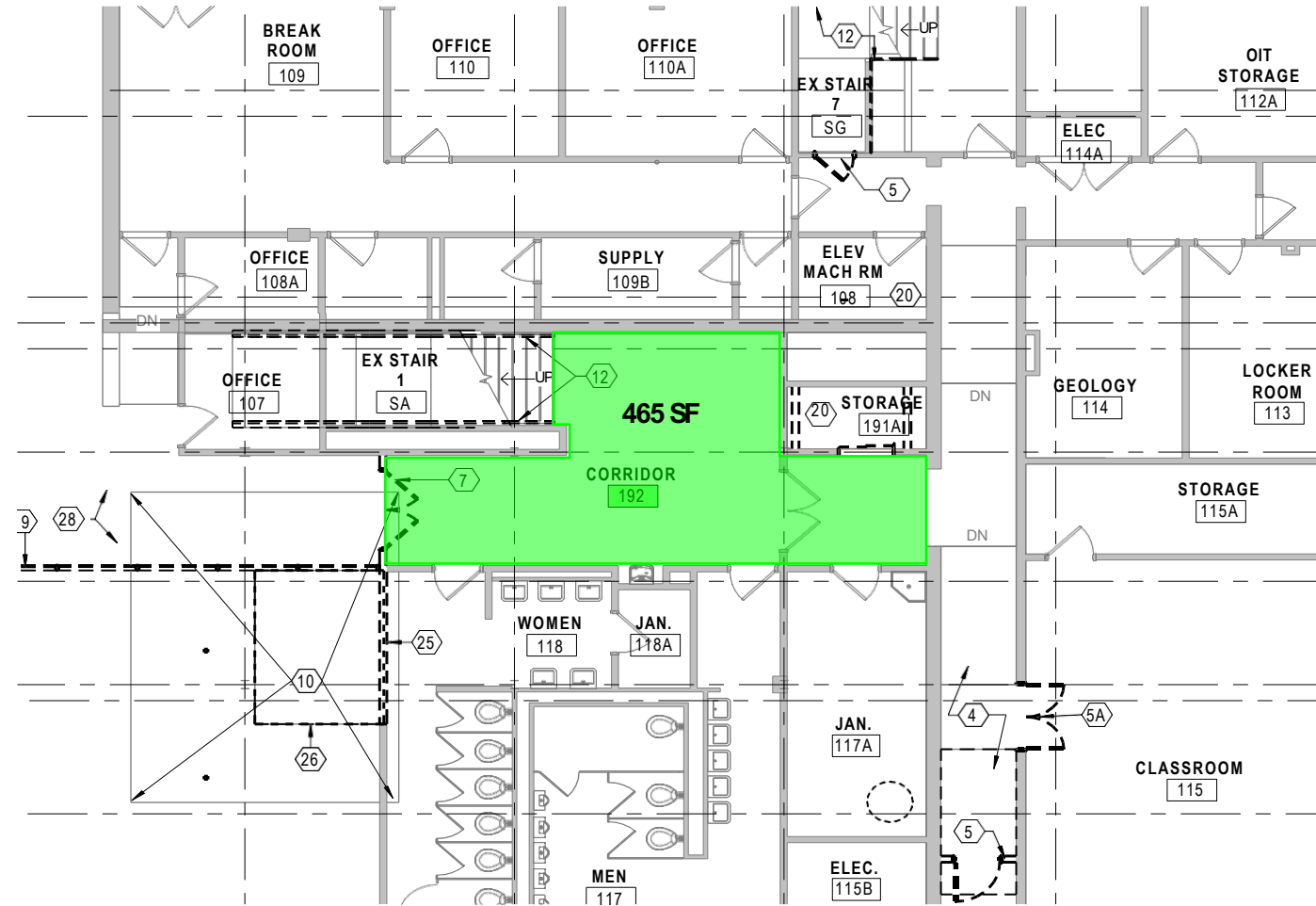
X:\000\15-0000\15-0000 - MONTGOMERY COLLEGE TAKOMA PARK - LIBRARY RENOVATION SUPERVISIONS: 11/02/22 BY: M. MARCUS

TREE PROTECTION FENCING & MULCH MAT PROTECTION



Asbestos Abatement

- Minor asbestos abatement of vinyl floor tile and duct insulation
- All procedures completed in compliance with state requirements
- Abatement work completed in one day



Fence Screen





ROLL OFF DUMPSTER TRUCK



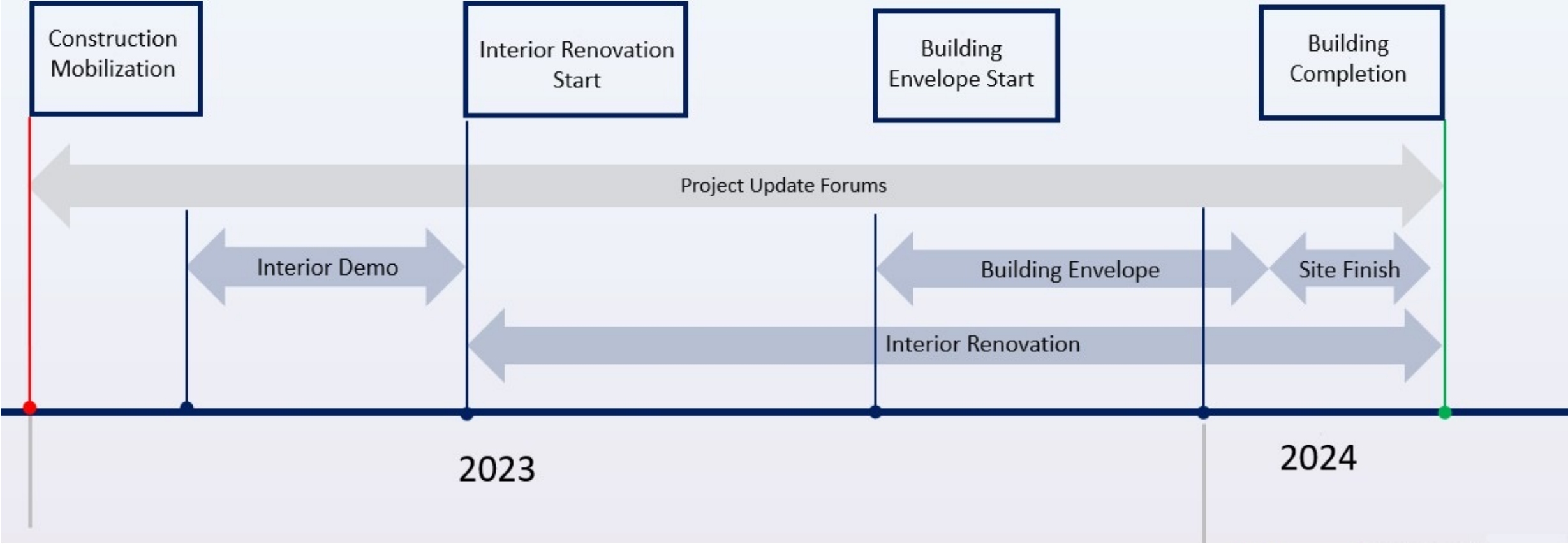
FLAT BED TRUCK



CONSTRUCTION WORK VAN

Construction Overview Timeline

Looking Ahead



Questions & Answers

LINK STRATEGIC PARTNERS

MC MONTGOMERY
COLLEGE

Stay in Touch!

Project Hotline 800-879-9879

Sign-Up for Email Updates

Home

Updates

Leggett Building ▾

Library Renovation ▾

HVAC Replacement ▾



**Project Hotline:
800-879-9879**

<https://mcblogs.montgomerycollege.edu/building-projects/>

Thank You!

LINK STRATEGIC PARTNERS

MC MONTGOMERY
COLLEGE