



Montgomery College Construction Project Updates

Takoma Park / Silver Spring Campus

December 13, 2022

Welcome and Introductions

Michael Akin

President, LINK Strategic Partners

David Coleman

Project Director, Barton Malow

Paul Grossman

Senior Project Manager, Barton Malow

Dr. Brad Stewart

Vice President and Provost, Takoma Park /
Silver Spring Campus, Montgomery College

Drew Overton

Project Manager, Gilbane

Matt Karle

Director of Special Projects, Gilbane

Meeting Agenda

1. Leggett Building

- Project Progress and Updates
- Questions and Answers

2. Library/Resource Center Renovation

- Review Design and Construction Directives
- Project Updates
- Questions and Answers

3. Pavilions 1 and 2 HVAC Replacement

- Project Updates
- Questions and Answers

Catherine & Isiah Leggett Math & Science Building

Leggett Agenda

1. Current Construction Project Status

- COVID-19 Operating Procedures

2. Progress Update

3. Logistics

Barton Malow COVID-19 Operational Procedures

We are committed to maintaining a healthy working atmosphere on site and will stay flexible to rapidly evolving guidelines.

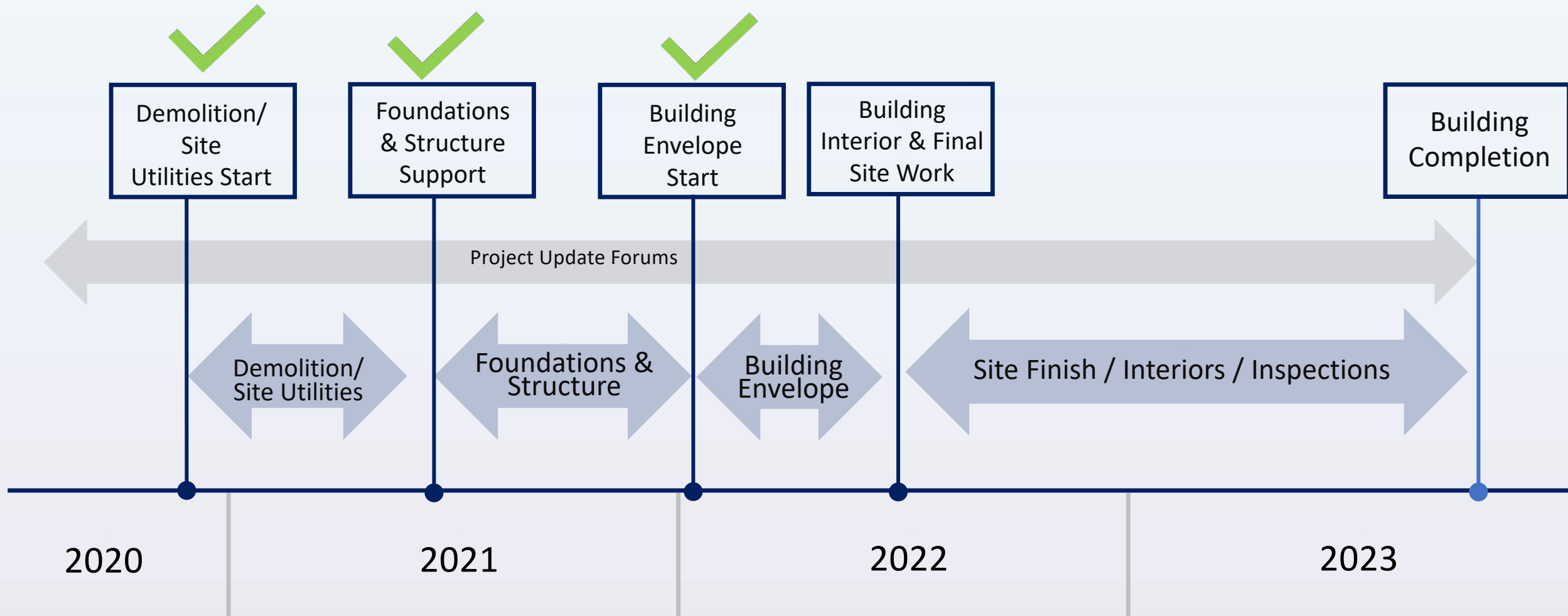
Barton Malow's plan follows CDC & local guidelines.

Social Distancing Measures

- 6' separation at daily foreman meetings
- Smaller group safety orientation meetings held more often than usual
- All work surfaces (i.e.: tables, chairs) cleaned following the meeting
- Cleaning of portable toilets increase to 2x week – onsite staff provided with bleach and cleaners
- Face-to-Face meetings held to a minimum – video meetings encouraged
- Workers to maintain 6' separation whenever possible.
- No congregation for lunch (i.e. no lunchroom)
- Should a worker report illness, a site investigation will be completed
 - Current Guidelines:
 - A worker with a positive result will return to the site following most recent CDC Guidelines.
 - Contact tracing investigation – workers identified that require testing and possible quarantine

Construction Overview Timeline

Looking Ahead



Existing Conditions



- Temporary Enclosure in place
- Temporary Heat in Place

Existing Conditions

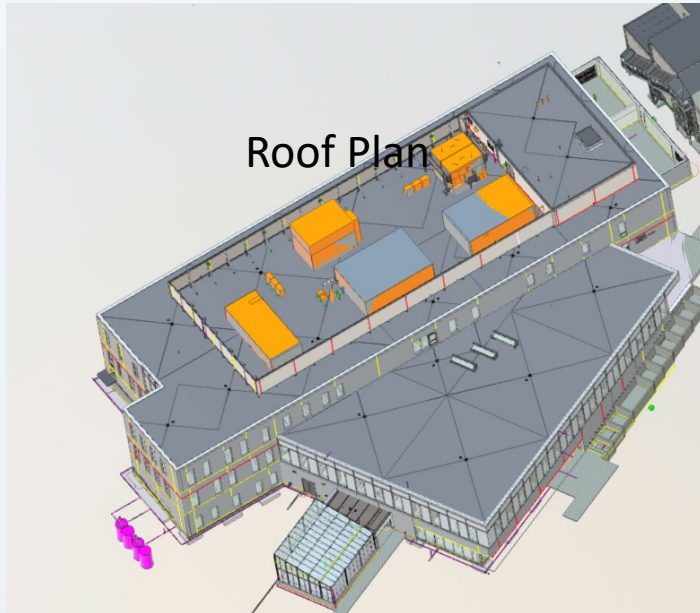


Existing Conditions



Bio Retention Structures

Ongoing Work – Rooftop



Roof Screen Wall Installation

Ongoing Work – Enclosure

What is “enclosure?”

- What everyone sees from the outside plus the required support/back-up
- Materials: metal studs, masonry/brick, roof, windows/glazing



✓ STEP 1



STEP 2 ✓



STEP 3

Ongoing Work – Enclosure

Deliveries

- Block
- Brick
- Mortar
- Rebar

Tools / Process

- Mortar Storage Silo
- Mortar Mixer
- Sawcutting
 - Masonry / Rebar
- Hand tools – End of the day cleaning of tools

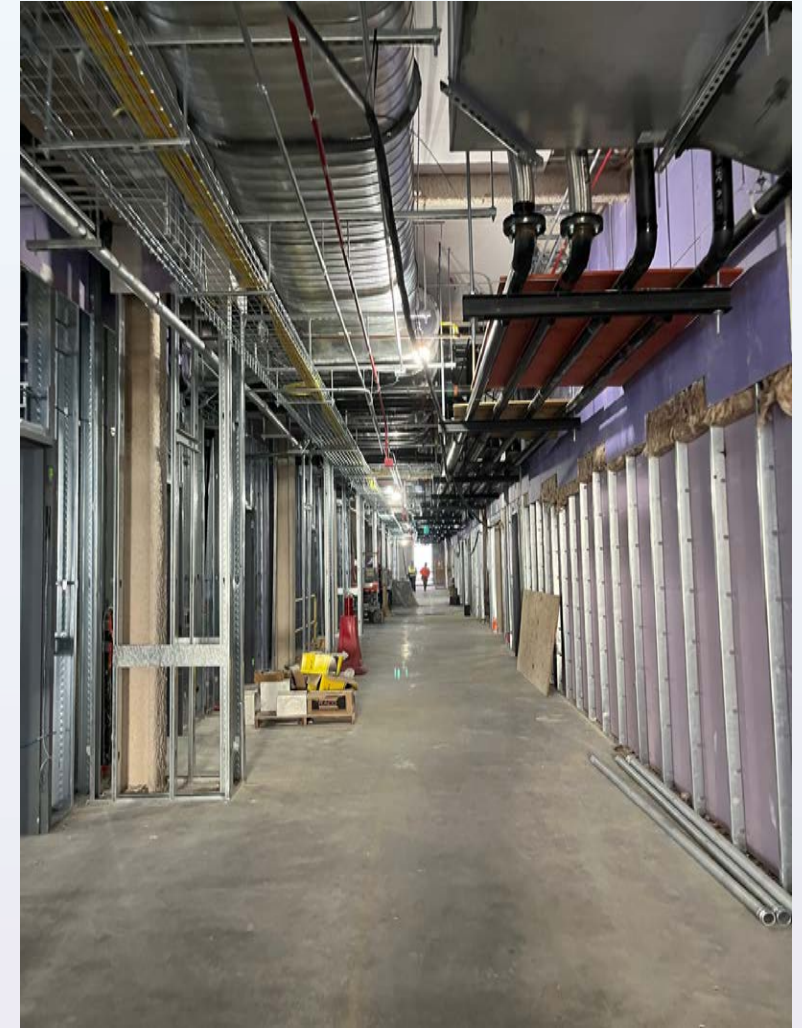


Mortar Storage
Silo

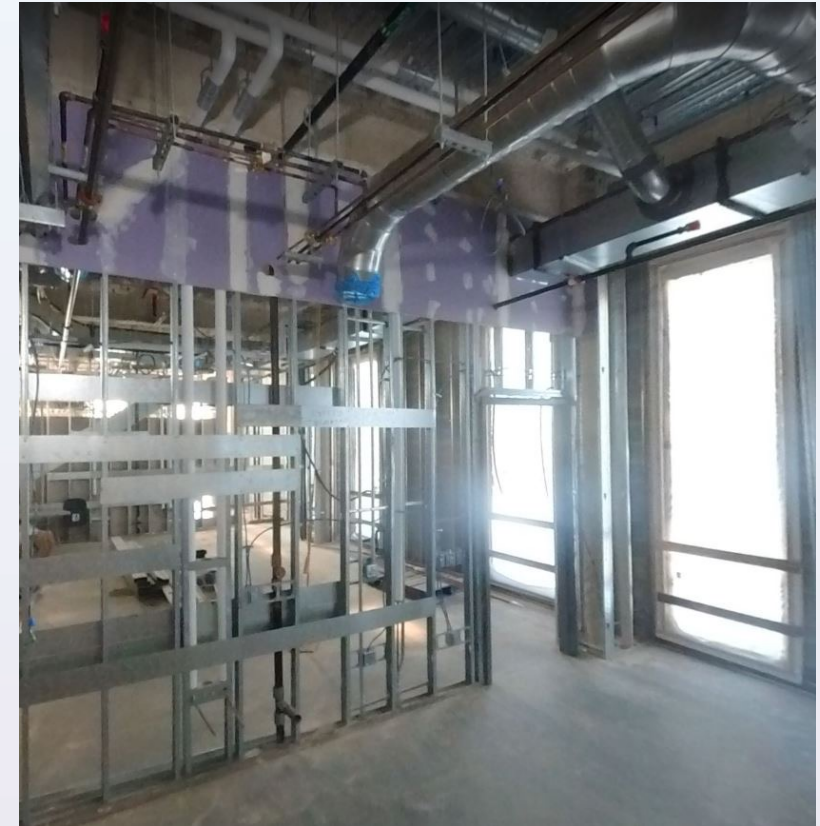
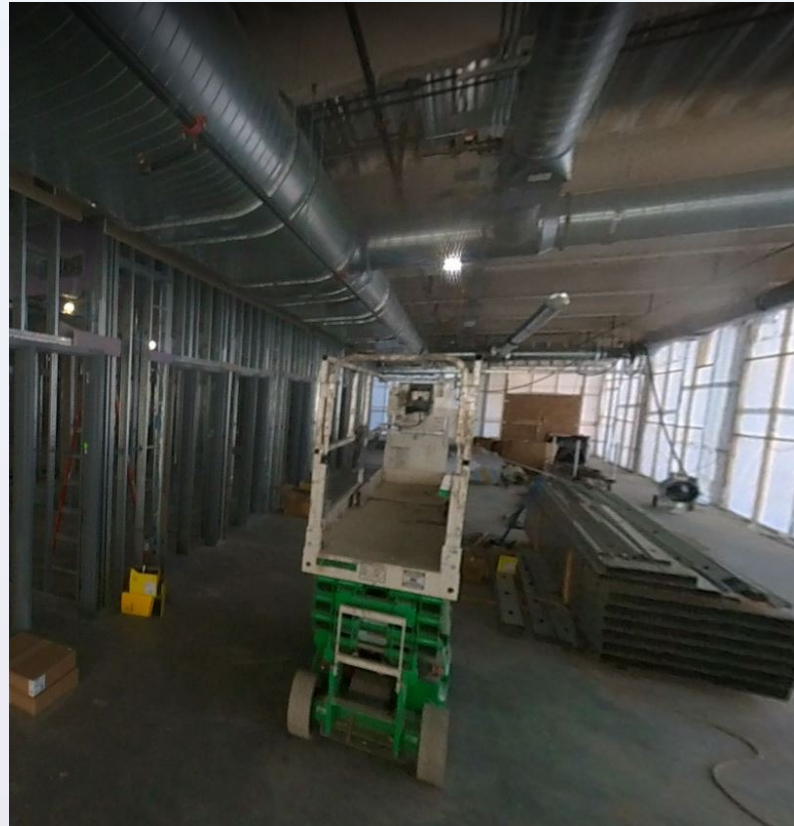


Mortar Mixer

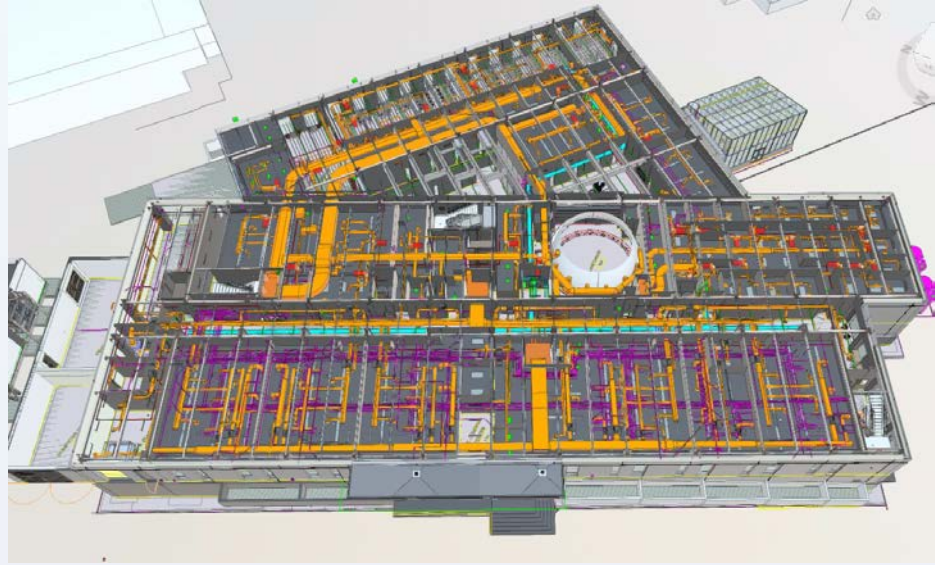
Ongoing Work – Metal Stud Framing



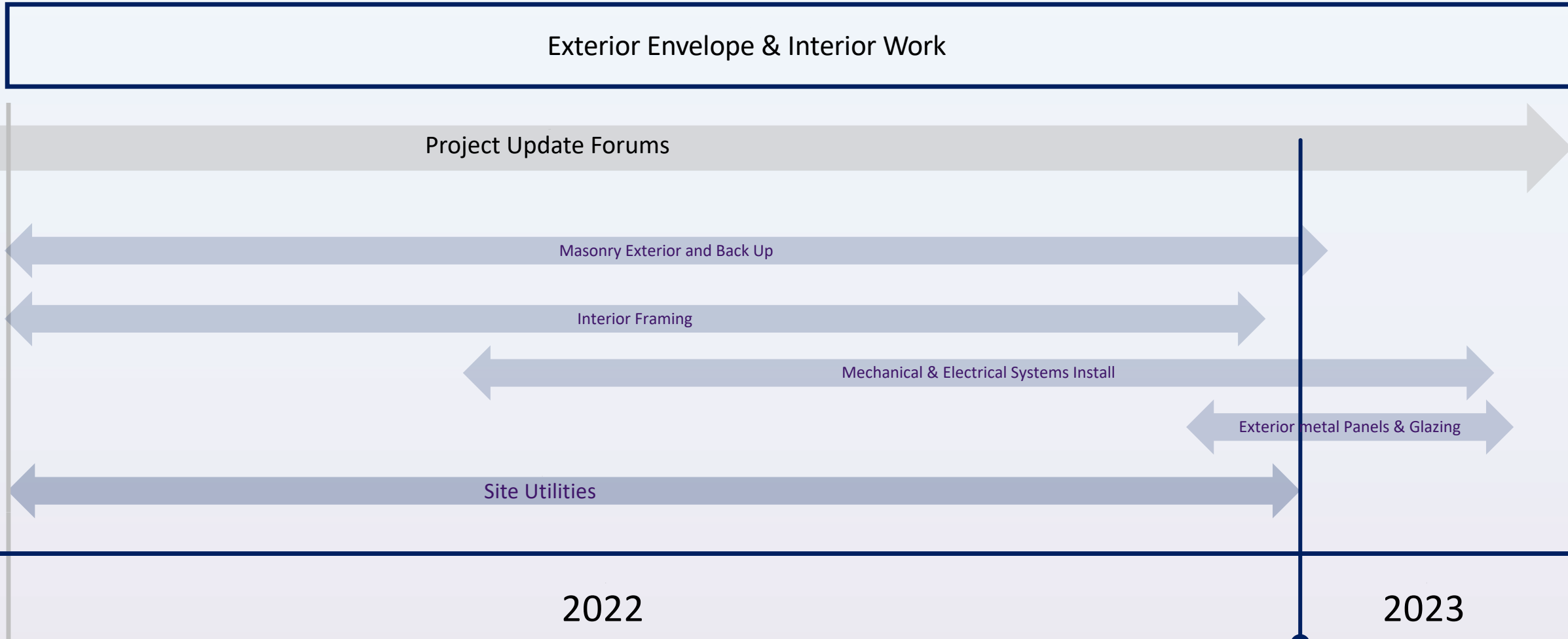
Ongoing Work – Metal Stud Framing



Ongoing Work – Mechanical Initial Phase



Construction Look Ahead



Upcoming Work

Exterior Envelope and Interior Rough Ins

- Masonry – Finish Brick
- Exterior Metal Panels
- Glazing
- New Entrance onto Takoma Ave

Interior

- Framing / Drywall
- Electrical / Mechanical Installations





Logistics

Current Delivery Situation

- Typical deliveries (concrete, pick up truck, box trucks, trailers) all enter / exit at Fenton St. - **this will not change**



Current Delivery Situation

- Large Equipment Deliveries – Roof Insulation, Mechanical and Electrical Units



TYPICAL 60' LOW BOY TRAILER



LONG FLAT BED TRUCKS

Questions & Answers

LINK STRATEGIC PARTNERS

MC MONTGOMERY
COLLEGE

Library/Resource Center Renovation

Library/Resource Center Agenda

1. Directives

- Design and Construction

2. Site Logistics

3. Timeline

What is the Project?

Renovation of the Library in the Resource Center building, in order to:

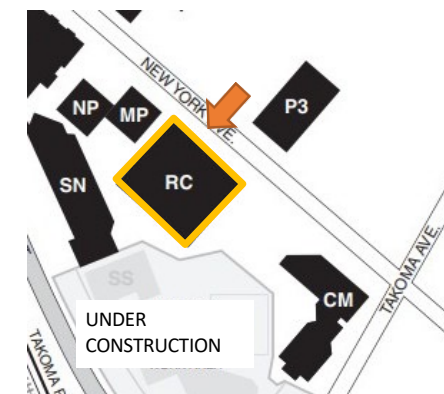
- Modernize the library
 - Better serve our students
 - Improve facilities for library staff
 - Enhance ADA compliance
 - Increase safety

Design Directives

- Retain the current size of the building, except for the enclosure of the existing main entryway and electrical corridor at the lower level.
- Maintain the height of the existing building.
- Main entryway will continue to be oriented towards the Math Pavilion. Minimize changes to the entryway that faces New York Avenue.
- Any changes to the building façade and the main entryway will respect the building's location in a residential historic neighborhood.
- Minimize windows to mitigate light spill.
- Comply with all City, County, and State construction and permitting requirements including tree protection and hazardous material removal.



New façade and windows

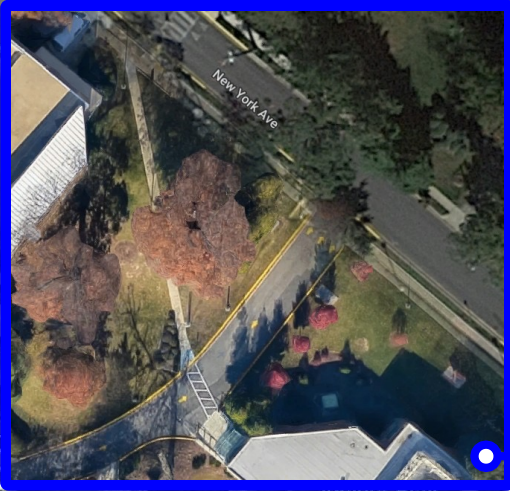
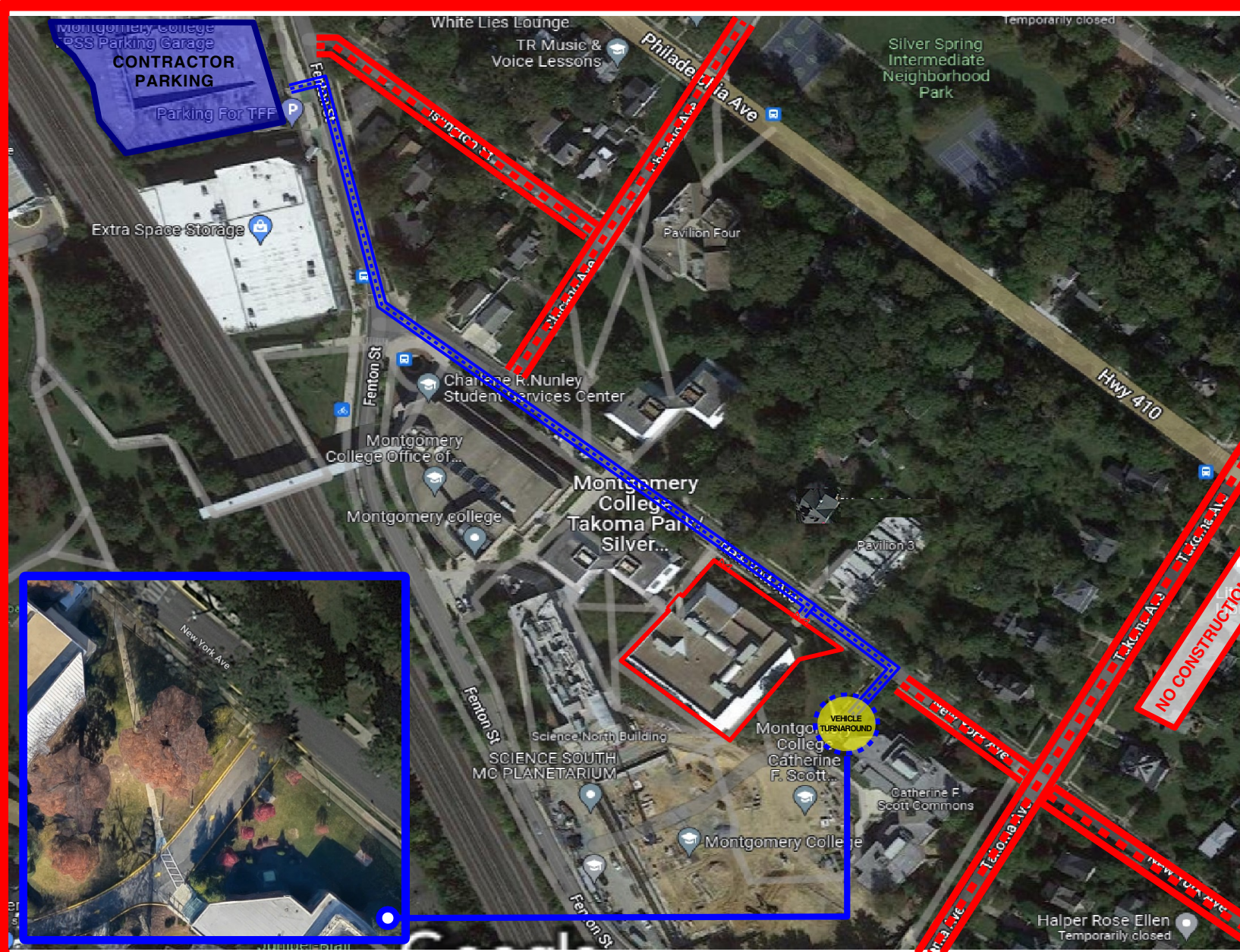


Construction Directives

- Adherence to the noise ordinance.
- To help with noise management, all exhaust systems on construction vehicles must be in good condition.
- Construction vehicles must not park on New York or Chicago Avenues or in the surrounding neighborhoods.
- Construction personnel may not park in the neighborhood, including metered parking spaces along Chicago Avenue.
- Temporary parking for delivery vehicles may only take place in the designated cutout on New York Avenue adjacent to the Nunley Student Services Building across from Pavilions 1 and 2 or on campus property, off New York Avenue.

Construction Directives, cont.

- Coordinate with the City and County regarding any temporary road closures, and provide at least a week's notice to the community.
- Implement a construction traffic plan to manage the impact of vehicle traffic on Chicago and New York Avenues. Project vehicles traversing New York Avenue may not proceed southeast bound beyond Academic Way. Construction vehicles will not be permitted on Takoma Avenue at any time.
- Comply with all City, County, and State construction and permitting requirements including tree protection, road closures, and hazardous material removal.



MC
MONTGOMERY
COLLEGE



**SITE LOGISTICS PLAN -
 MAINTENANCE OF TRAFFIC**

UPDATED: 11/10/22

HOURS OF OPERATION: M-F, 7:00AM - 5:00PM

CONSTRUCTION TRAFFIC FLOW DOWN NEW YORK AVE

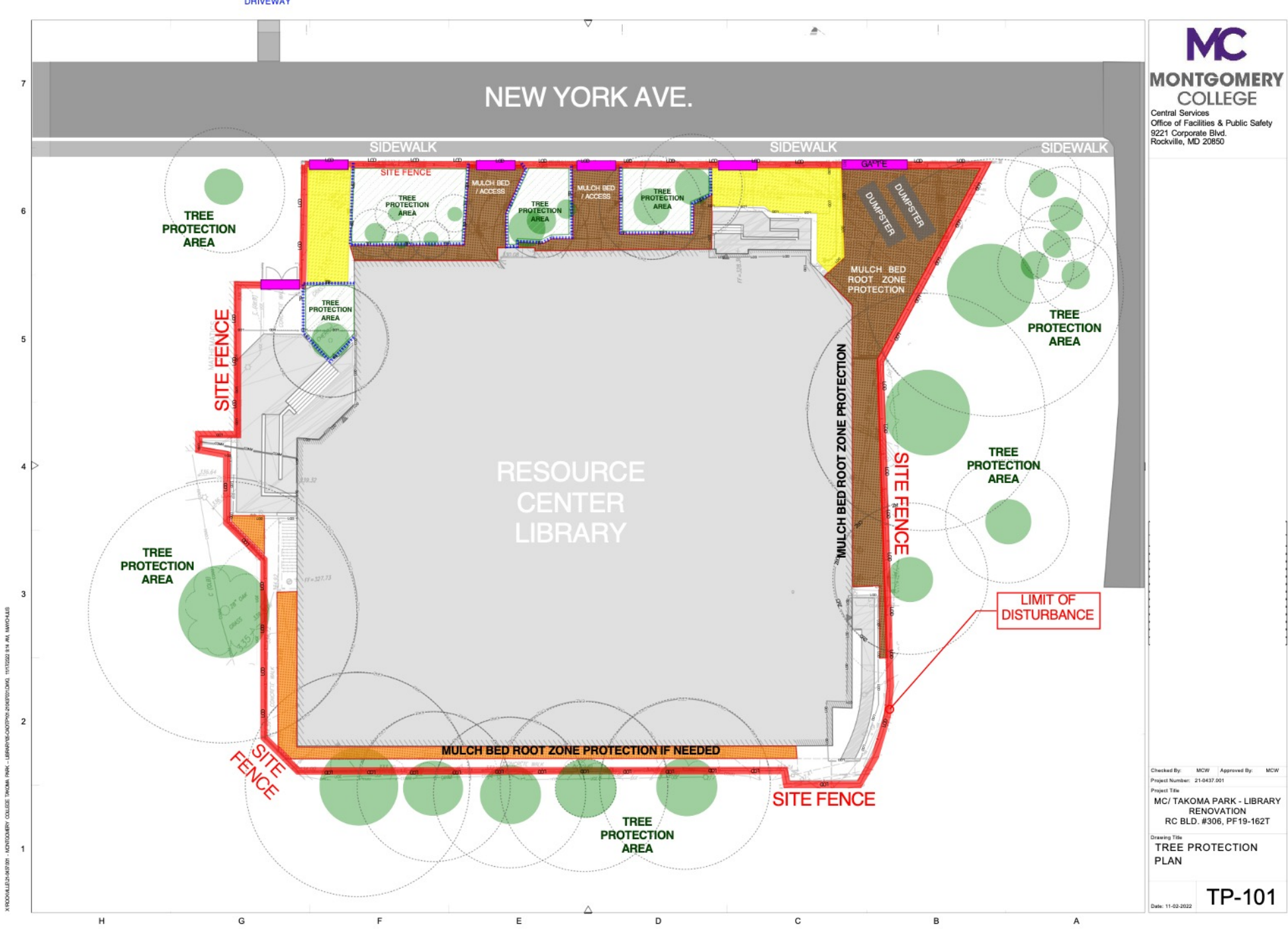
NO ACCESS ON TAKOMA AVE, NEW YORK AVE & ISLINGTON ST.

VEHICLE TURNAROUND

WAYFINDING SIGNAGE

FLAGMEN

GSLP-P1



MONTGOMERY COLLEGE

Central Services
Office of Facilities & Public Safety
9221 Corporate Blvd.
Rockville, MD 20850

Checked By: MCW Approved By: MCW
Project Number: 21-0437.001

Project Title
MC/ TAKOMA PARK - LIBRARY RENOVATION
RC BLD. #306, PF19-162T

Drawing Title
TREE PROTECTION PLAN

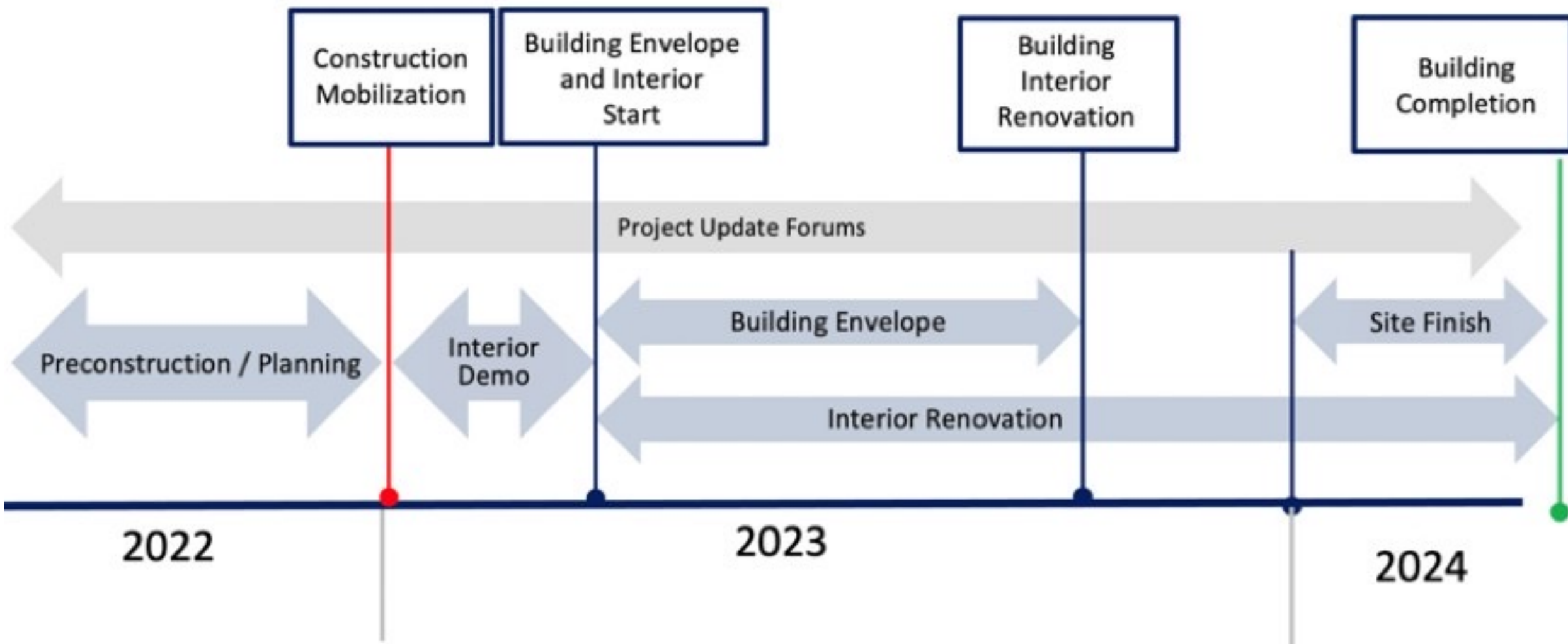
Date: 11-02-2022 **TP-101**

TREE PROTECTION FENCING & MULCH MAT PROTECTION



Construction Overview Timeline

Looking Ahead





ROLL OFF DUMPSTER TRUCK



FLAT BED TRUCK



CONSTRUCTION WORK VAN

Moving Logistics

- **Expected Timeline:** Furniture moves will take place the week of 12/19.
- **Library:** The library will be operating out of P1.
- **Hours:** Trucks will arrive daily at 8:00am for an 8am-5pm workday.
- **Storage:** Lower-level of Student Services is furniture storage area.

Questions & Answers

LINK STRATEGIC PARTNERS

MC MONTGOMERY
COLLEGE

Pavilions 1 and 2 HVAC Replacement

Updates

- **Interior Work:** Interior work will continue.
- **Exterior Work:** The concrete along Chicago Avenue will be repaired. The grassy area along Chicago Avenue will be restored. Storage containers will be removed. All these activities will involve trucks entering and parking on the site from Chicago Avenue. No traffic disruptions are expected.
- **Expected Timeline:** Expected completion 12/19.

Questions & Answers

LINK STRATEGIC PARTNERS

MC MONTGOMERY
COLLEGE

Website + Project Hotline

Project Hotline 800-879-9879

Sign-Up for Email Updates

Home

Updates

Leggett Building ▾

Library Renovation ▾

HVAC Replacement ▾



<https://mcblogs.montgomerycollege.edu/building-projects/>

Thank You!

LINK STRATEGIC PARTNERS

MC MONTGOMERY
COLLEGE