



# Montgomery College Construction Project Updates

Takoma Park / Silver Spring Campus

*September 13, 2022*

# Welcome and Introductions

**Michael Akin**

President, LINK Strategic Partners

**Dr. Brad Stewart**

Vice President and Provost, Takoma Park / Silver  
Spring Campus, Montgomery College

Catherine and Isiah Leggett Math and Science Building

**David Coleman**

Project Director, Barton Malow

**Paul Grossman**

Senior Project Manager, Barton Malow

Library/Resource Center

**Mark Holmes, AIA, LEED AP**

Market Sector Leader, RRMM Architects

**Drew Overton**

Project Manager, Gilbane

**Matt Karle**

Director of Special Projects, Gilbane

# Meeting Agenda

## **1. Catherine and Isiah Leggett Math and Science Building**

- Project Progress and Updates
- Questions and Answers

## **2. Library/Resource Center Renovation**

- Project Updates
- Review Design and Construction Directives
- Questions and Answers

## **3. Pavilions 1 and 2 HVAC Replacement**

- Project Background and Updates
- Questions and Answers

# Catherine and Isiah Leggett Math and Science Building

# Leggett Building Updates Agenda

## 1. Current Construction Project Status

- COVID-19 Operating Procedures

## 2. Progress Update

## 3. Logistics

# Barton Malow COVID-19 Operational Procedures

We are committed to maintaining a healthy working atmosphere on site and will stay flexible to rapidly evolving guidelines.

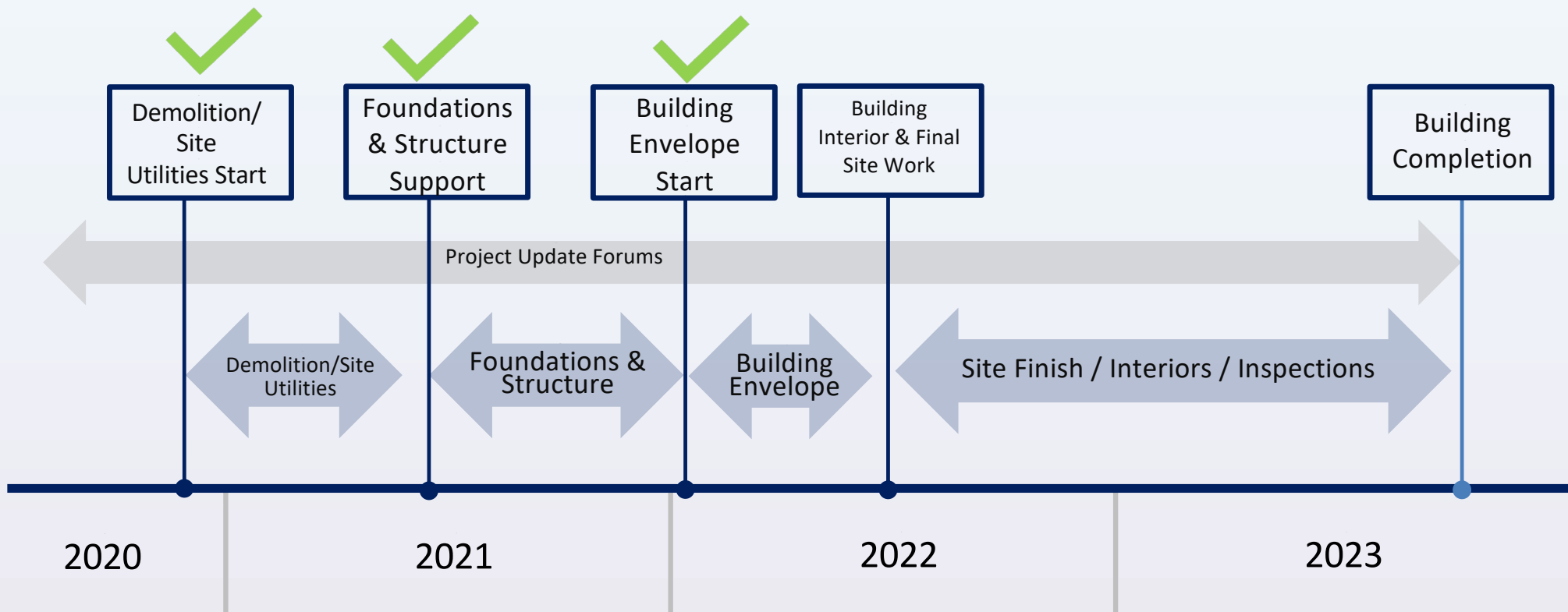
**Barton Malow's plan follows CDC & local guidelines.**

## Social Distancing Measures

- 6' separation at daily foreman meetings
- Smaller group safety orientation meetings held more often than usual
- All work surfaces (i.e.: tables, chairs) cleaned following the meeting
- Cleaning of portable toilets increase to 2x week – onsite staff provided with bleach and cleaners
- Face-to-Face meetings held to a minimum – video meetings encouraged
- Workers to maintain 6' separation whenever possible.
- No congregation for lunch (i.e. no lunchroom)
- Should a worker report illness, a site investigation will be completed
  - Current Guidelines:
    - A worker with a positive result will return to the site following most recent CDC Guidelines.
    - Contact tracing investigation – workers identified that require testing and possible quarantine

# Construction Overview Timeline

Looking Ahead



# Existing Conditions



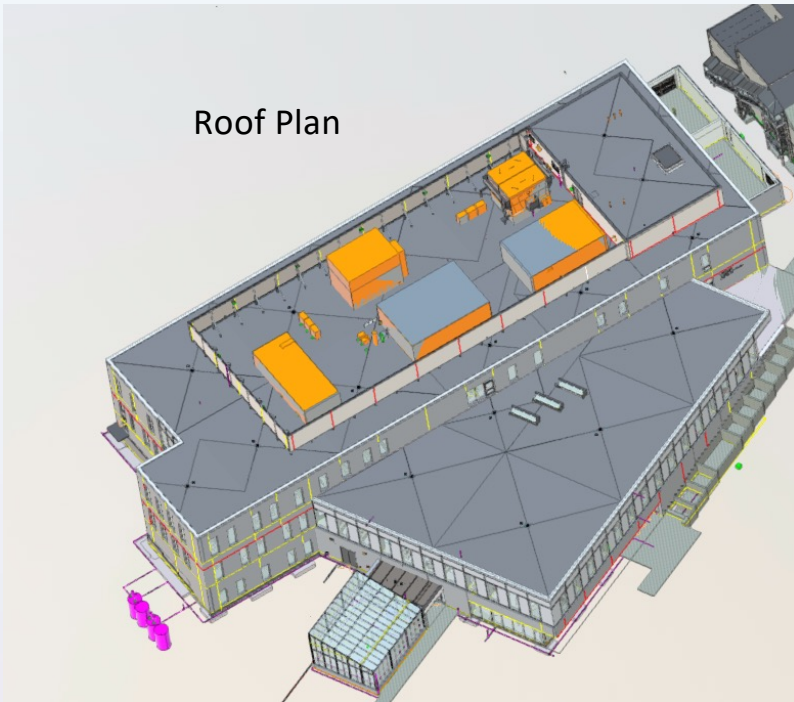


# Existing Conditions

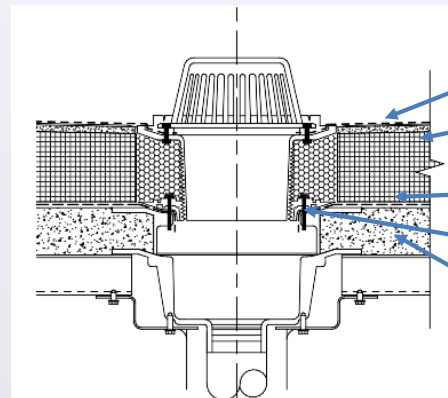


# Completed Work – Roofing

Roof Plan



- Components:
- Insulation
  - Membrane
  - Drains



- Roof
- Insulation
- Vapor Barrier
- Roof Drain
- Concrete Deck

# Ongoing Work – Enclosure

## What is “enclosure?”

- What everyone sees from the outside plus the required support/back-up
- Materials: metal studs, masonry/brick, roof, windows/glazing



STEP 1



STEP 2



STEP 3

# Ongoing Work – Enclosure

## Deliveries

- Block
- Brick
- Mortar
- Rebar

## Tools / Process

- Mortar Storage Silo
- Mortar Mixer
- Sawcutting
  - Masonry / Rebar
- Hand tools – End of the day cleaning of tools

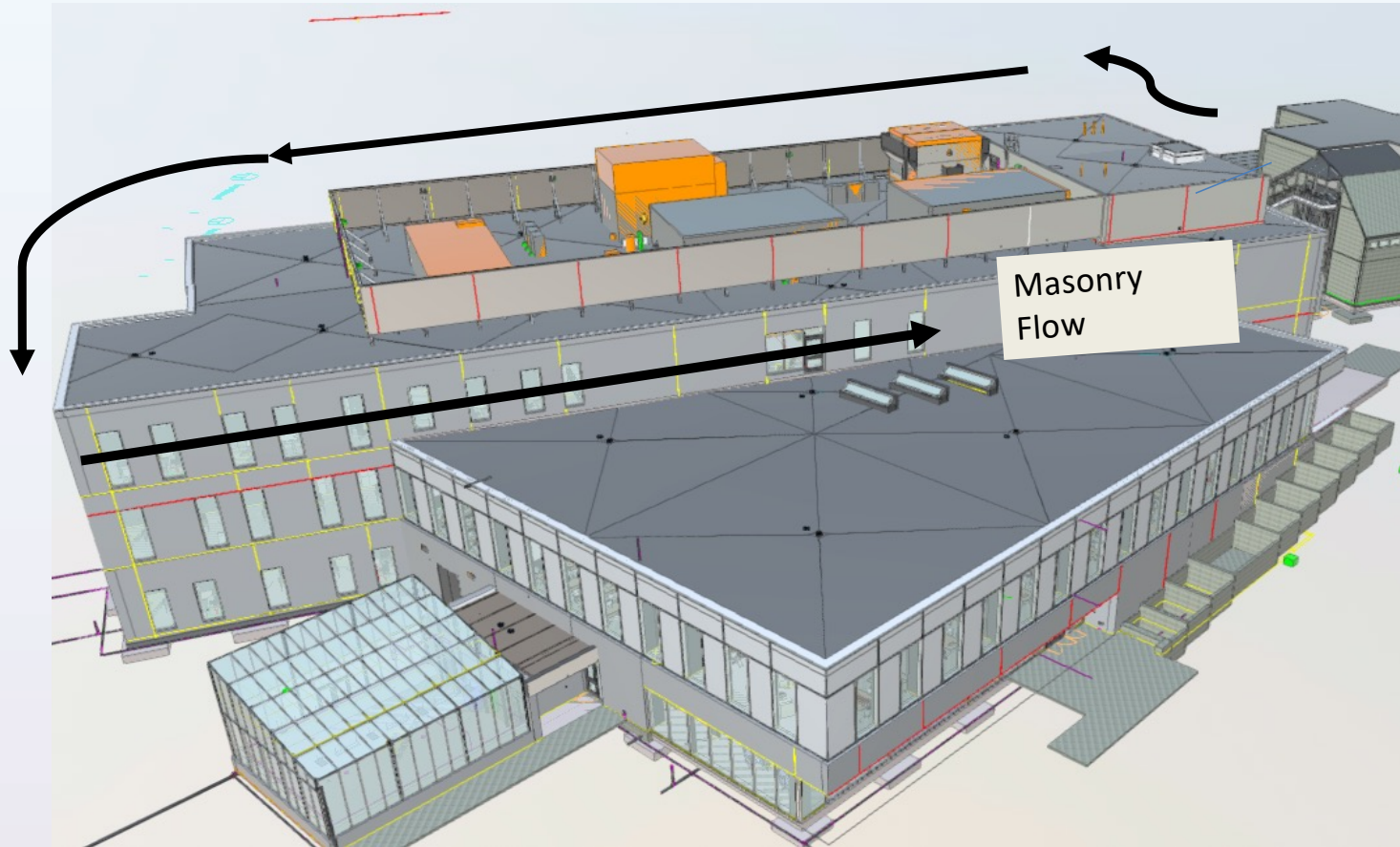


Mortar Storage  
Silo

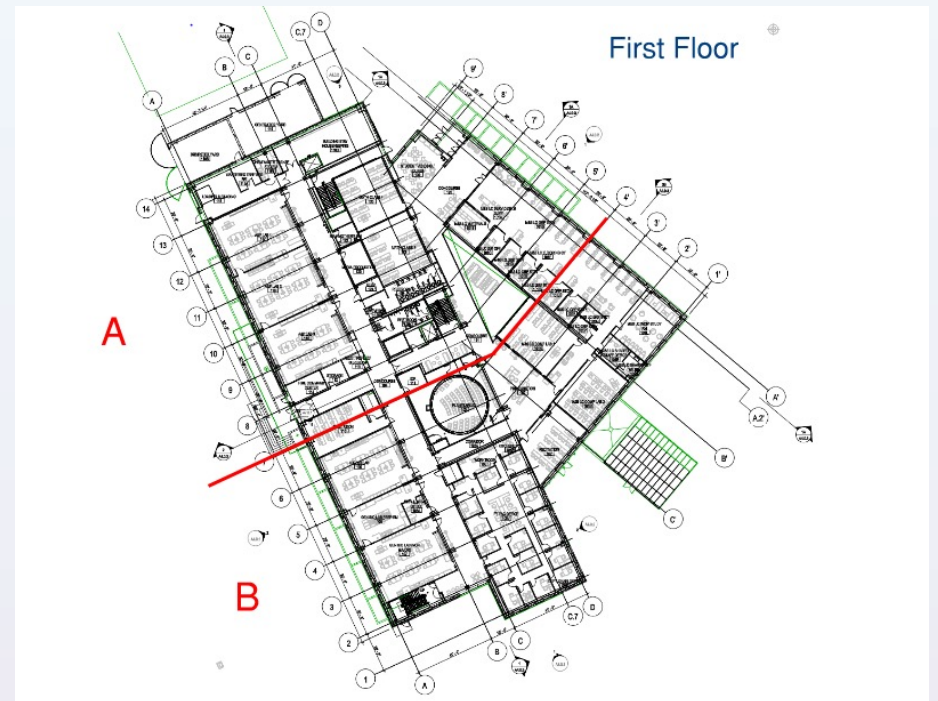


Mortar Mixer

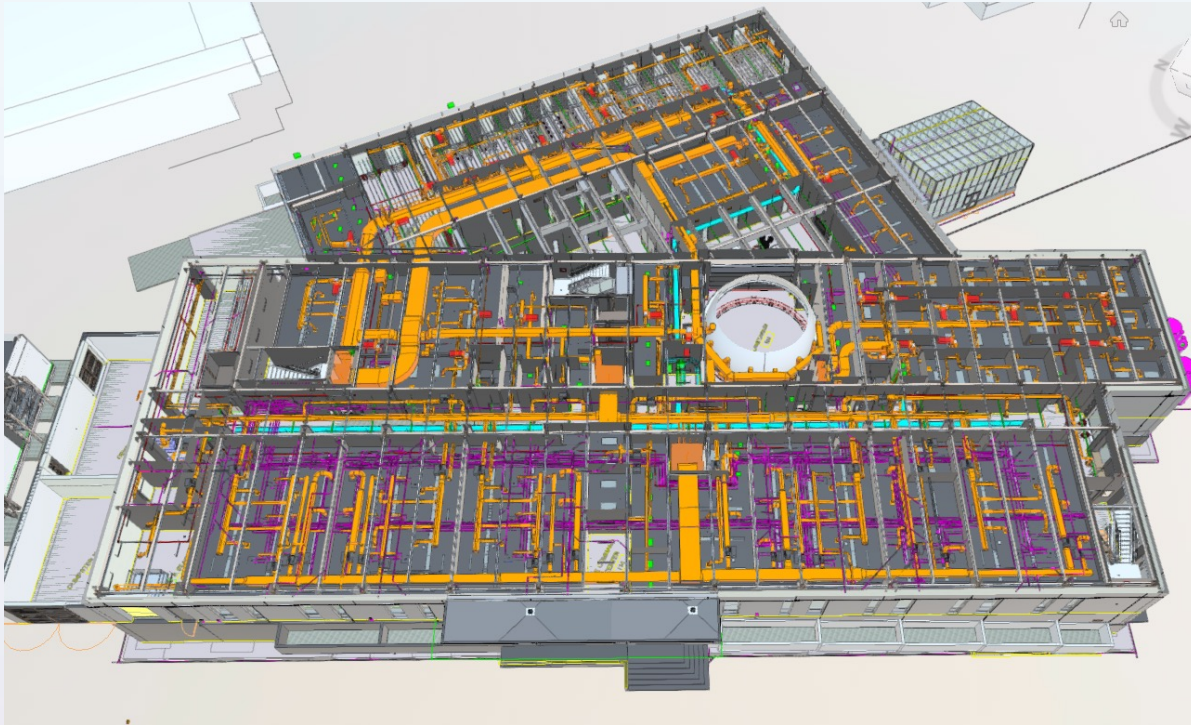
# Ongoing Work – Enclosure



# Ongoing Work – Metal Stud Framing



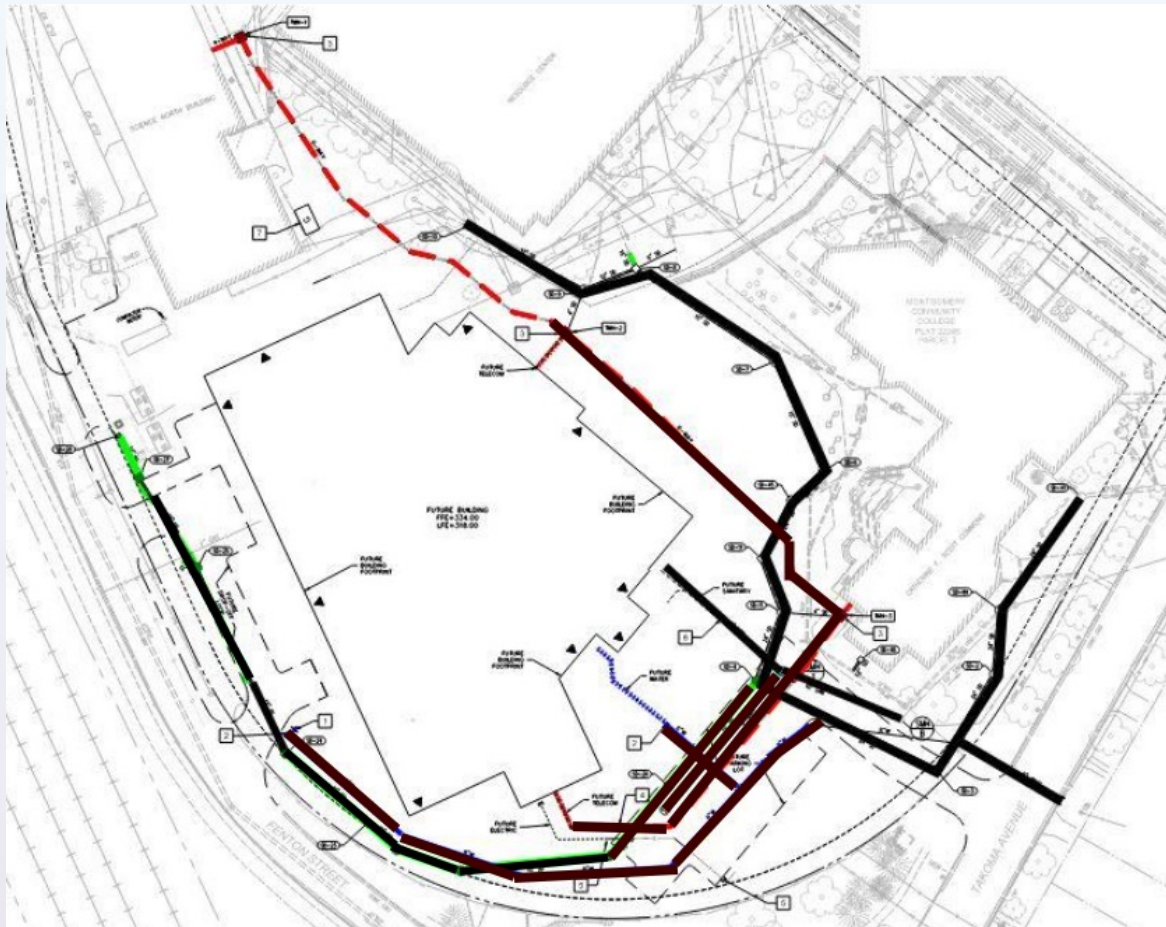
# Ongoing Work – Mechanical Initial Phase



## Components

- Plumbing/Heating and Air Conditioning Systems
  - Ductwork and Unit Placement on Roof
- Plumbing
- Electrical Systems
- Sprinkler

# Utility Installation - Progress



-  Storm Drain
-  Sanitary Sewer
-  Water
-  Telecom
-  Completed Work



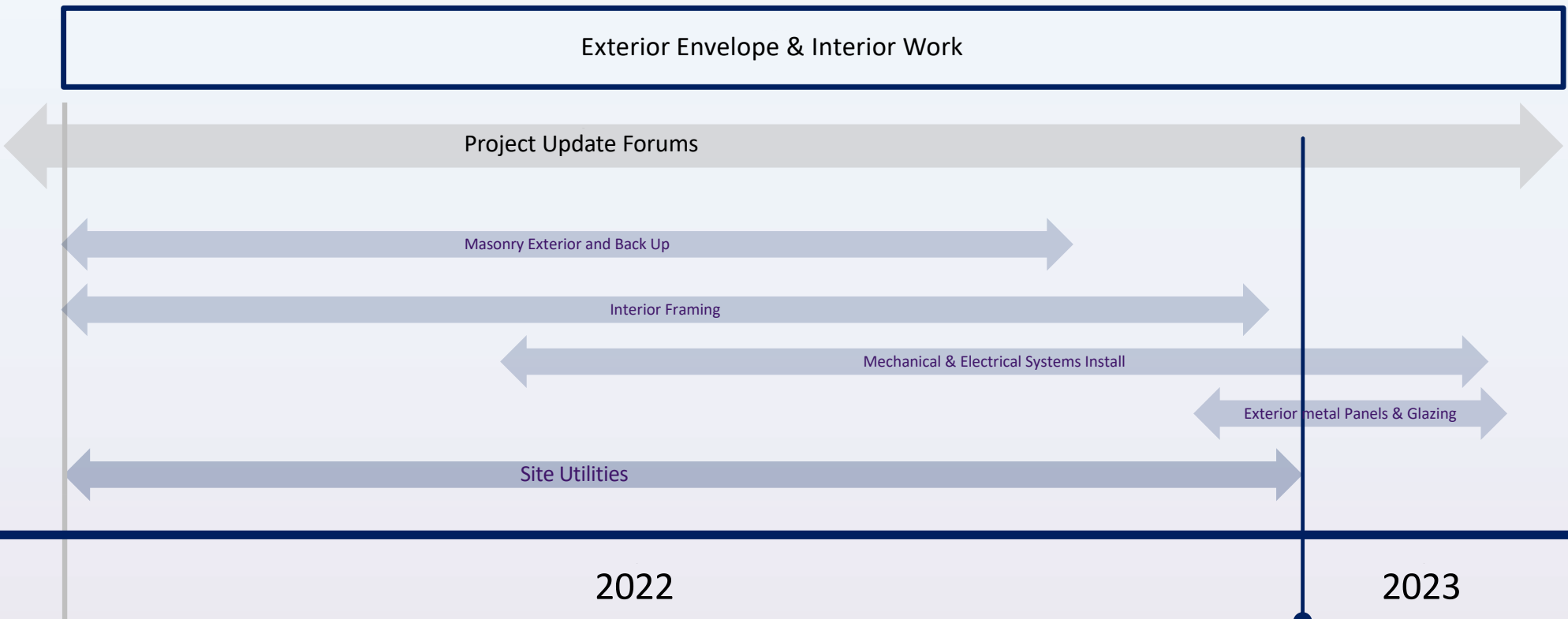
# Upcoming Work

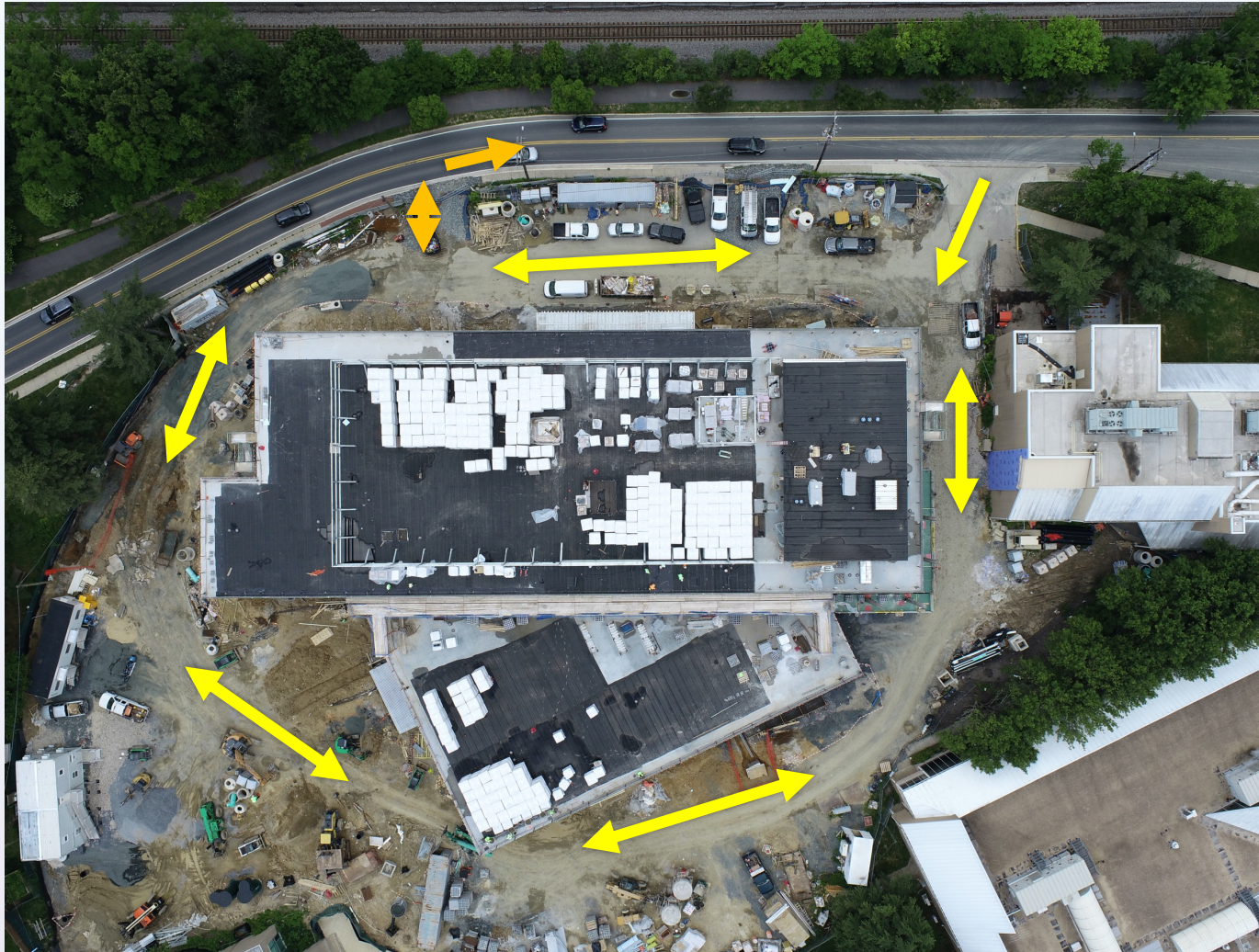
## Exterior Envelope and Interior Rough Ins

- Masonry – Finish Brick
- Exterior Metal Panels
- Glazing



# Construction Look Ahead





## Logistics

# Current Delivery Situation

- Typical deliveries (concrete, pick up truck, box trucks, trailers ) all enter / exit at Fenton St. - **this will not change**



# Current Delivery Situation

- Large Equipment Deliveries – Roof Insulation, Mechanical and Electrical Units



TYPICAL 60' LOW BOY TRAILER



LONG FLAT BED TRUCKS

# *Questions & Answers*

## *Leggett Building Project*

**LINK** STRATEGIC PARTNERS

**MC** MONTGOMERY  
COLLEGE

# Library/Resource Center Renovation

# What is the Project?

Renovation of the Library in the Resource Center building, in order to:

1. Modernize the library
  - Better serve our students
  - Improve facilities for library staff
  - Enhance ADA compliance
  - Increase safety

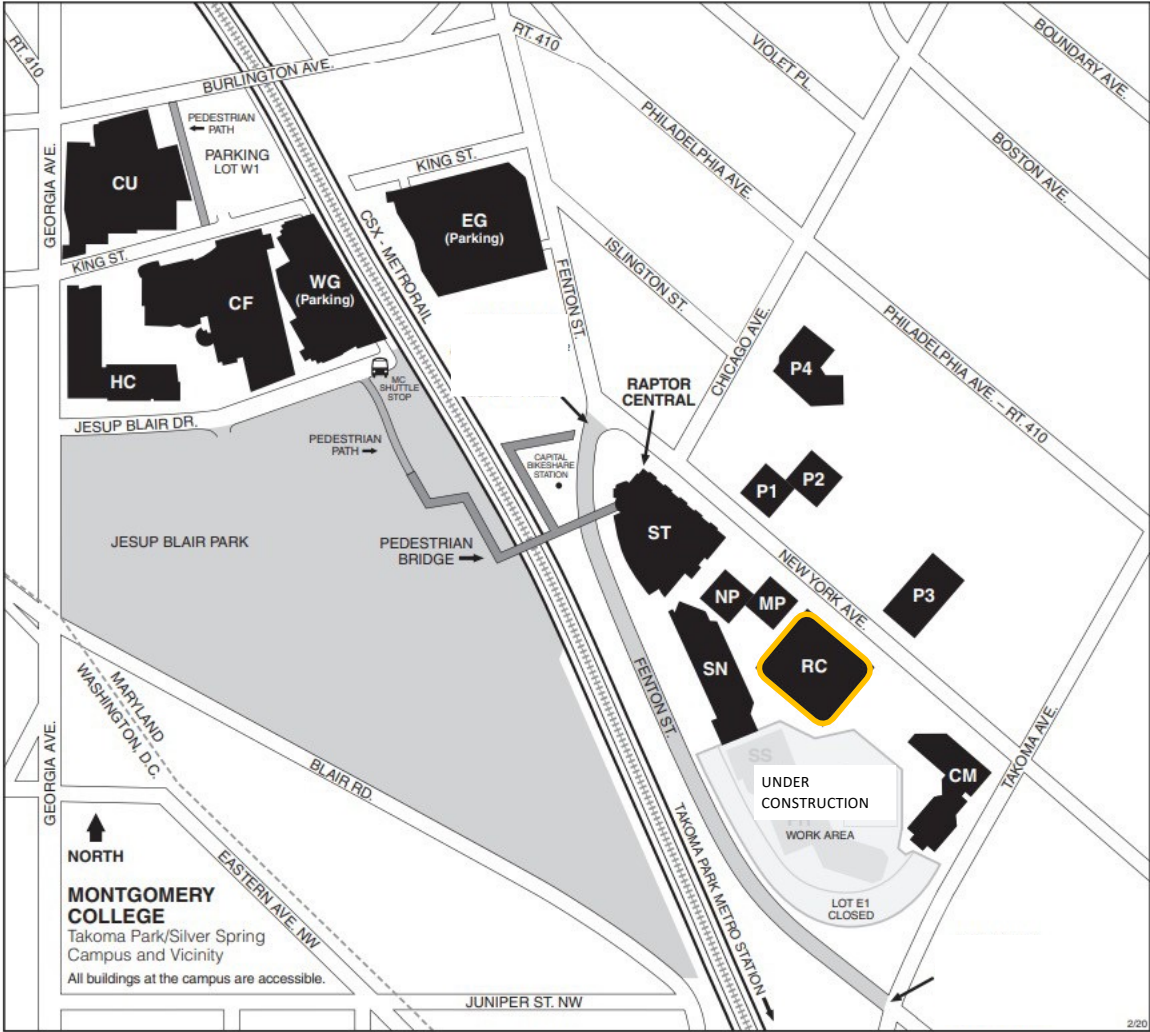


# Design Directives

- Retain the current size of the building, except for the enclosure of the existing main entryway.
- Maintain the height of the existing building.
- Main entryway will continue to be oriented towards the Math Pavilion. Minimize changes to the entryway that faces New York Avenue.
- Any changes to the building façade and the main entryway will respect the building's location in a residential historic neighborhood.
- Minimize windows to mitigate light spill.
- Comply with all City, County, and State construction and permitting requirements including tree protection and hazardous material removal.

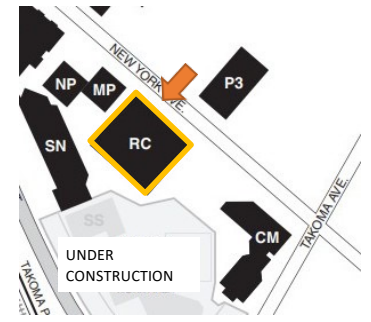
# MONTGOMERY COLLEGE

## Takoma Park/Silver Spring Campus and Vicinity



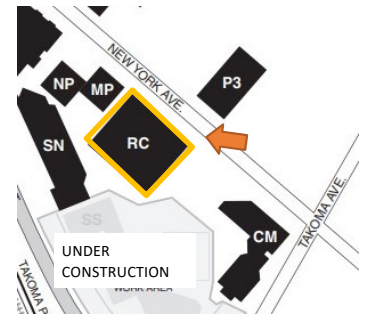


New façade and windows





New façade and windows



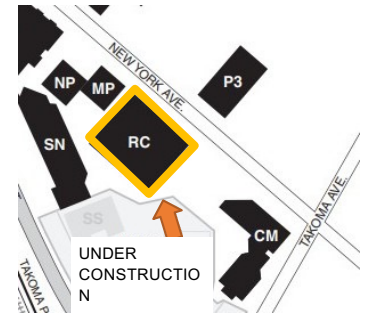


Existing



Proposed

## Enclosing of Lower Level



# Construction Directives

- Adherence to the noise ordinance.
- To help with noise management, all exhaust systems on construction vehicles must be in good condition.
- Construction vehicles must not park on New York or Chicago Avenues or in the surrounding neighborhoods.
- Construction personnel may not park in the neighborhood, including metered parking spaces along Chicago Avenue and Takoma Avenue.
- Temporary parking for delivery vehicles may only take place in the designated cutout on New York Avenue adjacent to the Nunley Student Services Building across from Pavilions 1 and 2 or on campus property, off New York Avenue.

# Construction Directives, cont.

- Coordinate with the City and County regarding any temporary road closures and provide at least a week's notice to the community.
- Implement a construction traffic plan to manage the impact of vehicle traffic on Fenton Street and New York Avenue. Project vehicles traversing New York Avenue may not proceed southeast bound beyond Academic Way. Construction vehicles will not be permitted on Chicago and Takoma Avenues at any time.
- Comply with all City, County, and State construction and permitting requirements including tree protection, road closures, hazardous material removal, and noise ordinances.

## Gilbane Building Company – About Us:



- Privately Held and Family Owned for 150+ Years
- Local Baltimore and DC Offices
- Experienced in Educational Facilities and Public Libraries



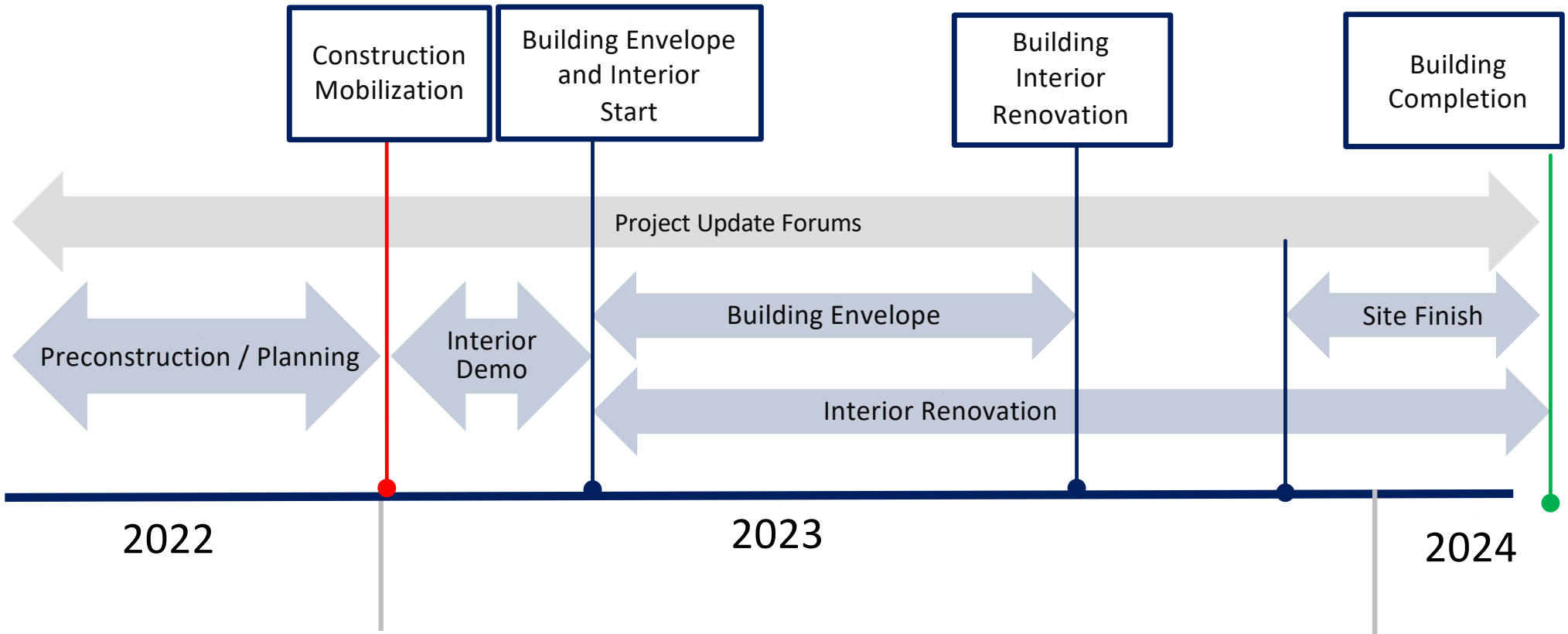
# Working in Historic Neighborhoods



- Experienced Working in Historic Neighborhoods and Districts
- Current Project: Museum Construction in historic St. Michaels, MD
- Will operate in full compliance of Construction Directives

# Construction Overview Timeline

## Looking Ahead



# *Questions & Answers*

## *Library/Resource Center Renovation*

**LINK** STRATEGIC PARTNERS

**MC** MONTGOMERY  
COLLEGE

# **Rooftop HVAC Unit Replacements on Pavilions 1 & 2**

# P1/P2 Updates

## **Work Completed:**

- HVAC units installed
- Pipe installation complete
- Topsoil replaced

## **Next Steps:**

- Rooftop restoration
- Continued Interior work
- Repair campus sidewalk

# *Questions & Answers*

## *Pavilions 1 and 2 HVAC Replacement*

**LINK** STRATEGIC PARTNERS

**MC** MONTGOMERY  
COLLEGE

# Weekly Projects Update Emails



Montgomery College | Takoma Park/Silver Spring Campus Building Projects

Project Activities Notification | August 26, 2022

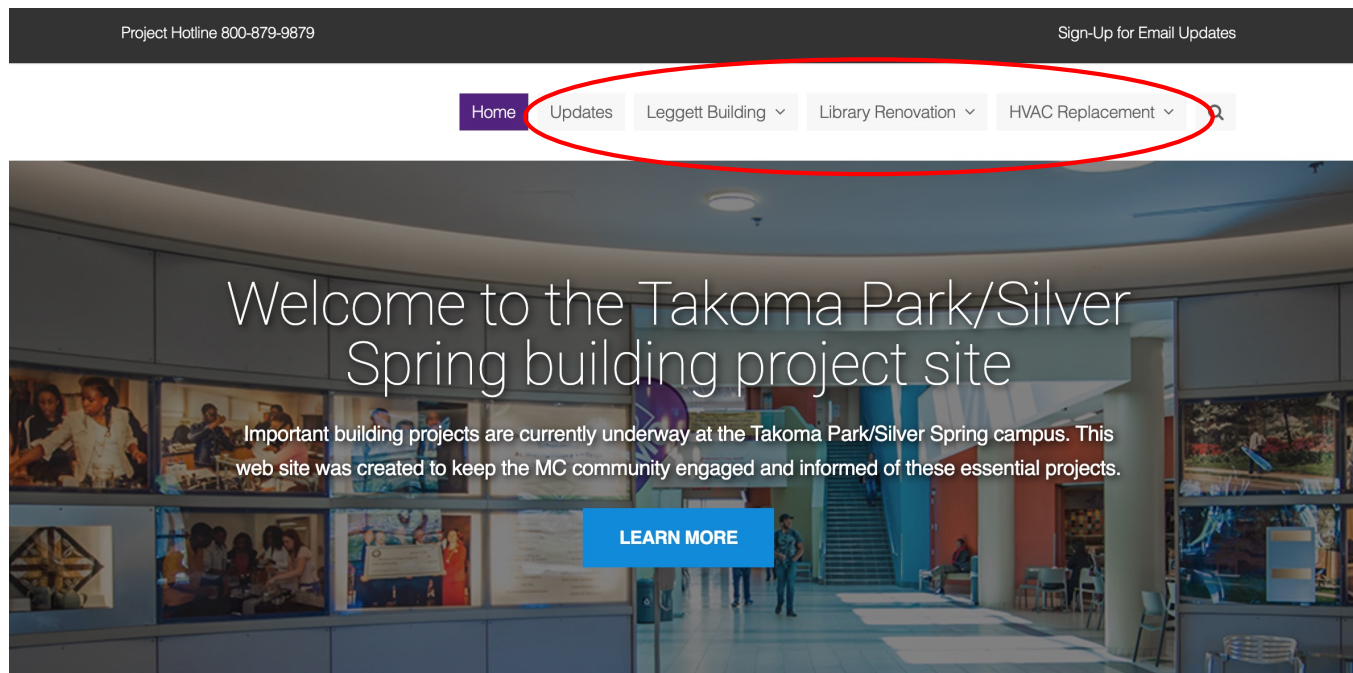
Dear Neighbors,

Thank you for your interest in the Takoma Park/Silver Spring Campus construction projects. We strive to keep our neighbors informed about significant construction events with this weekly email notification.

This notice will continue to provide information on the construction of the Catherine and Isiah Leggett Building construction and will now include updates regarding the HVAC rooftop replacement on Pavilions 1 and 2 (P1 and P2) and the campus library renovation in the Resource Center.



# Website + Project Hotline



**Hotline number:  
800-879-9879**

New URL: <https://mcblogs.montgomerycollege.edu/building-projects/>



***Thank You!***

**LINK** STRATEGIC PARTNERS

**MC** MONTGOMERY  
COLLEGE