



The Next Phase of the Catherine and Isiah Leggett Math and Science Building

Takoma Park / Silver Spring Campus

May 24, 2022

Welcome Remarks

Mr. Michael Akin

President

LINK Strategic Partners

Dr. Brad Stewart

Vice President and Provost, Takoma Park / Silver Spring Campus

Montgomery College

Meeting Agenda

- 1. Current Construction Project Status**
 - COVID-19 Operating Procedures
- 2. Progress Update**
- 3. Logistics**

Barton Malow COVID-19 Operational Procedures

We are committed to maintaining a healthy working atmosphere on site and will stay flexible to rapidly evolving guidelines.

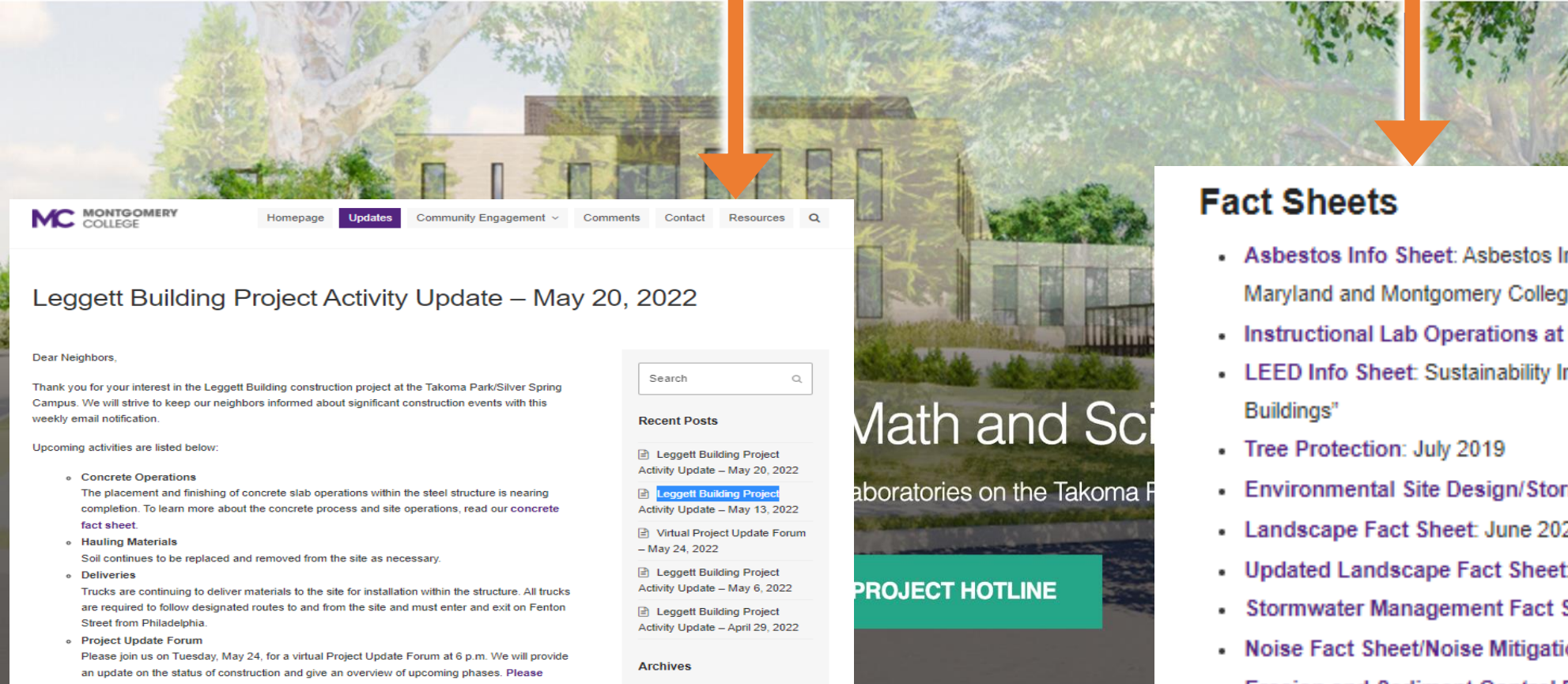
Barton Malow's plan follows CDC & local guidelines.

Social Distancing Measures

- 6' separation at daily foreman meetings
- Smaller group safety orientation meetings held more often than usual
- All work surfaces (i.e.: tables, chairs) cleaned following the meeting
- Cleaning of portable toilets increase to 2x week – on site staff provided with bleach and cleaners
- Face-to-Face meetings held to a minimum – video meetings encouraged
- Workers to maintain 6' separation whenever possible.
- No congregation for lunch (i.e. no lunchroom)
- Should a worker report illness, a site investigation will be completed
 - Current Guidelines:
 - A worker with a positive result will return to the site following most recent CDC Guidelines.
 - Contact tracing investigation – workers identified that require testing and possible quarantine



Progress Update



MC MONTGOMERY COLLEGE

Homepage **Updates** Community Engagement ▾ Comments Contact Resources 🔍

Leggett Building Project Activity Update – May 20, 2022

Dear Neighbors,

Thank you for your interest in the Leggett Building construction project at the Takoma Park/Silver Spring Campus. We will strive to keep our neighbors informed about significant construction events with this weekly email notification.

Upcoming activities are listed below:

- **Concrete Operations**
The placement and finishing of concrete slab operations within the steel structure is nearing completion. To learn more about the concrete process and site operations, read our [concrete fact sheet](#).
- **Hauling Materials**
Soil continues to be replaced and removed from the site as necessary.
- **Deliveries**
Trucks are continuing to deliver materials to the site for installation within the structure. All trucks are required to follow designated routes to and from the site and must enter and exit on Fenton Street from Philadelphia.
- **Project Update Forum**
Please join us on Tuesday, May 24, for a virtual Project Update Forum at 6 p.m. We will provide an update on the status of construction and give an overview of upcoming phases. [Please register here.](#)

Please visit the project's website at montgomerycollege.edu/tpss-design for additional information. You may contact us with questions at community@montgomerycollege.edu or call the project hotline at 800-879-9879.

Thank you,
The Montgomery College Team

Share This

[Tweet](#) [Share](#) [in](#) [Email](#)

Search 🔍

Recent Posts

- Leggett Building Project Activity Update – May 20, 2022
- [Leggett Building Project Activity Update – May 13, 2022](#)
- Virtual Project Update Forum – May 24, 2022
- Leggett Building Project Activity Update – May 6, 2022
- Leggett Building Project Activity Update – April 29, 2022

Archives

Select Month ▾

Categories

- Design Charrettes
- Project Update Forums
- Updates

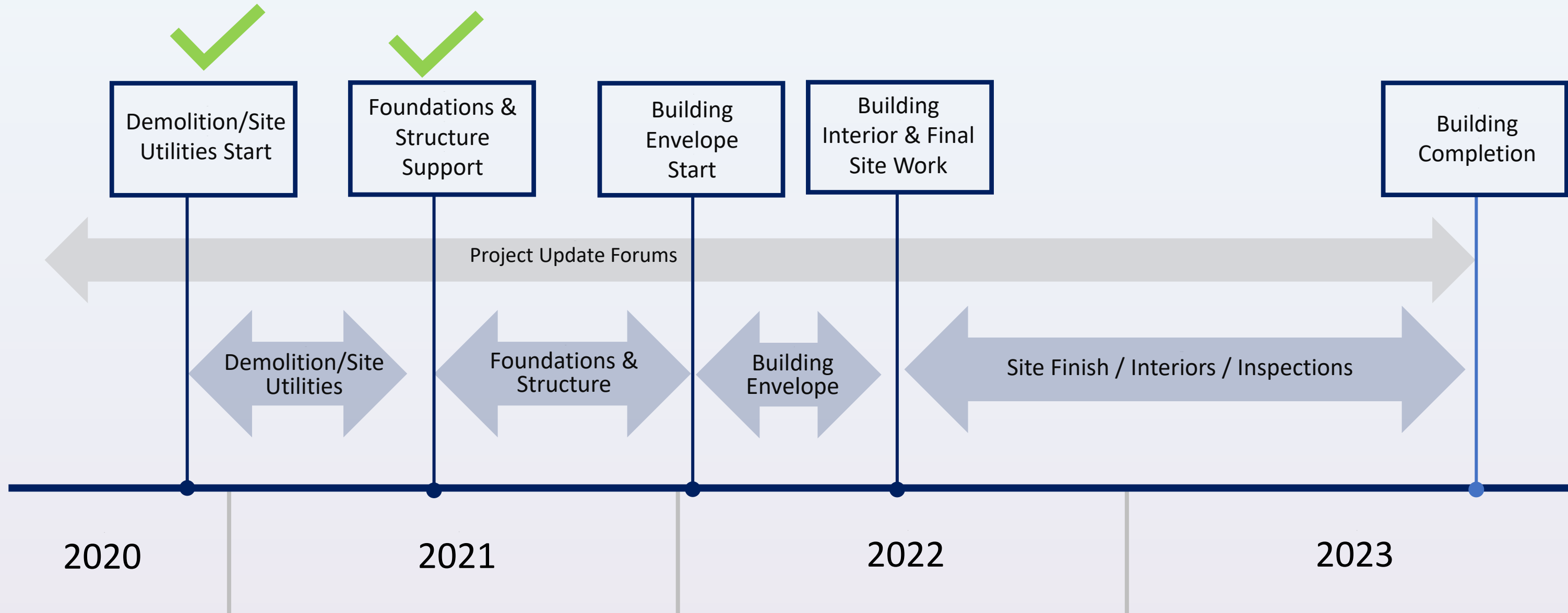
Fact Sheets

- [Asbestos Info Sheet: Asbestos Information from the State of Maryland and Montgomery College](#)
- [Instructional Lab Operations at Montgomery College](#)
- [LEED Info Sheet: Sustainability Information: LEED Is "Green Buildings"](#)
- [Tree Protection: July 2019](#)
- [Environmental Site Design/Stormwater Management: July 2019](#)
- [Landscape Fact Sheet: June 2020](#)
- [Updated Landscape Fact Sheet: August 2020](#)
- [Stormwater Management Fact Sheet](#)
- [Noise Fact Sheet/Noise Mitigation Plan: November 2020](#)
- [Erosion and Sediment Control Fact Sheet: November, 2021](#)
- [Concrete Fact Sheet: February, 2022](#)

- Weekly updates on the website every Friday
- **Note:** Significant changes occurring between updates will have an additional post

Construction Overview Timeline

Looking Ahead



Existing Conditions



Existing Conditions



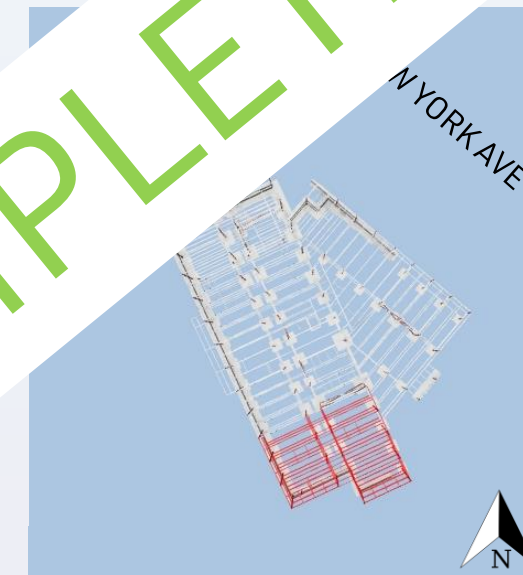
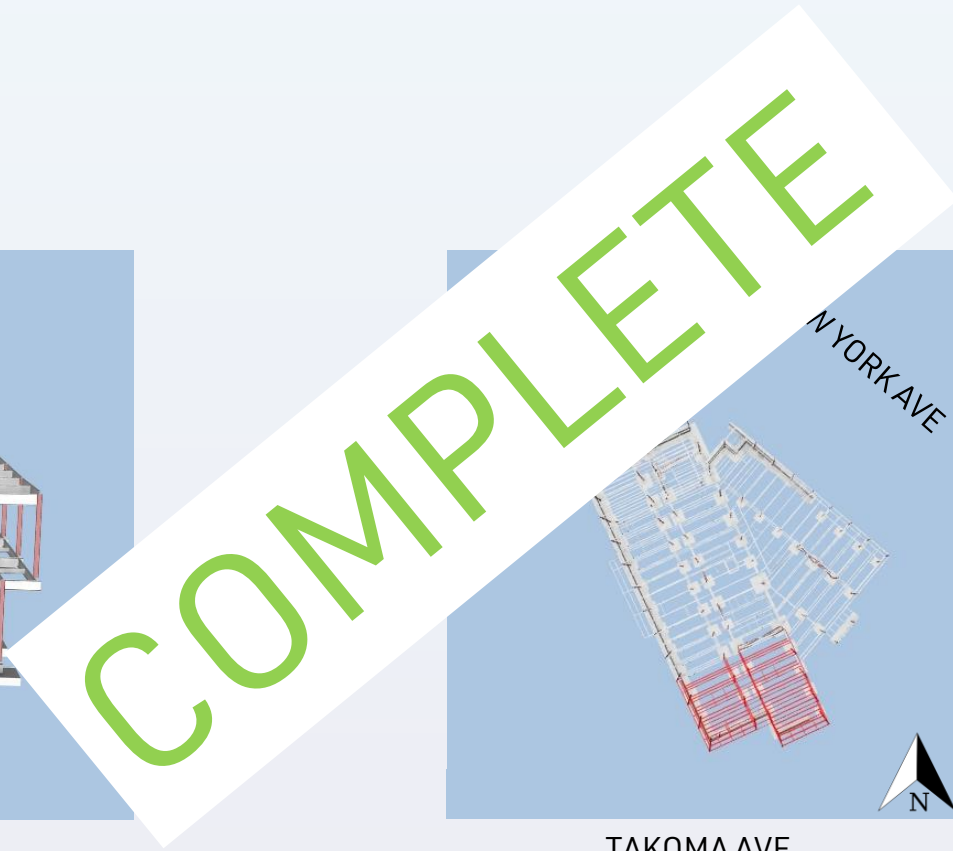
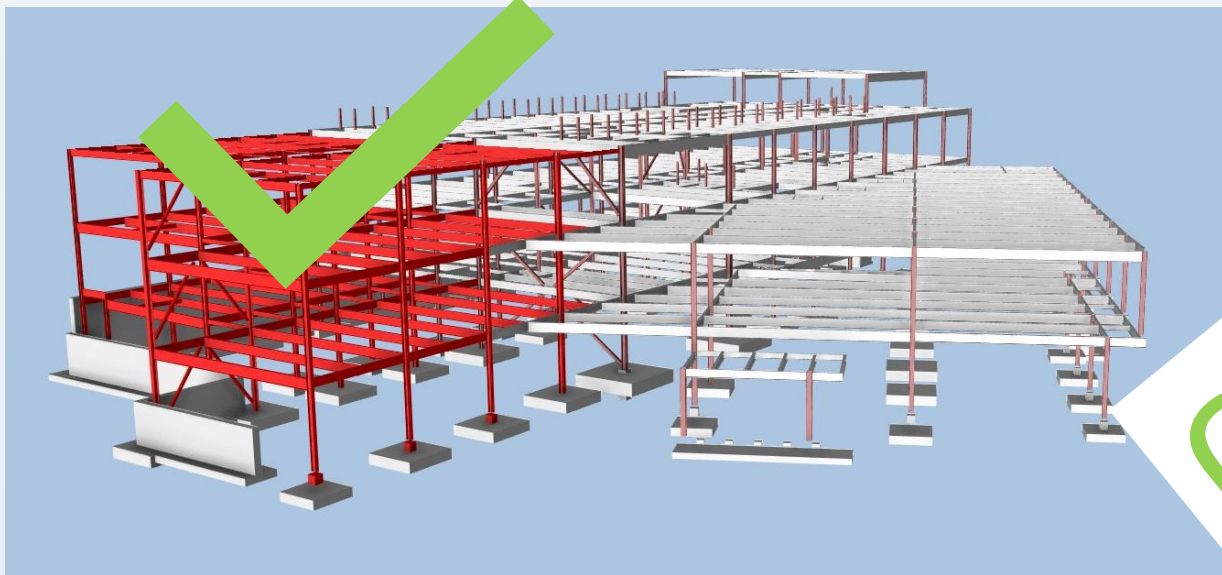
Foundation & Structure Support



- Concrete foundations and walls complete
- Steel erection completion late February

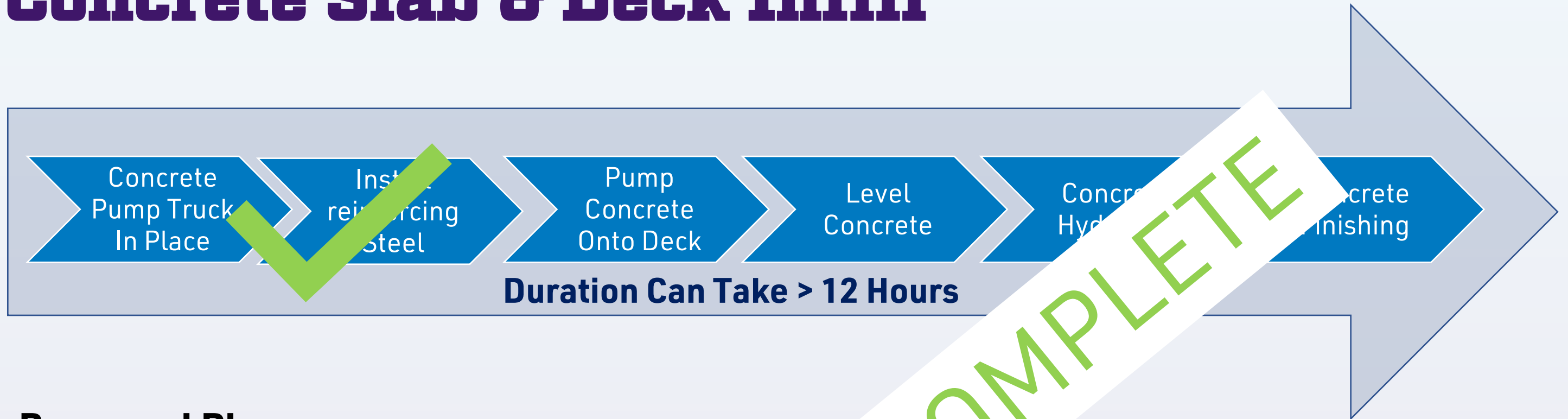
Ongoing Work – Steel Erection

Steel Erection Phase 5



TAKOMA AVE

Upcoming Work - Concrete Slab & Deck Infill



Proposed Plan

- Pump truck arrives at 6 AM for set up
- Concrete trucks arrive at 7 AM
- Blankets placed to mitigate any noise / light

Upcoming Work

Exterior Envelope and Interior Rough Ins

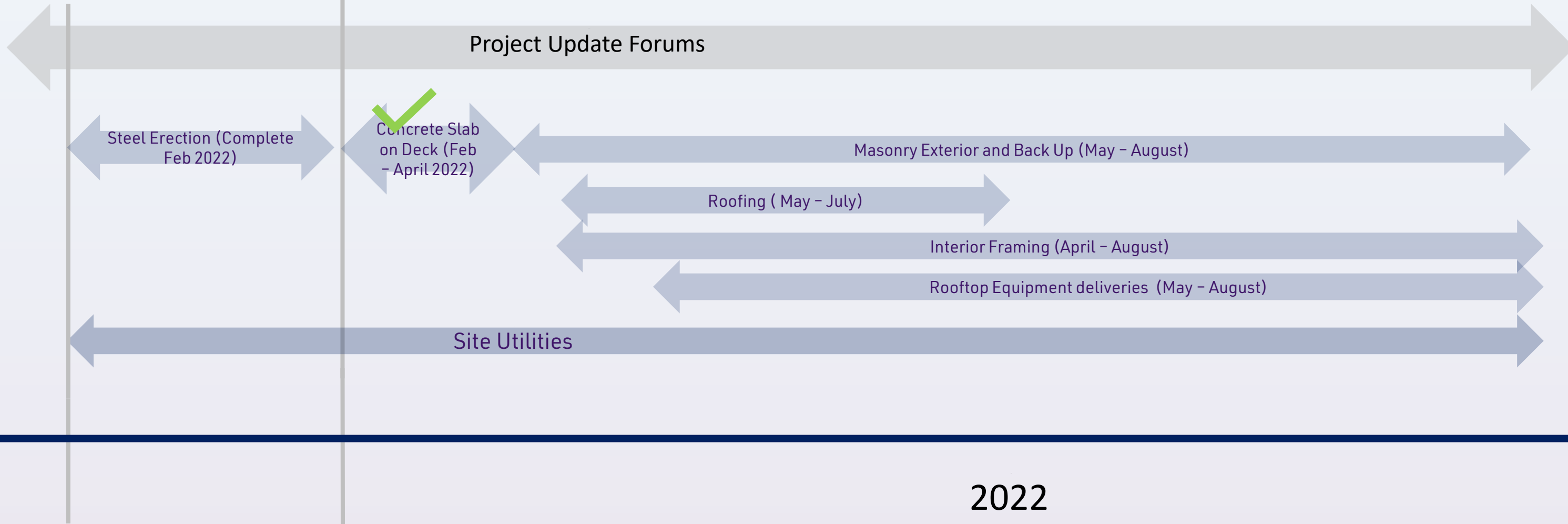
- Masonry
- Interior Framing
 - Metal Studs
- Mechanical Initial Work
- Roofing Installation
- Site Utilities



Construction Look Ahead



<p>Structure Dec 2021 - March 2022</p>	<p>Exterior Envelope & Interior Work April 2022 – Aug 2022</p>
--	--



Upcoming Work – Enclosure

What is "enclosure?"

- What everyone sees from the outside plus the required support/back-up
- Materials: metal studs, masonry/brick, roof, windows/glazing



STEP 1



STEP 2



STEP 3

Upcoming Work – Enclosure

Deliveries

- Block
- Brick
- Mortar
- Rebar

Tools / Process

- Mortar Storage Silo
- Mortar Mixer
- Sawcutting
 - Masonry / Rebar
- Hand tools – End of the day cleaning of tools

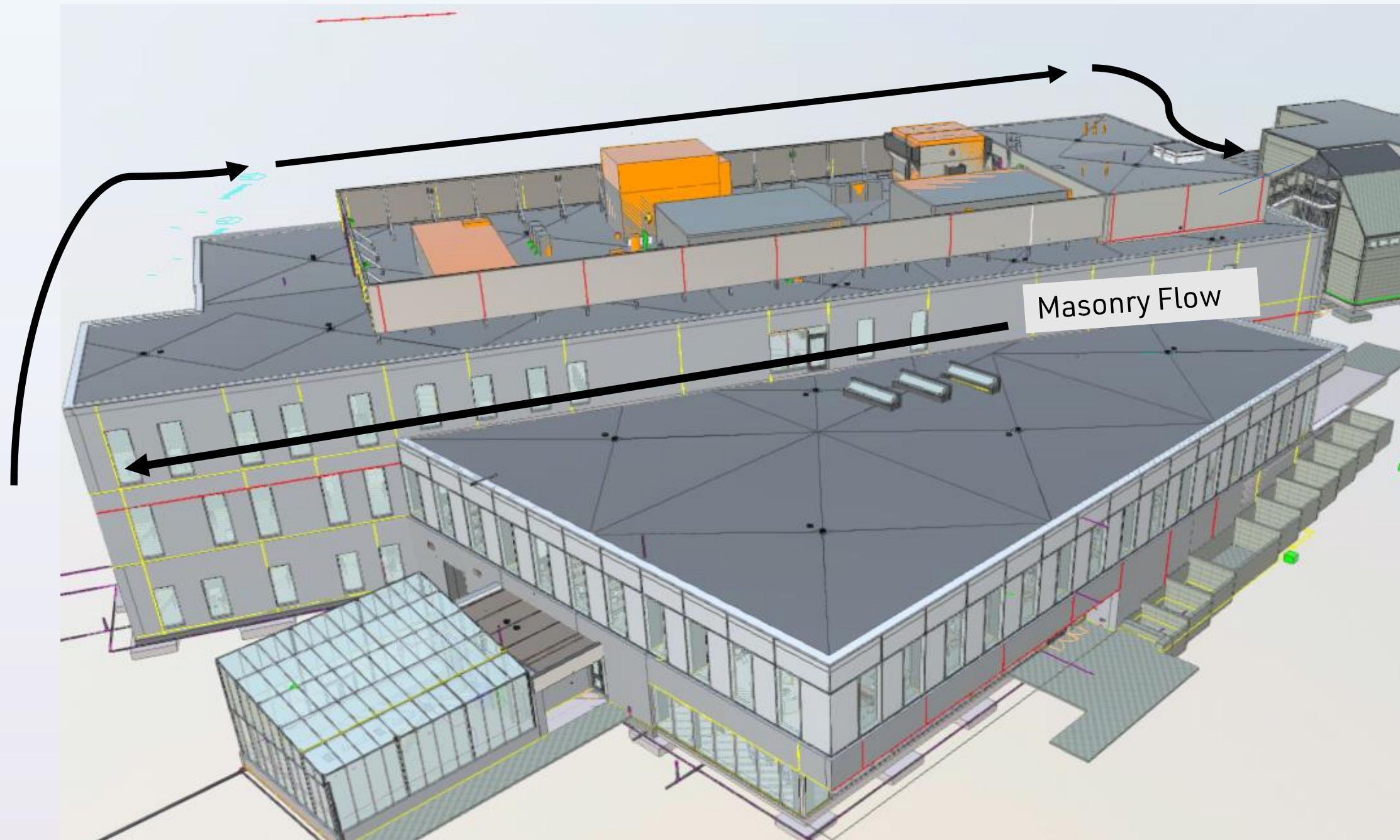


Mortar Storage Silo



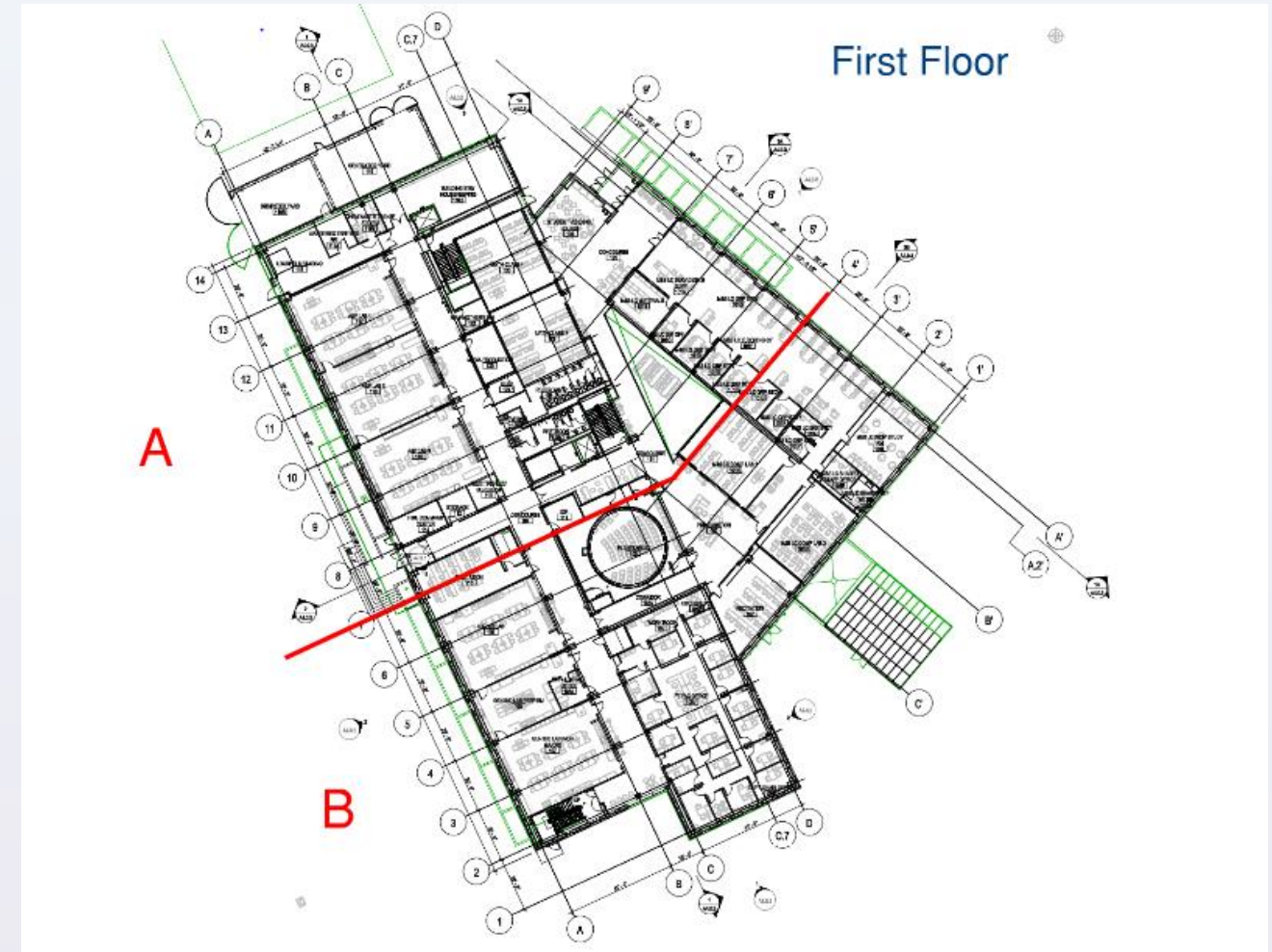
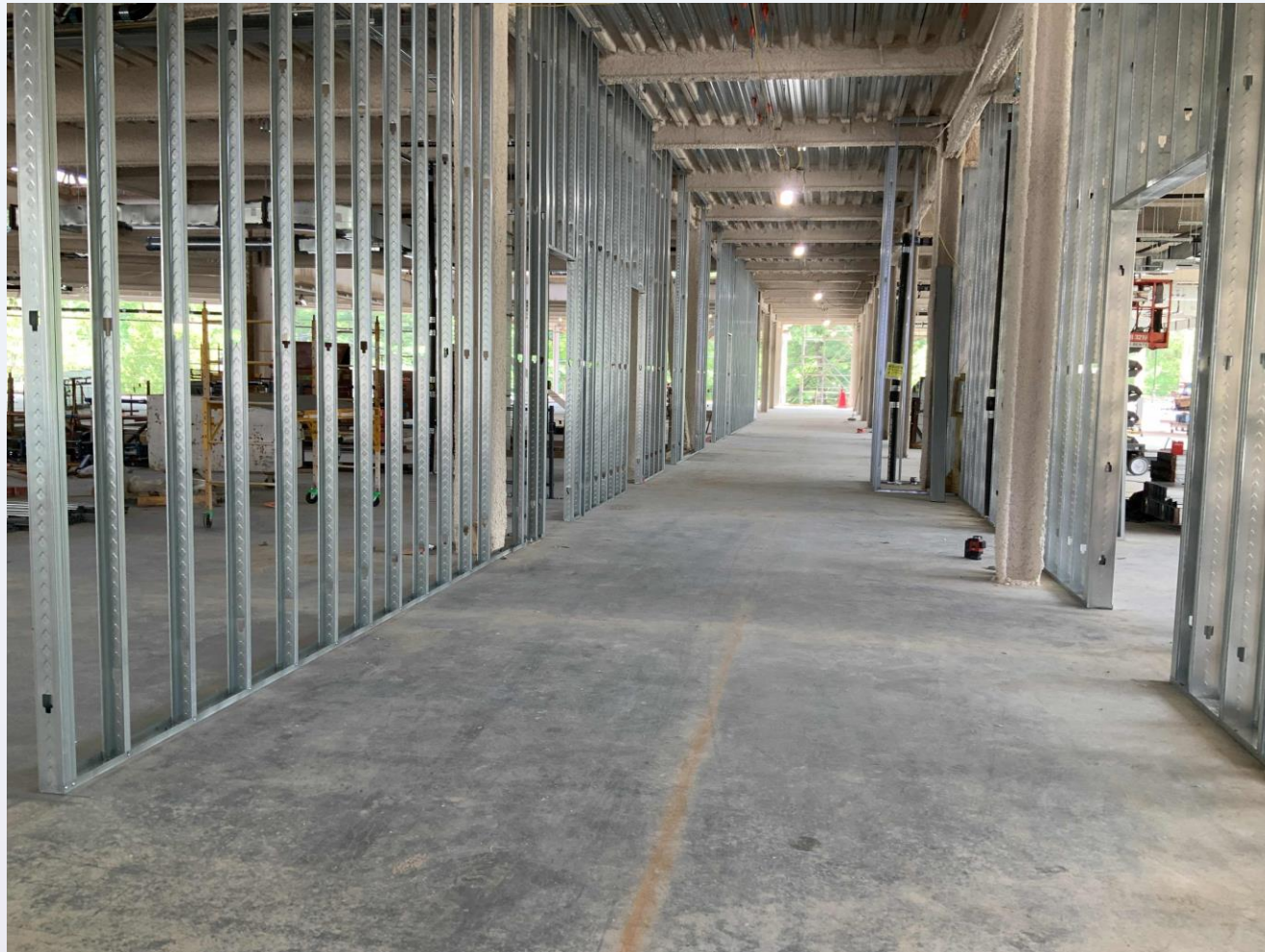
Mortar Mixer

Upcoming Work - Enclosure

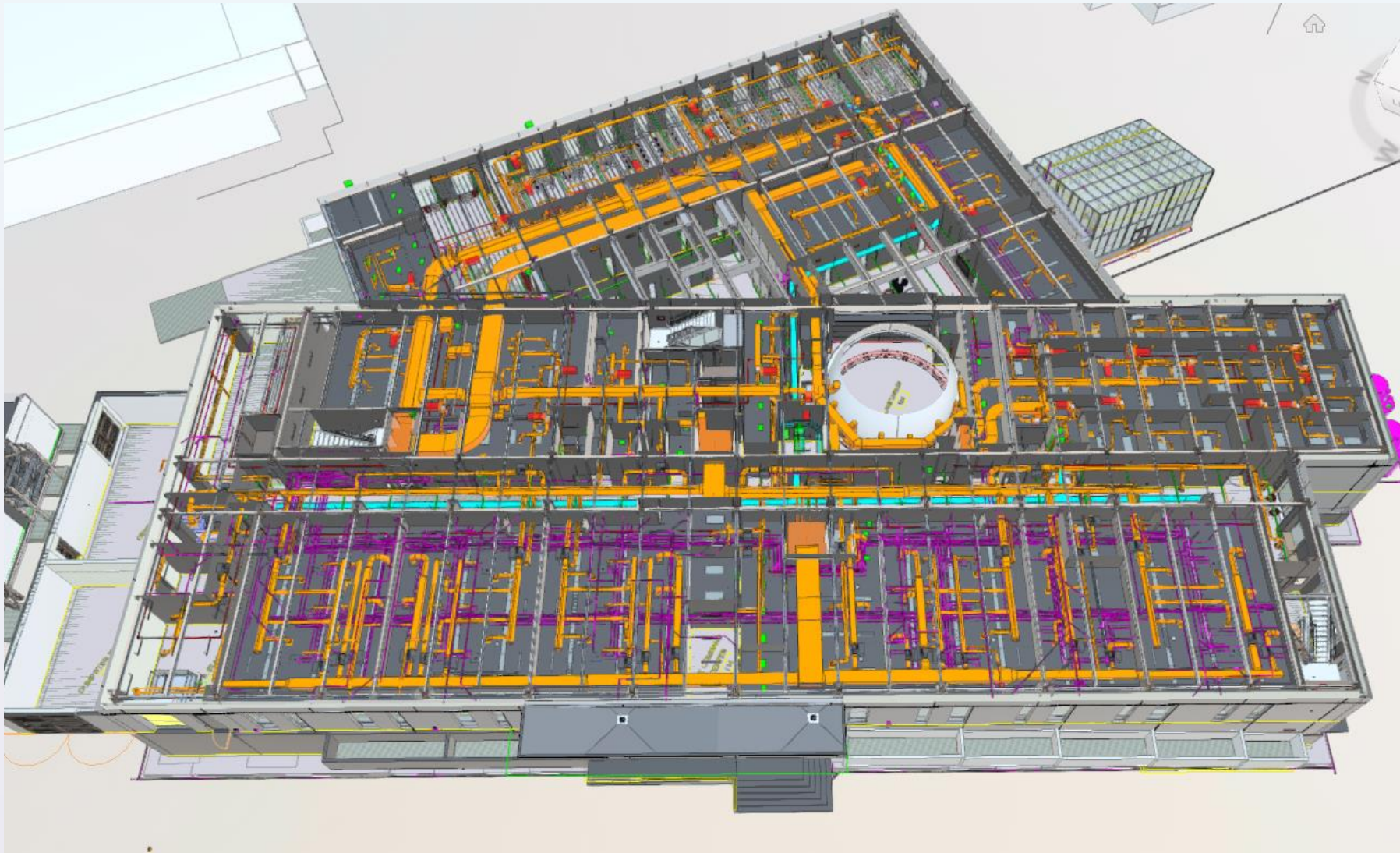


Upcoming Work – Metal Stud Framing

- The pieces / framing behind the finished product



Upcoming Work – Mechanical Initial Phase

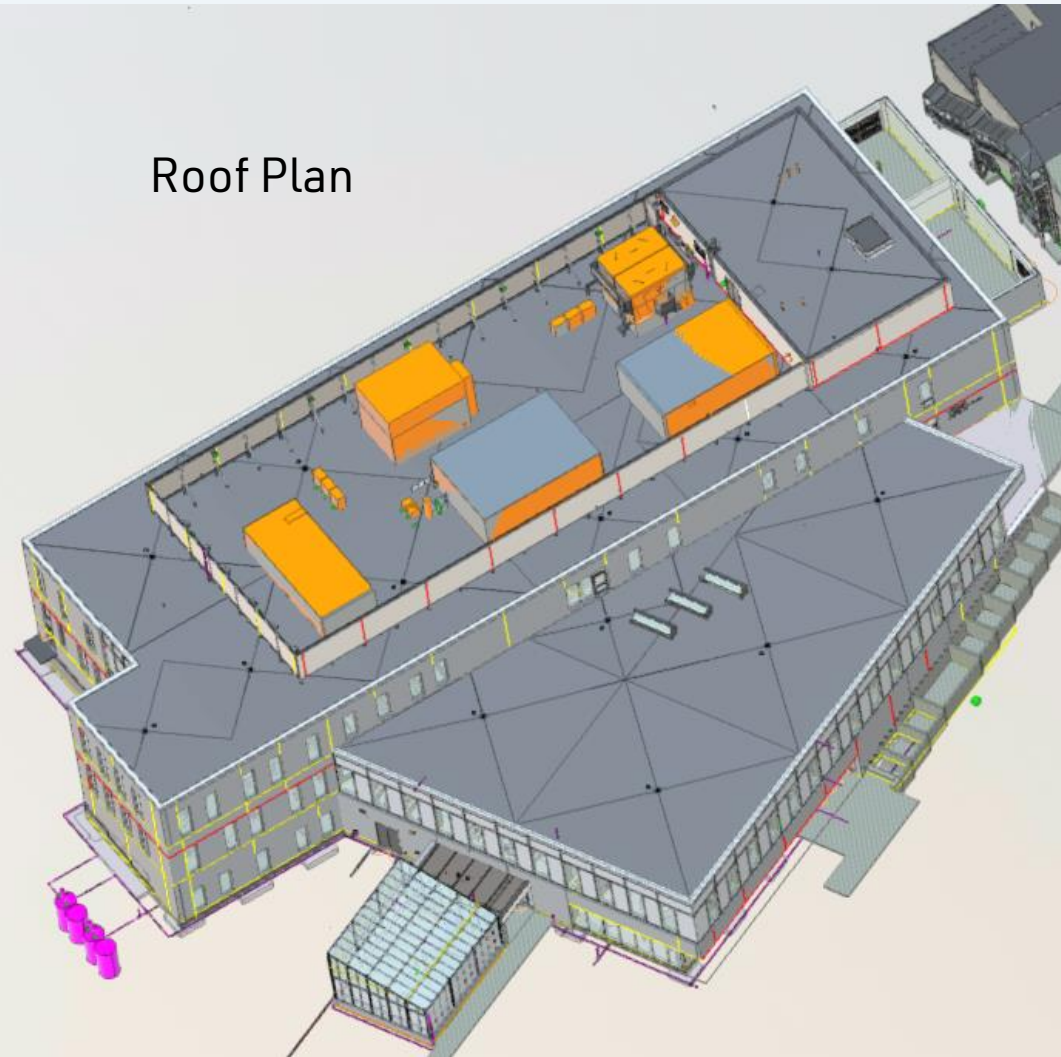


- Components
 - Plumbing/Heating and Air Conditioning Systems
 - Ductwork and Unit Placement on Roof
 - Plumbing
 - Electrical Systems
 - Sprinkler

Upcoming Work - Roofing

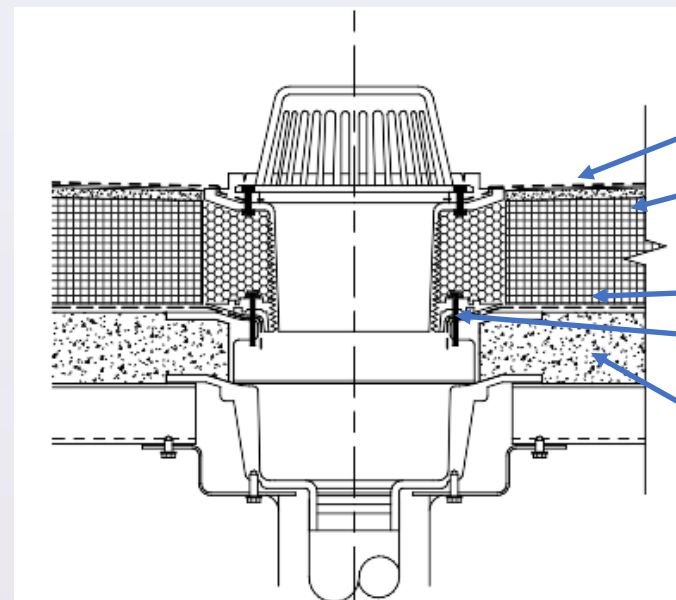


Roof Plan



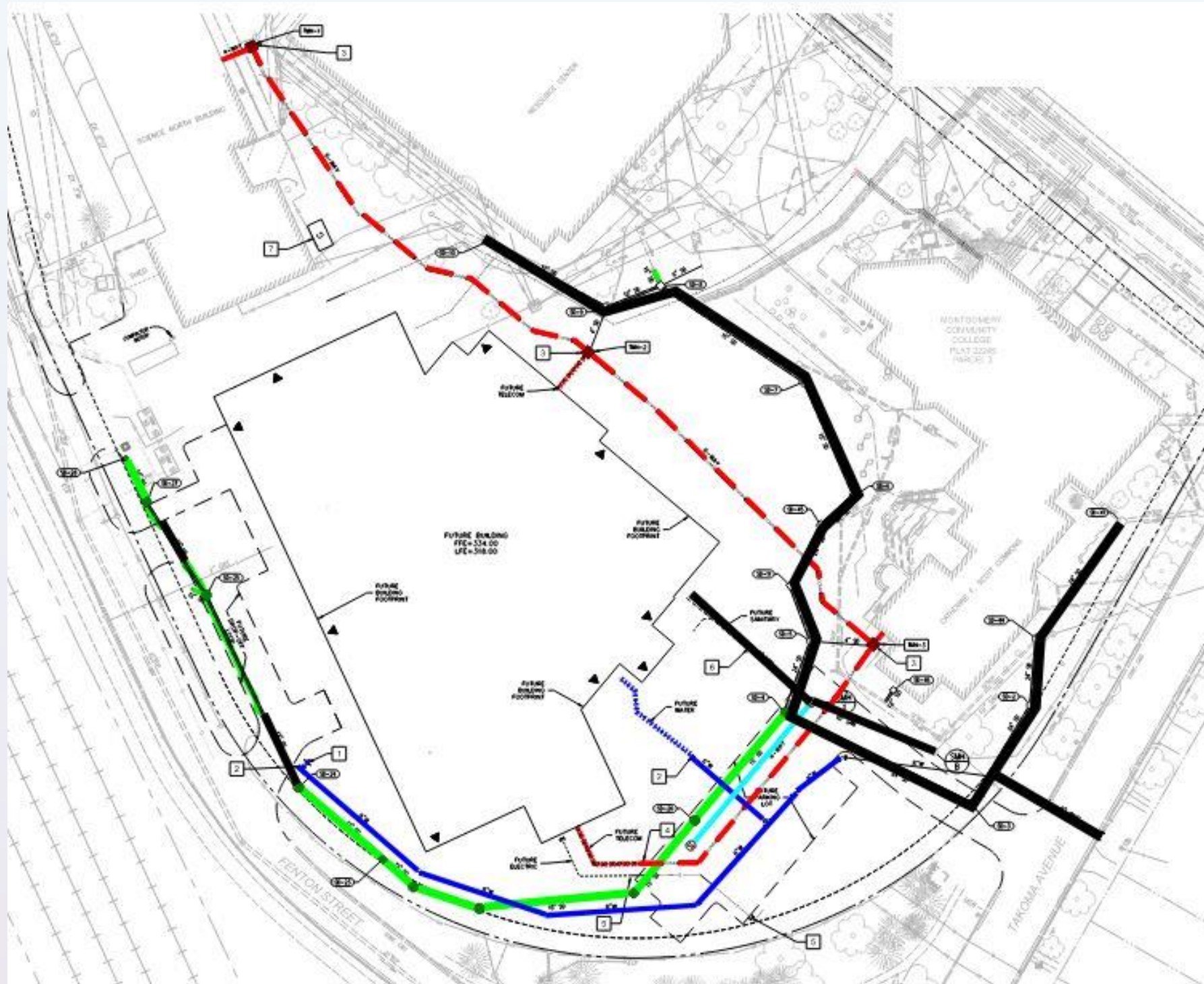
Components:


- Insulation
- Membrane
- Drains



- Roof
- Insulation
- Vapor Barrier
- Roof Drain
- Concrete Deck

Utility Installation - Progress



-  Storm Drain
-  Sanitary Sewer
-  Water
-  Telecom
-  Completed Work



Current Delivery Situation

Current Delivery Situation

- Typical deliveries (concrete, pick up truck, box trucks, trailers) all enter / exit at Fenton St. - **this will not change**



Current Delivery Situation

- Large Equipment Deliveries – Roof Insulation, Mechanical and Electrical Units

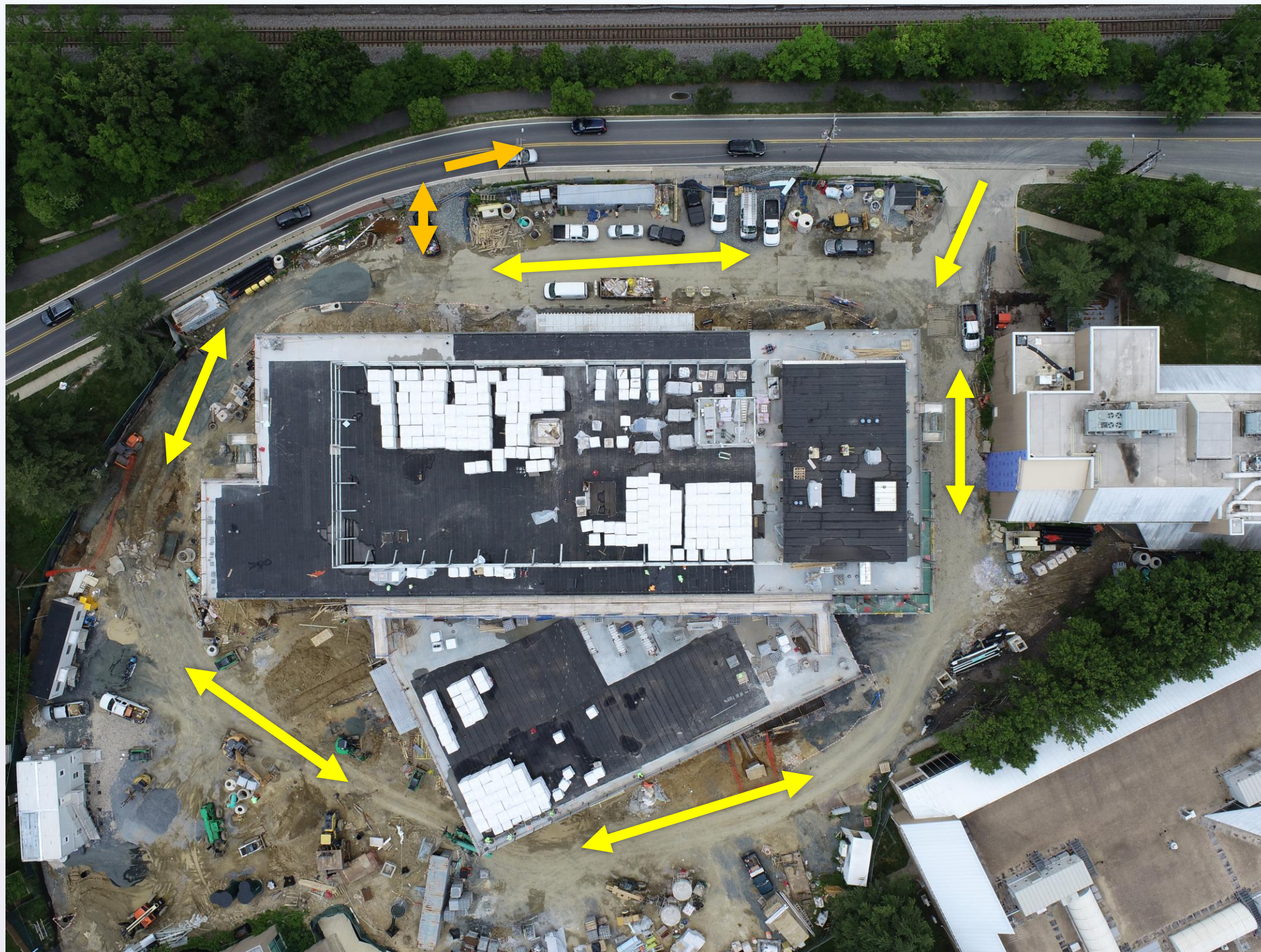


TYPICAL 60' LOW BOY TRAILER



LONG FLAT BED TRUCKS

Site Logistics



Delivery Conditions

Engagement



HOTLINE
800-879-9879



**SCHEDULED MEETINGS
BY APPOINTMENT**

Virtual Meetings



WEBSITE
[montgomerycollege.edu/
tpss-design](http://montgomerycollege.edu/tpss-design)



PROJECT EMAIL
[community@
montgomerycollege.edu](mailto:community@montgomerycollege.edu)



**MEETING SCHEDULE
REGULAR PROJECT
UPDATE FORUMS**

Look forward to our

Next Project Updates

Project Update Forum: Summer / Fall 2022

SMITHGROUP
LINK STRATEGIC PARTNERS

Barton
Malow

MC MONTGOMERY
COLLEGE

Please Join Us for a Virtual Community Meeting!

Takoma Park/Silver Spring Campus

Library Renovation

and

Rooftop Unit Replacements on Pavilions 1 & 2

Tuesday, May 31 at 6pm

LINK STRATEGIC PARTNERS

MC MONTGOMERY
COLLEGE