

The Next Phase of the Catherine and Isiah Leggett Math and Science Building

Takoma Park / Silver Spring Campus

November 2, 2021

Welcome Remarks

Mr. Josh Lasky

Managing Director and Chief Strategist
LINK Strategic Partners

Dr. Brad Stewart

Vice President and Provost, Takoma Park / Silver Spring Campus
Montgomery College

Meeting Agenda

- 1. Current Construction Project Status**
 - COVID-19 Operating Procedures

- 2. Progress Update**

- 3. Logistics**

Barton Malow COVID-19 Operational Procedures

Barton Malow is committed to maintaining a healthy working atmosphere on site and will stay flexible to rapidly evolving guidelines.

Barton Malow Plan follows CDC & Local Guidelines

Social Distancing Measures

- 6' separation at daily foreman meetings
- Smaller group safety orientation meetings held more often than usual
- All work surfaces (i.e.: tables, chairs) cleaned following the meeting
- Cleaning of portable toilets increase to 2x week – on site staff provided with bleach and cleaners
- Face-to-Face meetings held to a minimum – video meetings encouraged
- Workers to maintain 6' separation when working when possible.
- No congregation for lunch (i.e. no lunch room)
- Should a worker report illness after leaving site, a site investigation will be completed
 - Current Guidelines:
 - A worker with a positive result will not be able to return to the site until a negative test result is received.
 - Contact tracing investigation completed – workers identified that require testing and possible quarantine

Progress Update

MC MONTGOMERY COLLEGE

Homepage **Updates** Community Engagement ▾ Comments Contact Resources 🔍

Leggett Building Project Activity Update – October 29, 2021

Dear Neighbors,

Thank you for your interest in the Leggett Building construction project at the Takoma Park/Silver Spring Campus. We will strive to keep our neighbors informed about significant construction events with this weekly email notification.

Upcoming activities are listed below:

- **Hauling Materials**
The amount of soil being removed from the site is diminishing and the soil replacement for the foundation of the new building is advancing.
- **Concrete**
The placement and delivery of concrete frames, reinforcing bar, and concrete materials continue to move forward. Concrete for the footers and foundation walls is being poured and concrete operations are progressing towards the south end of the site. All trucks will be required to follow designated routes to and from the site and will enter and exit on Fenton Street from Philadelphia.
- **Project Update Forum**
Please join us on Tuesday, November 2 for a virtual Project Updated Forum at 6 p.m. We will provide an update on the status of construction and give an overview of upcoming phases. [Register here.](#)

Please visit the project's website at montgomerycollege.edu/tpss-design for additional information. You may contact us with questions at community@montgomerycollege.edu or call the project hotline at 800-879-9879.

Thank you,
The Montgomery College Team

Search 🔍

Recent Posts

- 📅 Leggett Building Project Activity Update – October 29, 2021
- 📅 Leggett Building Project Activity Update – October 22, 2021
- 📅 Virtual Project Update Forum – November 2, 2021
- 📅 Leggett Building Project Activity Update – October 15, 2021
- 📅 Leggett Building Project Activity Update – October 8, 2021

Archives

- 📅 October 2021
- 📅 September 2021

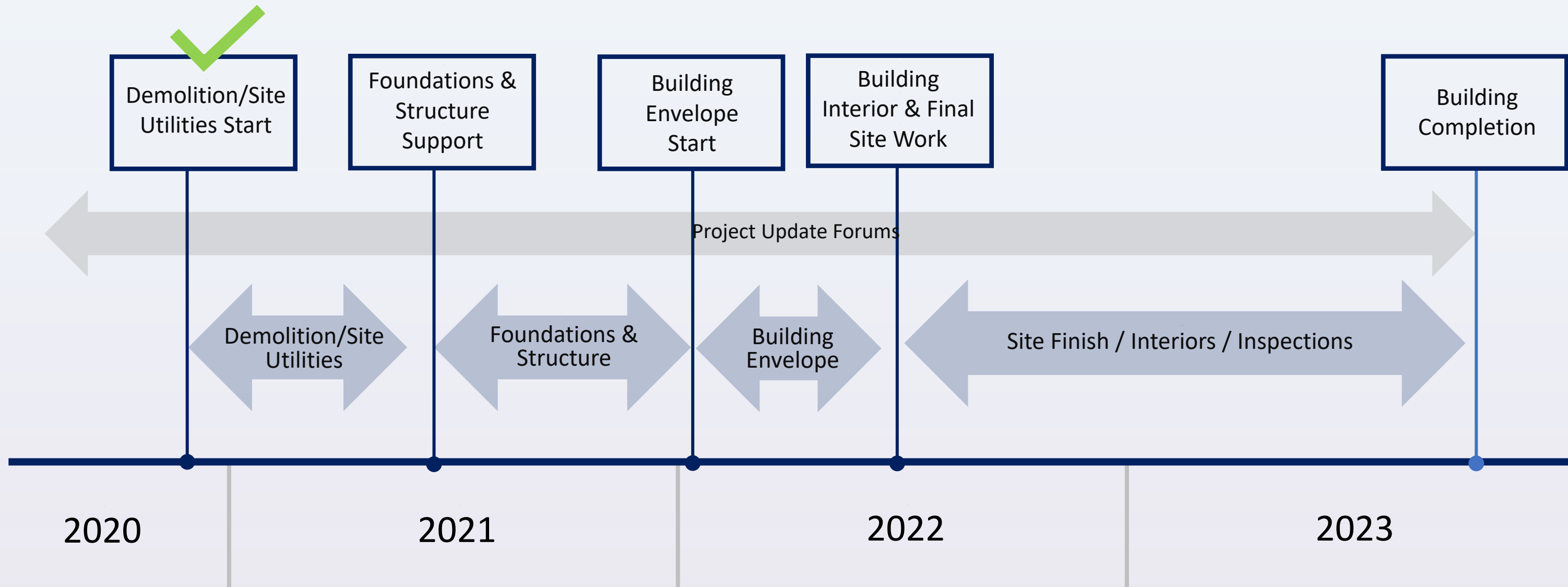
Fact Sheets

- **Asbestos Info Sheet:** Asbestos Information from the State of Maryland and Montgomery College
- **Instructional Lab Operations at Montgomery College**
- **LEED Info Sheet:** Sustainability Information: LEED Is “Green Buildings”
- **Tree Protection:** July 2019
- **Environmental Site Design/Stormwater Management:** July 2019
- **Landscape Fact Sheet:** June 2020
- **Updated Landscape Fact Sheet:** August 2020
- **Stormwater Management Fact Sheet**
- **Noise Fact Sheet/Noise Mitigation Plan:** November 2020

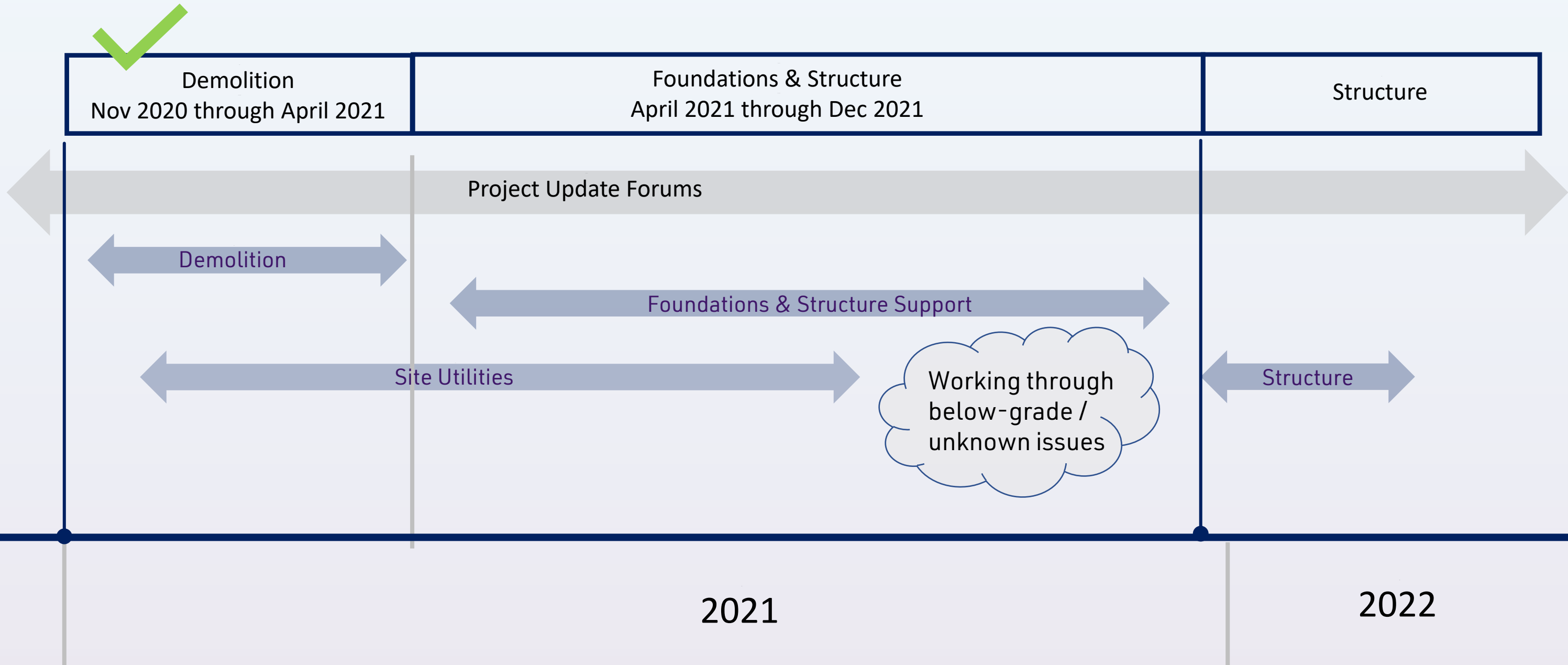
- Weekly updates on the website every Friday
- **Note:** Significant changes occurring between updates will have an additional post

Construction Overview Timeline

Looking Ahead



Construction Look Ahead



Existing Conditions



Foundation & Structure Support

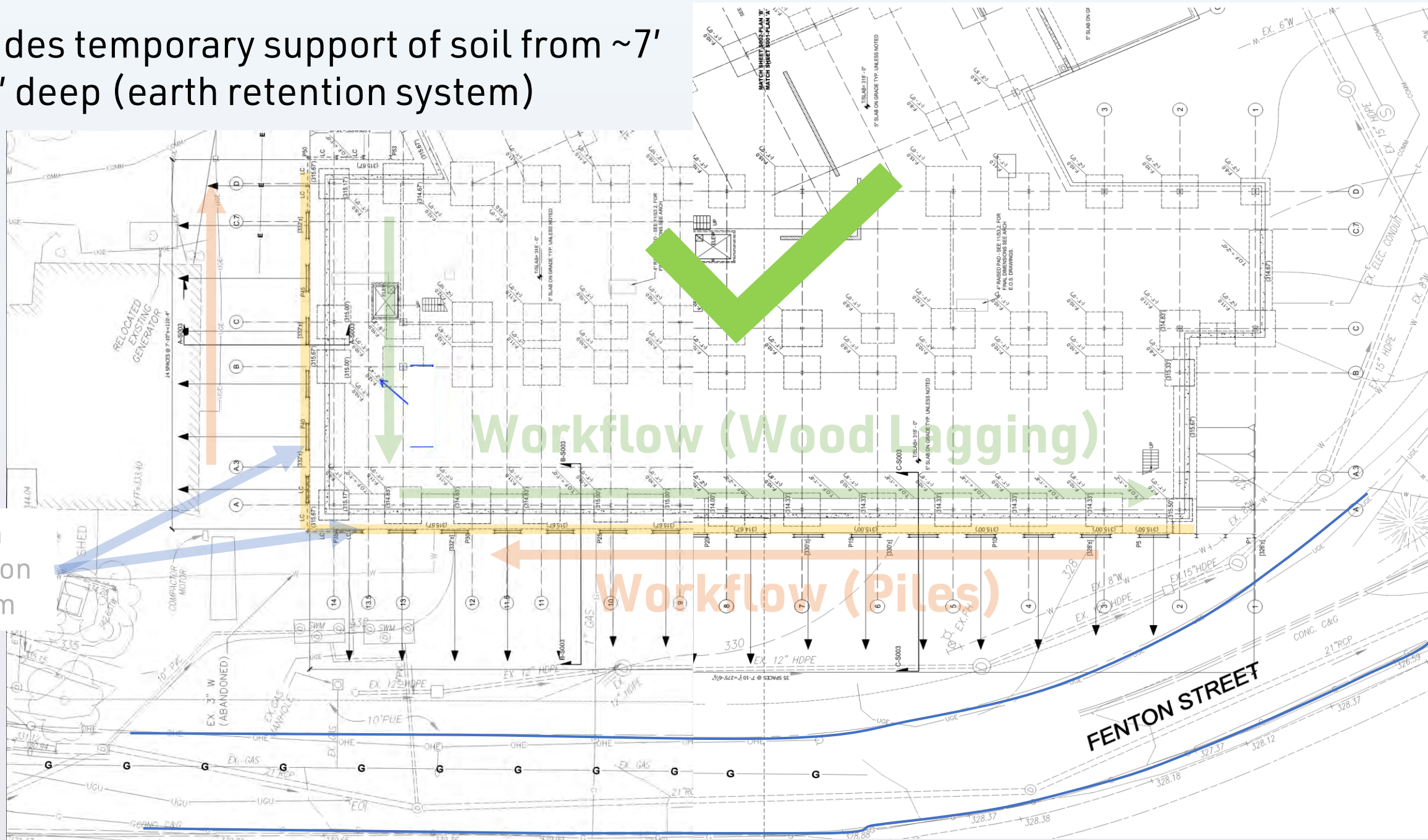


- Sheeting & Shoring Complete
- Foundations / Foundation Walls Underway

Upcoming Work - Sheeting & Shoring

[COMPLETE]

Provides temporary support of soil from ~7' to 17' deep (earth retention system)

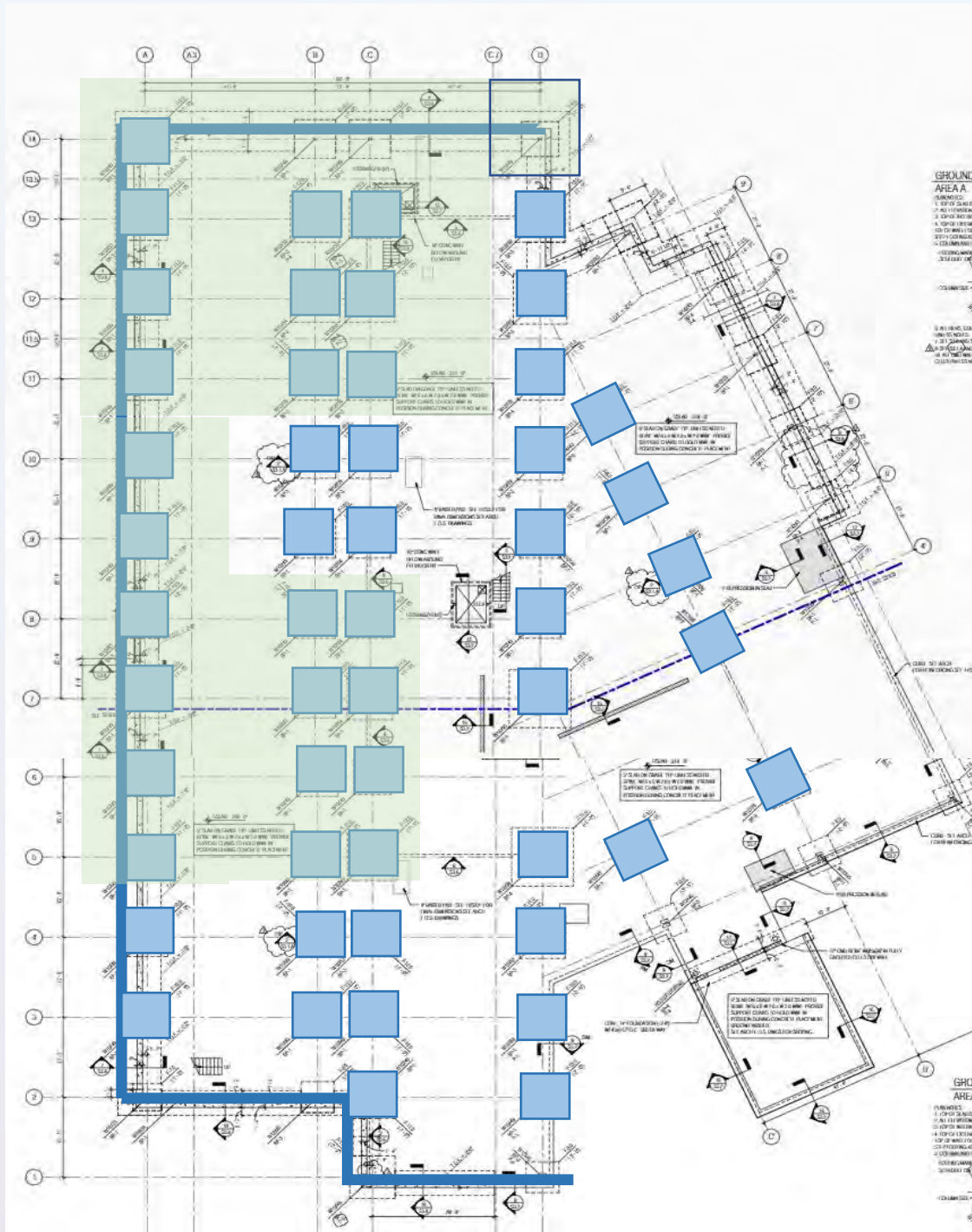


Earth Retention System

Workflow (Wood Lagging)

Workflow (Piles)

Foundation - Progress



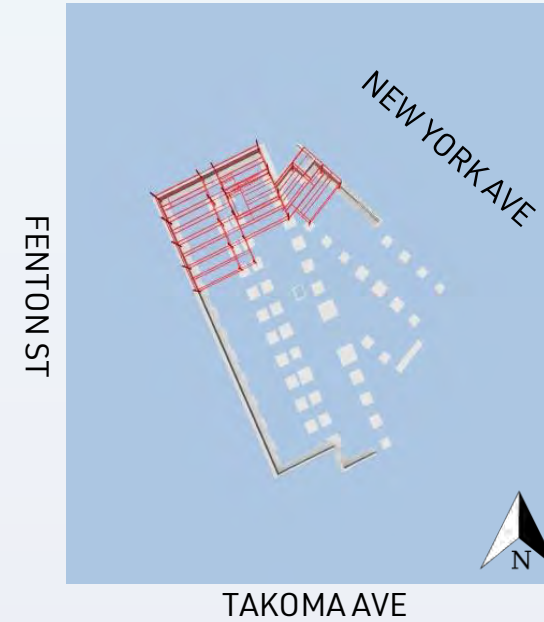
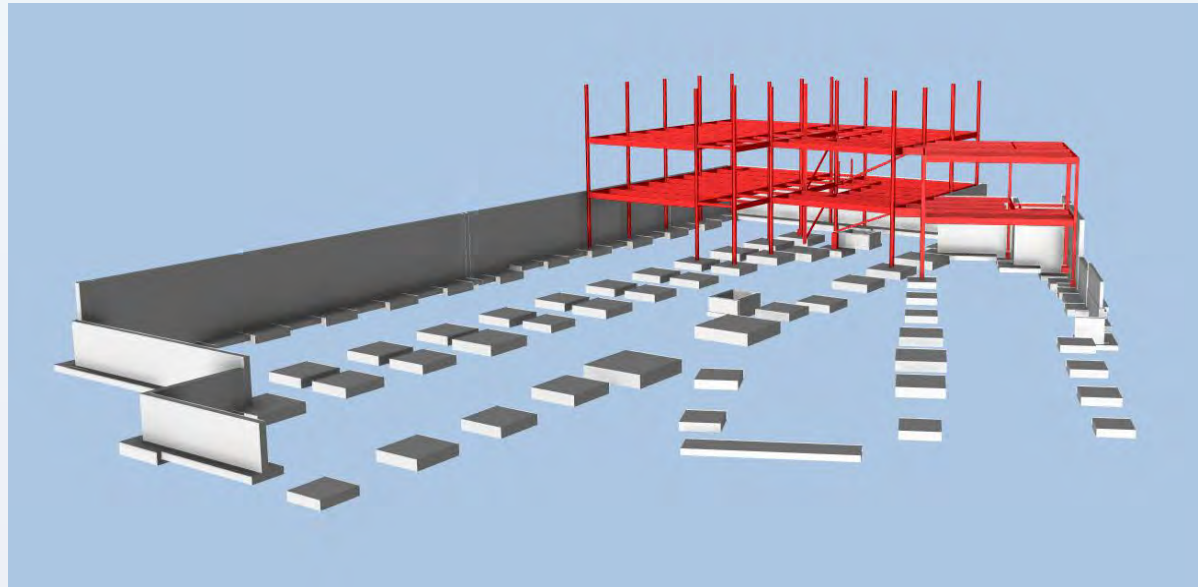
Ongoing Work - Concrete Foundations

- Underground concrete foundations to started Sept 2021
- Deliveries
 - Steel rebar trucks
 - Concrete trucks
 - Formwork
- Work Activities
 - Cutting of forms (wood)
 - Saw cutting rebar
 - Excavator to dig holes
 - Concrete truck deliveries
- Noise Management
 - No unnecessary equipment idling
 - Concrete trucks "rotation" at a lower turn until on site
- Estimated duration: 3 Months

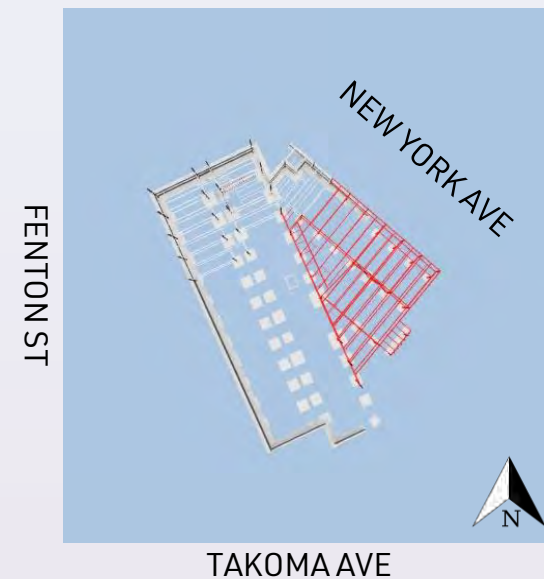
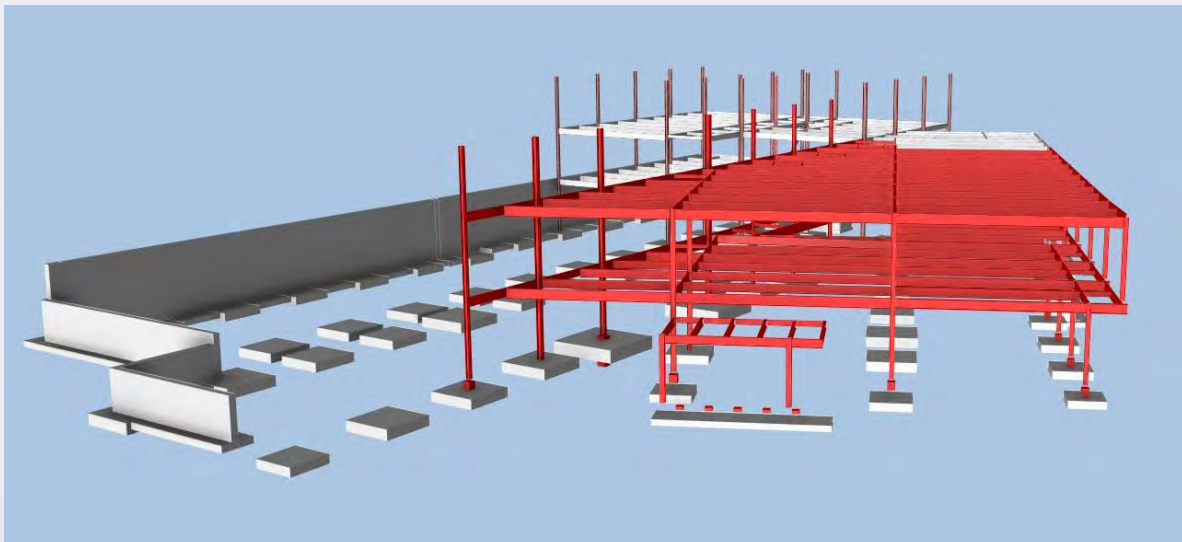
Upcoming Work - Steel Erection

[Anticipated Start Dec 2021]

Steel Erection - Phase 1

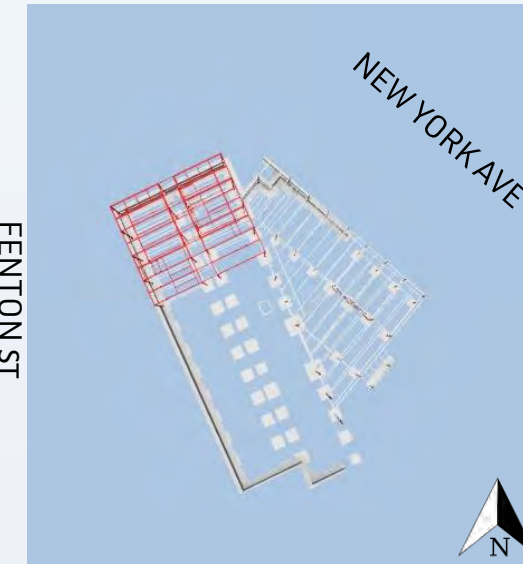
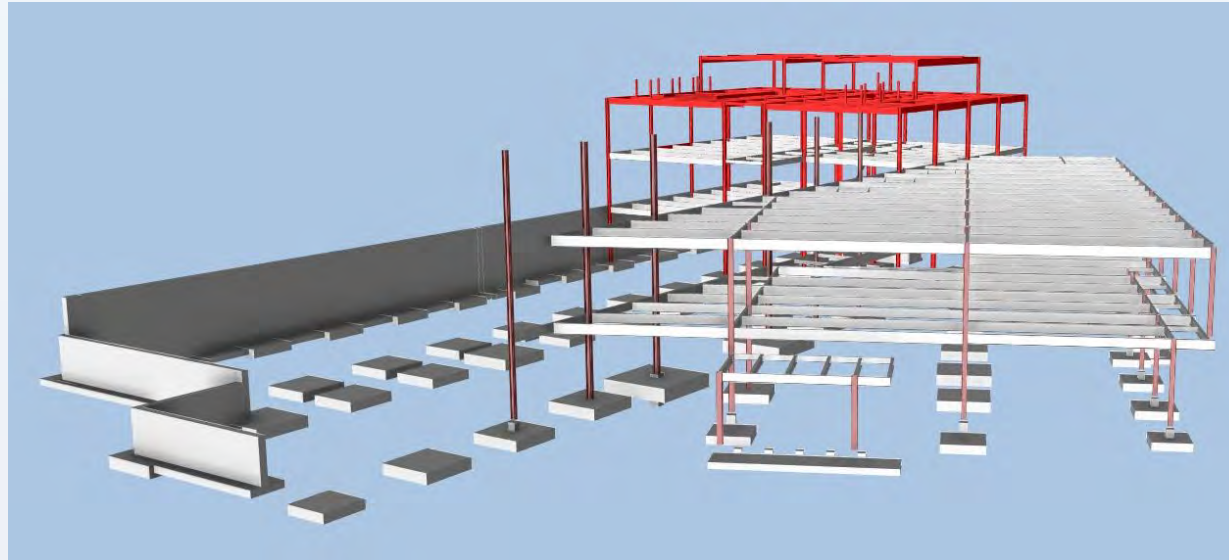


Steel Erection Phase 2



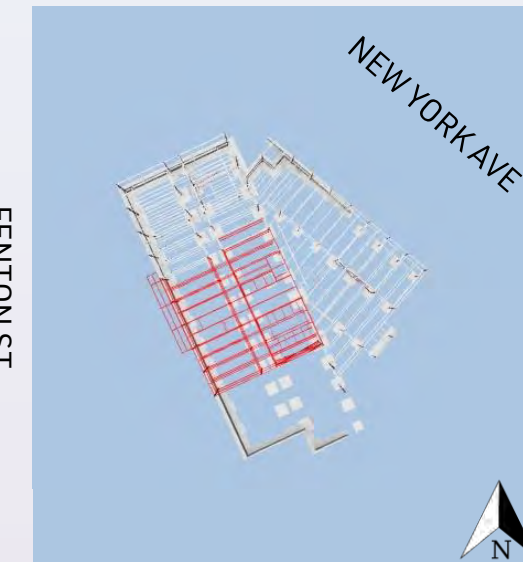
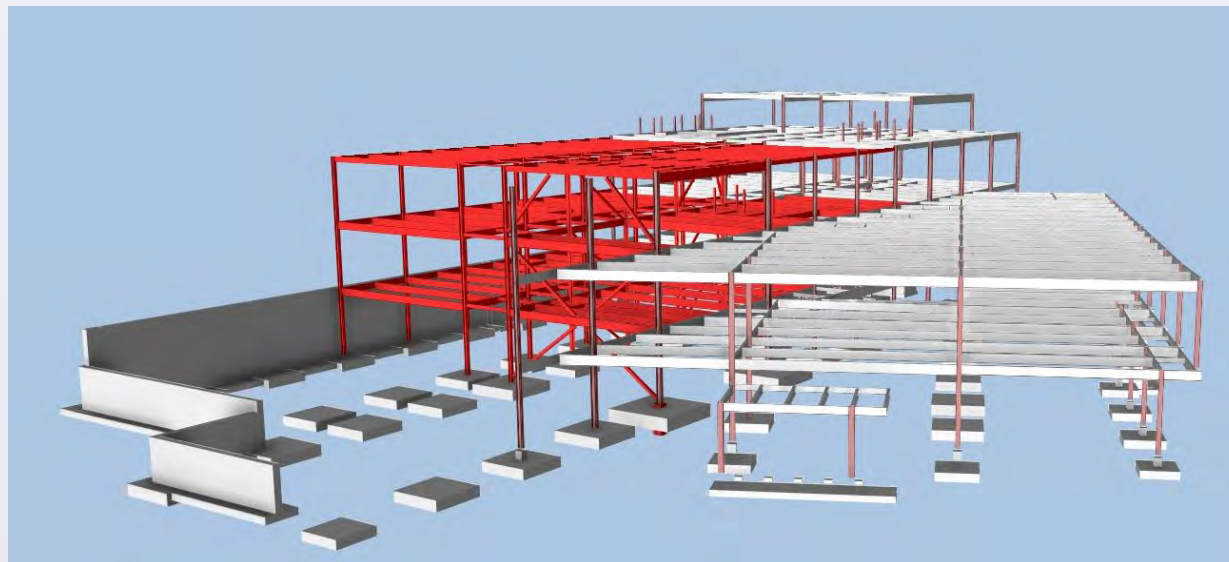
Upcoming Work - Steel Erection

Steel Erection Phase 3



TAKOMA AVE

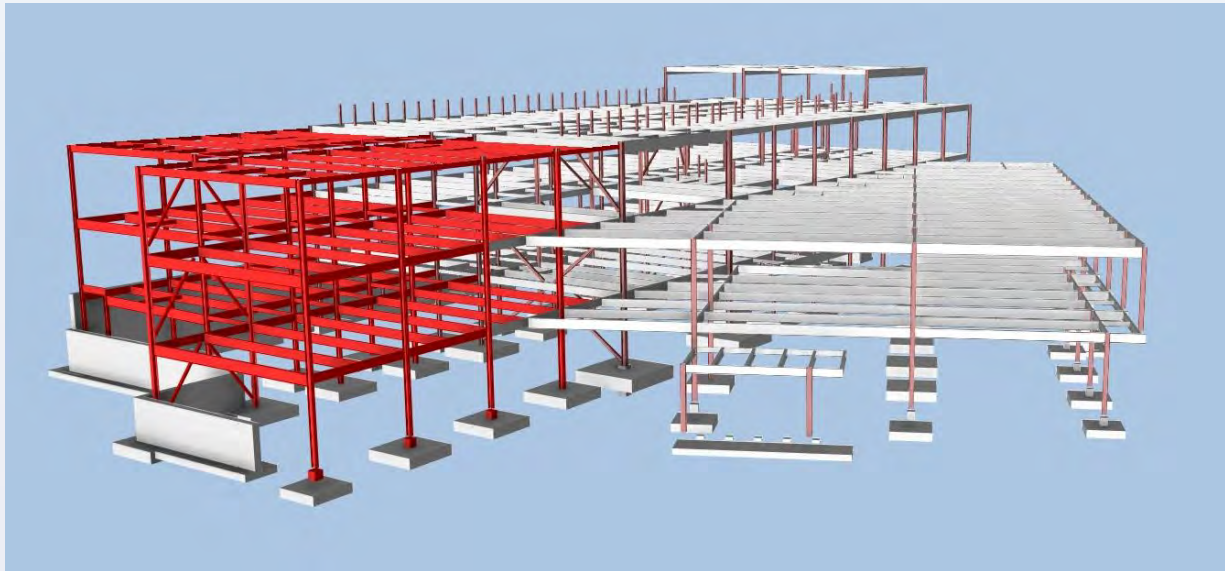
Steel Erection Phase 4



TAKOMA AVE

Upcoming Work – Steel Erection

Steel Erection Phase 5



Steel Crane Delivery

- 6 flatbed trucks delivering crane
- No road closures
- Trucks will be escorted to the site
- Late morning / early afternoon delivery



Steel Erection Crane



Steel Deliveries

- Trucks spaced at intervals
 - Queuing is possible in parking lot at Student Services Center
 - Flagging personnel at entrance for safety
-
- Estimated "Lowboy" and Long Flat Bed Truck Volume
 - Structural Steel : 40-50 lowboy deliveries
 - Estimate 8-10 deliveries / week



TYPICAL 60' LOW BOY TRAILER

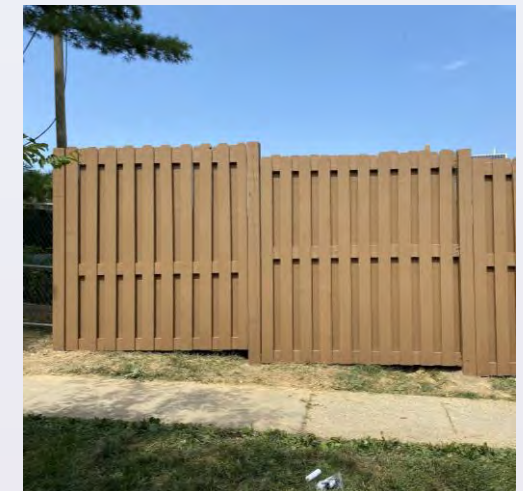
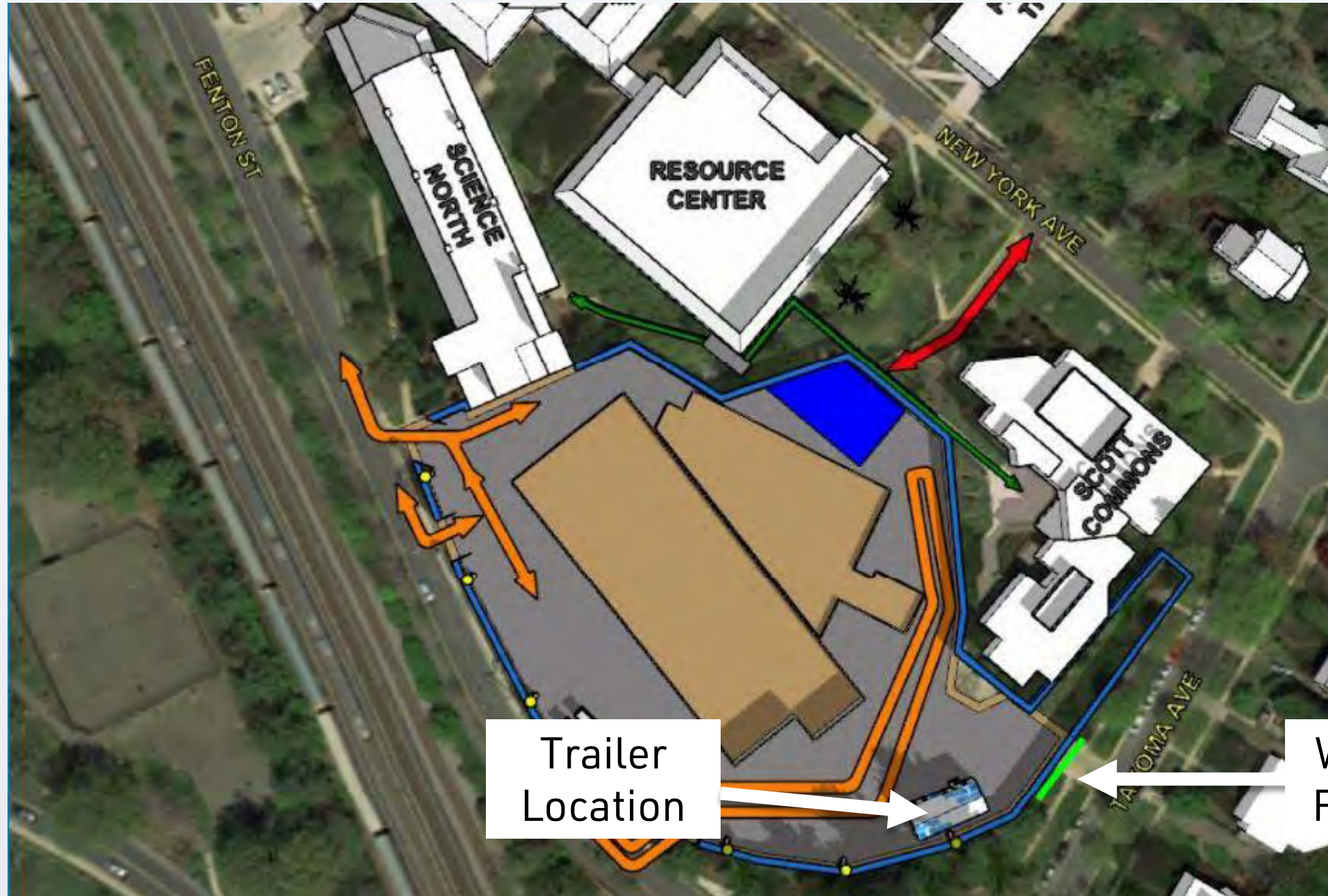
Current Delivery Situation

- Typical deliveries (concrete, pick up truck, box trucks, trailers) all enter / exit at Fenton St. - **this will not change**



Site Logistics

Logistics





Existing Conditions



Delivery Conditions



Delivery Conditions



Delivery Conditions

Engagement



HOTLINE
800-879-9879



**SCHEDULED MEETINGS
BY APPOINTMENT**

Virtual Meetings



WEBSITE
[montgomerycollege.edu/
tpss-design](http://montgomerycollege.edu/tpss-design)



PROJECT EMAIL
[community@
montgomerycollege.edu](mailto:community@montgomerycollege.edu)



**MEETING SCHEDULE
REGULAR PROJECT
UPDATE FORUMS**

Look forward to our

Next Project Updates

Project Update Forum: Early 2022

SMITHGROUP
LINK STRATEGIC PARTNERS

Barton
Malow

MC MONTGOMERY
COLLEGE