

USING AGENCY APPROVAL

NAME DATE

TITLE

DGS APPROVAL

PROJECT MANAGER DATE

CHIEF OF PM&D DATE

SMITHGROUP

1700 NEW YORK AVENUE NW
SUITE 100
WASHINGTON, DC 20006
202.842.2100
www.smithgroup.com

AMT Engineering
CIVIL ENGINEERS
800 King Farm Boulevard, 4th Floor
Rockville, MD 20850
301-881-2545

Cagley & Associates
STRUCTURAL ENGINEERS
6141 Executive Boulevard
Rockville, MD 20852
301-881-6000

Mahan Rykiel
LANDSCAPE ARCHITECTS
3300 Clipper Mill Road, Suite 200
Baltimore, MD 21214
410-235-6001

Spexsys
AV, IT, SECURITY
7257 Parkway Drive, Suite 200
Hanover, MD 21076
410-712-0093

DWG FILE:

DRAWN BY:

CHECKED BY:

ISSUED FOR:	REV	DATE

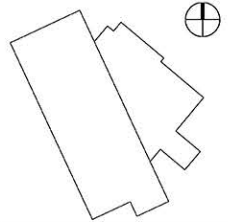
CONFORMED SET 19 NOV 2020

SEALS AND SIGNATURES

PROFESSIONAL CERTIFICATION
I HEREBY CERTIFY THAT THESE DOCUMENTS WERE PREPARED OR APPROVED BY ME, AND THAT I AM A DULY LICENSED PROFESSIONAL ENGINEER UNDER THE LAWS OF THE STATE OF MARYLAND.

MICHAEL C WYCHULIS, P.E.
LICENSE NO. 25551 EXPIRATION DATE: 01/06/22

KEYPLAN

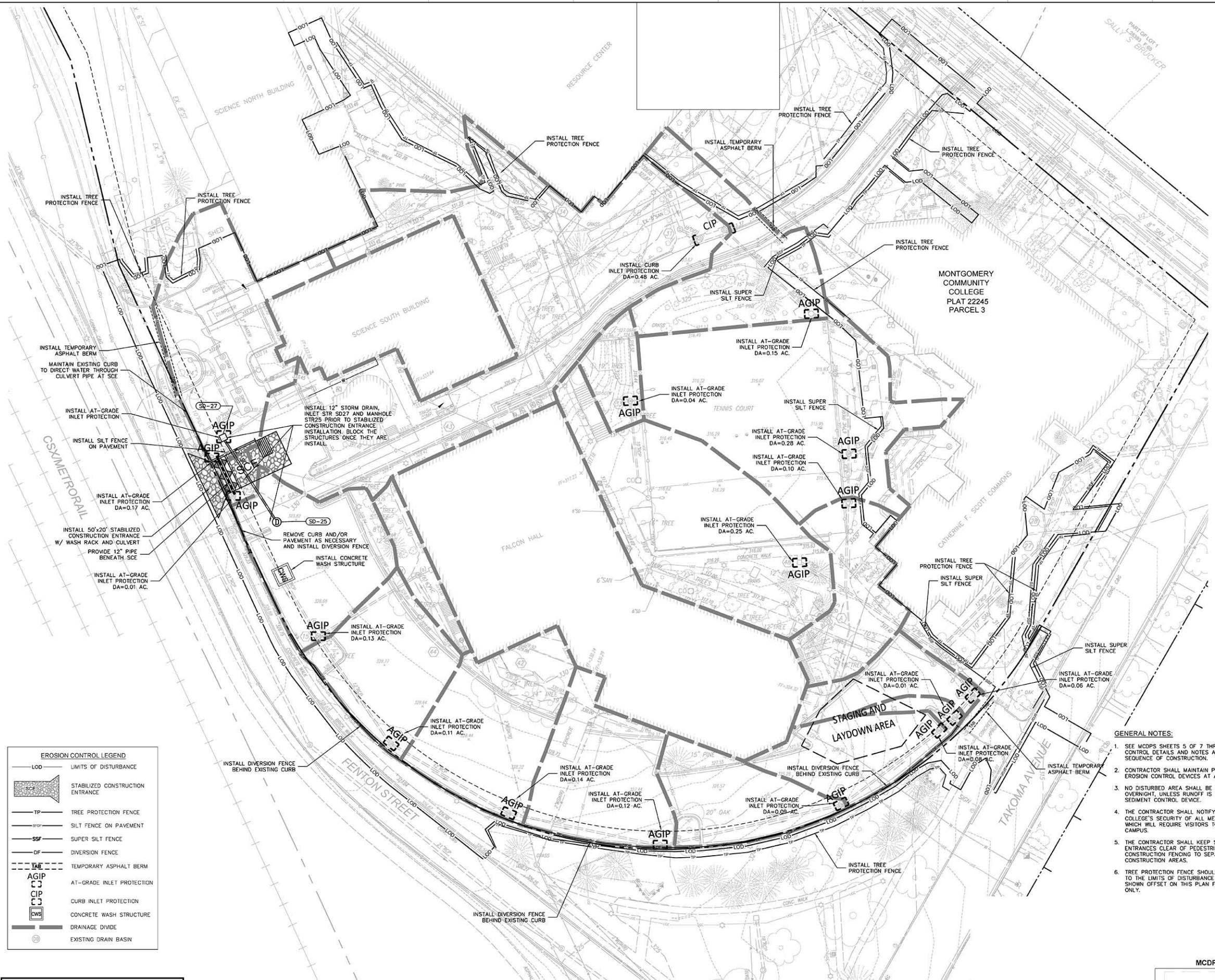


SHEET TITLE
EROSION AND SEDIMENT CONTROL PLAN
INITIAL PHASE

PROJECT NUMBER

C-04

SHEET NUMBER



MONTGOMERY
COMMUNITY
COLLEGE
PLAT 22245
PARCEL 3

EROSION CONTROL LEGEND

— LOD	LIMITS OF DISTURBANCE
— SCE	STABILIZED CONSTRUCTION ENTRANCE
— TP	TREE PROTECTION FENCE
— SFP	SILT FENCE ON PAVEMENT
— SSF	SUPER SILT FENCE
— DF	DIVERSION FENCE
— TAB	TEMPORARY ASPHALT BERM
— AGIP	AT-GRADE INLET PROTECTION
— CIP	CURB INLET PROTECTION
— CWS	CONCRETE WASH STRUCTURE
— DR	DRAINAGE DIVIDE
— EDB	EXISTING DRAIN BASIN

GENERAL NOTES:

1. SEE MCSPS SHEETS 5 OF 7 THROUGH 7 OF 7 FOR EROSION CONTROL DETAILS AND NOTES AND SHEET 6 OF 7 FOR SEQUENCE OF CONSTRUCTION.
2. CONTRACTOR SHALL MAINTAIN POSITIVE DRAINAGE TO EROSION CONTROL DEVICES AT ALL TIMES.
3. NO DISTURBED AREA SHALL BE LEFT UNSTABILIZED OVERNIGHT, UNLESS RUNOFF IS DIRECTED TO AN APPROVED SEDIMENT CONTROL DEVICE.
4. THE CONTRACTOR SHALL NOTIFY THE COLLEGE AND THE COLLEGE'S SECURITY OF ALL MEETINGS, INSPECTIONS, ETC. WHICH WILL REQUIRE VISITORS TO ENTER THE COLLEGE CAMPUS.
5. THE CONTRACTOR SHALL KEEP STABILIZED CONSTRUCTION ENTRANCES CLEAR OF PEDESTRIAN TRAFFIC. PROVIDE CONSTRUCTION FENCING TO SEPARATE PEDESTRIANS FROM CONSTRUCTION AREAS.
6. TREE PROTECTION FENCE SHOULD BE INSTALLED AS CLOSE TO THE LIMITS OF DISTURBANCE AS POSSIBLE, LINES ARE SHOWN OFFSET ON THIS PLAN FOR GRAPHICAL PURPOSES ONLY.

NOTE TO THE CONTRACTOR: "MAINTENANCE OF EROSION AND SEDIMENT CONTROL SHALL BE STRICTLY ENFORCED"
THIS PLAN IS FOR EROSION & SEDIMENT CONTROL PURPOSES ONLY.



811
MISS UTILITY
48 HOURS BEFORE YOU DIG
CALL "MISS UTILITY" AT 811
OR LOG ON TO www.missutility.net

USING AGENCY APPROVAL

NAME	DATE

DGS APPROVAL

PROJECT MANAGER	DATE

CHIEF OF PM&D

NAME	DATE

SMITHGROUP

1700 NEW YORK AVENUE NW
 SUITE 100
 WASHINGTON, DC 20006
 202.842.2100
 www.smithgroup.com

AMT Engineering
 CIVIL ENGINEERS
 800 King Farm Boulevard, 4th Floor
 Rockville, MD 20859
 301-881-2545

Cagley & Associates
 STRUCTURAL ENGINEERS
 6141 Executive Boulevard
 Rockville, MD 20852
 301-881-6509

Mahan Rykiel
 LANDSCAPE ARCHITECTS
 3300 Clipper Mill Road, Suite 200
 Baltimore, MD 21214
 410-235-6001

Spexsys
 AV. IT. SECURITY
 7257 Parkway Drive, Suite 260
 Hanover, MD 21076
 410-712-0393

DWG FILE:

DRAWN BY:

CHECKED BY:

ISSUED FOR:	REV	DATE

CONFORMED SET 19 NOV 2020

SEALS AND SIGNATURES

PROFESSIONAL CERTIFICATION:
 I HEREBY CERTIFY THAT THESE DOCUMENTS WERE PREPARED OR APPROVED BY ME, AND THAT I AM A DULY LICENSED PROFESSIONAL ENGINEER UNDER THE LAWS OF THE STATE OF MARYLAND.

MICHAEL C. WYCHULIS, P.E.
 LICENSE NO. 32951 EXPIRATION DATE: 01/06/22

KEY PLAN NORTH

MONTGOMERY
 COMMUNITY
 COLLEGE
 PLAT 22245
 PARCEL 3

FUTURE BUILDING
 FFE=334.00
 LFE=318.00

STAGING AND
 LAYDOWN AREA

EROSION CONTROL LEGEND

LOD	LIMITS OF DISTURBANCE
SCE	STABILIZED CONSTRUCTION ENTRANCE
TP	TREE PROTECTION FENCE
SFP	SILT FENCE ON PAVEMENT
SSF	SUPER SILT FENCE
DF	DIVERSION FENCE
TAB	TEMPORARY ASPHALT BERM
AGIP	AT-GRADE INLET PROTECTION
CIP	CURB INLET PROTECTION
CWS	CONCRETE WASH STRUCTURE
DD	DRAINAGE DIVIDE
EDB	EXISTING DRAIN BASIN

GENERAL NOTES:

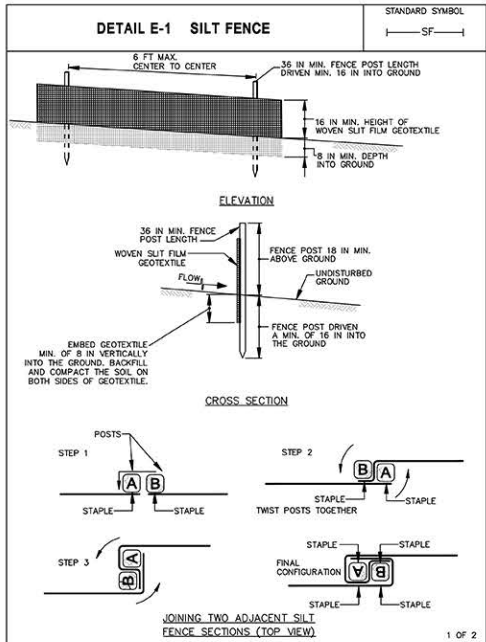
1. SEE MCDPS SHEETS 5 OF 7 THROUGH 7 OF 7 FOR EROSION CONTROL DETAILS AND NOTES AND SHEET 6 OF 7 FOR SEQUENCE OF CONSTRUCTION.
2. CONTRACTOR SHALL MAINTAIN POSITIVE DRAINAGE TO EROSION CONTROL DEVICES AT ALL TIMES.
3. NO DISTURBED AREA SHALL BE LEFT UNSTABILIZED OVERNIGHT, UNLESS RUNOFF IS DIRECTED TO AN APPROVED SEDIMENT CONTROL DEVICE.
4. THE CONTRACTOR SHALL NOTIFY THE COLLEGE AND THE COLLEGE'S SECURITY OF ALL MEETINGS, INSPECTIONS, ETC. WHICH WILL REQUIRE VISITORS TO ENTER THE COLLEGE CAMPUS.
5. THE CONTRACTOR SHALL KEEP STABILIZED CONSTRUCTION ENTRANCES CLEAR OF PEDESTRIAN TRAFFIC. PROVIDE CONSTRUCTION FENCING TO SEPARATE PEDESTRIANS FROM CONSTRUCTION AREAS.
6. TREE PROTECTION FENCE SHOULD BE INSTALLED AS CLOSE TO THE LIMITS OF DISTURBANCE AS POSSIBLE. LINES ARE SHOWN OFFSET ON THIS PLAN FOR GRAPHICAL PURPOSES ONLY.

NOTE TO THE CONTRACTOR: "MAINTENANCE OF EROSION AND SEDIMENT CONTROL SHALL BE STRICTLY ENFORCED"
 THIS PLAN IS FOR EROSION & SEDIMENT CONTROL PURPOSES ONLY.

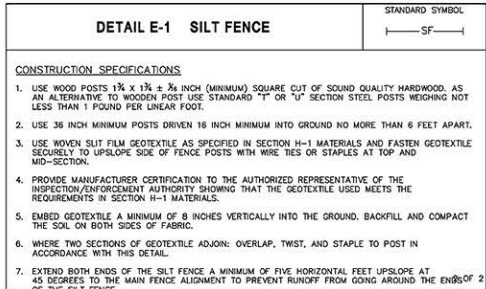


811
 Know what's below.
 Call before you dig.

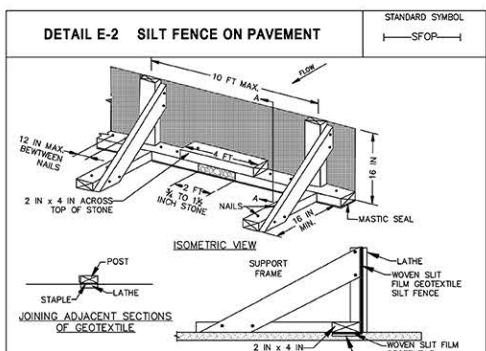
MISS UTILITY
 48 HOURS BEFORE YOU DIG
 CALL "MISS UTILITY" AT 811
 OR LOG ON TO www.missutility.net



MARYLAND STANDARDS AND SPECIFICATIONS FOR SOIL EROSION AND SEDIMENT CONTROL	
U.S. DEPARTMENT OF AGRICULTURE NATURAL RESOURCES CONSERVATION SERVICE	2011
MARYLAND DEPARTMENT OF ENVIRONMENT WATER MANAGEMENT ADMINISTRATION	

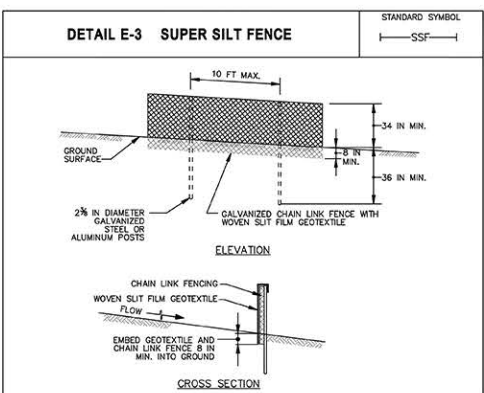


MARYLAND STANDARDS AND SPECIFICATIONS FOR SOIL EROSION AND SEDIMENT CONTROL	
U.S. DEPARTMENT OF AGRICULTURE NATURAL RESOURCES CONSERVATION SERVICE	2011
MARYLAND DEPARTMENT OF ENVIRONMENT WATER MANAGEMENT ADMINISTRATION	



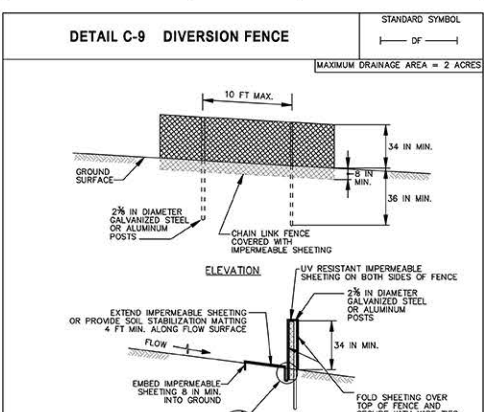
- CONSTRUCTION SPECIFICATIONS**
- USE NOMINAL 2 INCH X 4 INCH LUMBER.
 - USE WOVEN SILT FILM GEOTEXTILE, AS SPECIFIED IN SECTION H-1 MATERIALS.
 - PROVIDE MANUFACTURER CERTIFICATION TO THE AUTHORIZED REPRESENTATIVE OF THE INSPECTION/ENFORCEMENT AUTHORITY SHOWING THAT THE GEOTEXTILE USED MEETS THE REQUIREMENTS IN SECTION H-1 MATERIALS.
 - SPACE UPRIGHT SUPPORTS NO MORE THAN 10 FEET APART.
 - MAINTAIN A TWO FOOT OPENING BETWEEN EVERY SET OF SUPPORTS AND PLACE STONE IN THE OPENING OVER GEOTEXTILE.
 - KEEP SILT FENCE TAUT AND SECURELY STAPLE TO THE UPSLOPE SIDE OF UPRIGHT SUPPORTS. EXTEND GEOTEXTILE UNDER 2x4.
 - WHERE TWO SECTIONS OF GEOTEXTILE ADJOIN: OVERLAP, FOLD, AND STAPLE TO POST IN ACCORDANCE WITH THIS DETAIL. ATTACH LATHE.
 - PROVIDE A MASTIC SEAL BETWEEN PAVEMENT, GEOTEXTILE, AND 2x4 TO PREVENT SEDIMENT-LADEN WATER FROM ESCAPING BENEATH SILT FENCE INSTALLATION.
 - SECURE BOARDS TO PAVEMENT WITH 400 5 INCH MINIMUM LENGTH NAILS.
 - REMOVE ACCUMULATED SEDIMENT AND DEBRIS WHEN BULGES DEVELOP IN SILT FENCE OR WHEN SEDIMENT REACHES 25% OF FENCE HEIGHT. REPLACE GEOTEXTILE IF TORN. MAINTAIN WATER TIGHT SEAL ALONG BOTTOM. REPLACE STONE IF DISPLACED.

MARYLAND STANDARDS AND SPECIFICATIONS FOR SOIL EROSION AND SEDIMENT CONTROL	
U.S. DEPARTMENT OF AGRICULTURE NATURAL RESOURCES CONSERVATION SERVICE	2011
MARYLAND DEPARTMENT OF ENVIRONMENT WATER MANAGEMENT ADMINISTRATION	



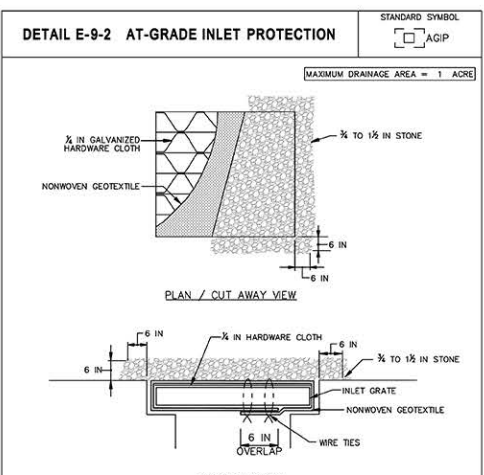
- CONSTRUCTION SPECIFICATIONS**
- INSTALL 2 1/2 INCH DIAMETER GALVANIZED STEEL POSTS OF 0.095 INCH WALL THICKNESS AND SIX FOOT LENGTH SPACED NO FURTHER THAN 10 FEET APART. DRIVE THE POSTS A MINIMUM OF 36 INCHES INTO THE GROUND.
 - FASTEN 9 GAUGE OR HEAVIER GALVANIZED CHAIN LINK FENCE (2 1/2 INCH MAXIMUM OPENING) 42 INCHES IN HEIGHT SECURELY TO THE FENCE POSTS WITH WIRE TIES OR HUG RINGS.
 - FASTEN WOVEN SILT FILM GEOTEXTILE AS SPECIFIED IN SECTION H-1 MATERIALS, SECURELY TO THE UPSLOPE SIDE OF CHAIN LINK FENCE WITH TIES SPACED EVERY 24 INCHES AT THE TOP AND MID SECTION. EMBED GEOTEXTILE AND CHAIN LINK FENCE A MINIMUM OF 8 INCHES INTO THE GROUND.
 - WHERE ENDS OF THE GEOTEXTILE COME TOGETHER, THE ENDS SHALL BE OVERLAPPED BY 6 INCHES, FOLDED, AND STAPLED TO PREVENT SEDIMENT BY PASS.
 - EXTEND BOTH ENDS OF THE SUPER SILT FENCE A MINIMUM OF FIVE HORIZONTAL FEET UPSLOPE AT 45 DEGREES TO THE MAIN FENCE ALIGNMENT TO PREVENT RUNOFF FROM GOING AROUND THE ENDS OF THE SUPER SILT FENCE.
 - PROVIDE MANUFACTURER CERTIFICATION TO THE INSPECTION/ENFORCEMENT AUTHORITY SHOWING THAT GEOTEXTILE USED MEETS THE REQUIREMENTS IN SECTION H-1 MATERIALS.
 - REMOVE ACCUMULATED SEDIMENT AND DEBRIS WHEN BULGES DEVELOP IN FENCE OR WHEN SEDIMENT REACHES 25% OF FENCE HEIGHT. REPLACE GEOTEXTILE IF TORN. IF UNDERMINING OCCURS, REINSTALL CHAIN LINK FENCING AND GEOTEXTILE.

MARYLAND STANDARDS AND SPECIFICATIONS FOR SOIL EROSION AND SEDIMENT CONTROL	
U.S. DEPARTMENT OF AGRICULTURE NATURAL RESOURCES CONSERVATION SERVICE	2011
MARYLAND DEPARTMENT OF ENVIRONMENT WATER MANAGEMENT ADMINISTRATION	



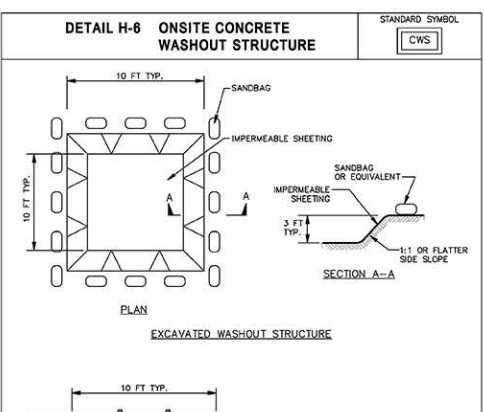
- CONSTRUCTION SPECIFICATIONS**
- USE 42 INCH HIGH, 9 GAUGE OR THICKER CHAIN LINK FENCING (2 1/2 INCH MAXIMUM OPENING).
 - USE 2 1/2 INCH DIAMETER GALVANIZED STEEL POSTS OF 0.095 INCH WALL THICKNESS AND SIX FOOT LENGTH SPACED NO FURTHER THAN 10 FEET APART. THE POSTS DO NOT NEED TO BE SET IN CONCRETE.
 - FASTEN CHAIN LINK FENCE SECURELY TO THE FENCE POSTS WITH WIRE TIES.
 - SECURE 10 MIL OR THICKER UV RESISTANT, IMPERMEABLE SHEETING TO CHAIN LINK FENCE WITH TIES SPACED EVERY 24 INCHES AT TOP, MID SECTION, AND BELOW GROUND SURFACE.
 - EXTEND SHEETING A MINIMUM OF 4 FEET ALONG FLOW SURFACE AND EMBED A MINIMUM OF 8 INCHES INTO GROUND. SOIL STABILIZATION MATTING MAY BE USED IN LIEU OF IMPERMEABLE SHEETING ALONG FLOW SURFACE.
 - WHEN TWO SECTIONS OF SHEETING ADJOIN EACH OTHER, OVERLAP BY 6 INCHES AND FOLD WITH SEAM FACING DOWNGRADE.
 - KEEP FLOW SURFACE ALONG DIVERSION FENCE AND POINT OF DISCHARGE FREE OF EROSION. REMOVE ACCUMULATED SEDIMENT AND DEBRIS. MAINTAIN POSITIVE DRAINAGE. REPLACE IMPERMEABLE SHEETING IF TORN. IF UNDERMINING OCCURS, REINSTALL SHEETING.

MARYLAND STANDARDS AND SPECIFICATIONS FOR SOIL EROSION AND SEDIMENT CONTROL	
U.S. DEPARTMENT OF AGRICULTURE NATURAL RESOURCES CONSERVATION SERVICE	2011
MARYLAND DEPARTMENT OF ENVIRONMENT WATER MANAGEMENT ADMINISTRATION	



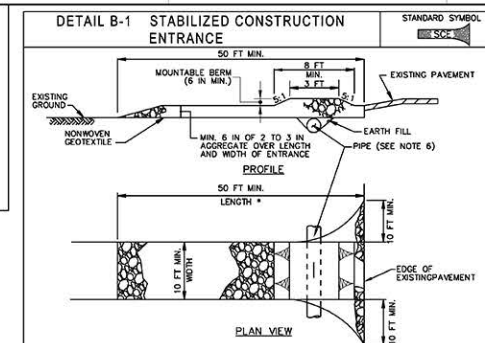
- CONSTRUCTION SPECIFICATIONS**
- USE NONWOVEN GEOTEXTILE AS SPECIFIED IN SECTION H-1 MATERIALS.
 - LIFT GRATE AND WRAP WITH NONWOVEN GEOTEXTILE TO COMPLETELY COVER ALL OPENINGS. SECURE WITH WIRE TIES AND SET GRATE BACK IN PLACE.
 - PLACE CLEAN 3/4 TO 1 1/2 INCH STONE OR EQUIVALENT RECYCLED CONCRETE 6 INCHES THICK ON THE GRATE.
 - STORM DRAIN INLET PROTECTION REQUIRES FREQUENT MAINTENANCE. REMOVE ACCUMULATED SEDIMENT AFTER EACH RAIN EVENT TO MAINTAIN FUNCTION AND AVOID PREMATURE CLOGGING. IF INLET PROTECTION DOES NOT COMPLETELY DRAIN WITHIN 24 HOURS AFTER A STORM EVENT, IT IS CLOGGED. WHEN THIS OCCURS, REMOVE ACCUMULATED SEDIMENT AND CLEAN, OR REPLACE GEOTEXTILE AND STONE.

MARYLAND STANDARDS AND SPECIFICATIONS FOR SOIL EROSION AND SEDIMENT CONTROL	
U.S. DEPARTMENT OF AGRICULTURE NATURAL RESOURCES CONSERVATION SERVICE	2011
MARYLAND DEPARTMENT OF ENVIRONMENT WATER MANAGEMENT ADMINISTRATION	



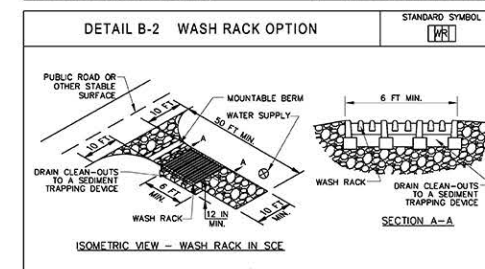
- CONSTRUCTION SPECIFICATIONS**
- LOCATE WASHOUT STRUCTURE A MINIMUM OF 50 FEET AWAY FROM OPEN CHANNELS, STORM DRAIN INLETS, SENSITIVE AREAS, WETLANDS, BUFFERS AND WATER COURSES AND AWAY FROM CONSTRUCTION TRAFFIC.
 - SIZE WASHOUT STRUCTURE FOR VOLUME NECESSARY TO CONTAIN WASH WATER AND SOLIDS AND MAINTAIN AT LEAST 4 INCHES OF FREEBOARD. TYPICAL DIMENSIONS ARE 10 FEET X 10 FEET X 3 FEET DEEP.
 - PREPARE SOIL BASE FREE OF ROCKS OR OTHER DEBRIS THAT MAY CAUSE TEARS OR HOLES IN THE LINER. FOR LINER, USE 10 MIL OR THICKER UV RESISTANT, IMPERMEABLE SHEETING, FREE OF HOLES AND TEARS OR OTHER DEFECTS THAT COMPROMISE IMPERMEABILITY OF THE MATERIAL.
 - PROVIDE A SIGN FOR THE WASHOUT IN CLOSE PROXIMITY TO THE FACILITY.
 - KEEP CONCRETE WASHOUT STRUCTURE WATER TIGHT. REPLACE IMPERMEABLE LINER IF DAMAGED (E.G., RIPPED OR PUNCTURED). EMPTY OR REPLACE WASHOUT STRUCTURE THAT IS 75 PERCENT FULL, AND DISPOSE OF ACCUMULATED MATERIAL PROPERLY. DO NOT REUSE PLASTIC LINER. NET-VACUUM STORED LIQUIDS THAT HAVE NOT EVAPORATED AND DISPOSE OF IN AN APPROVED MANNER. PRIOR TO FORECASTED RAINSTORMS, REMOVE LIQUIDS OR COVER STRUCTURE TO PREVENT OVERFLOWS. REMOVE HARDENED SOLIDS. WASHOUT STRUCTURE SHOULD BE MAINTAINED UNTIL STRUCTURE IS REMOVED.

MARYLAND STANDARDS AND SPECIFICATIONS FOR SOIL EROSION AND SEDIMENT CONTROL	
U.S. DEPARTMENT OF AGRICULTURE NATURAL RESOURCES CONSERVATION SERVICE	2011
MARYLAND DEPARTMENT OF ENVIRONMENT WATER MANAGEMENT ADMINISTRATION	



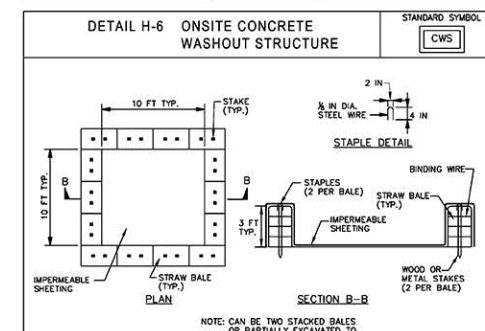
- CONSTRUCTION SPECIFICATIONS**
- PLACE STABILIZED CONSTRUCTION ENTRANCE IN ACCORDANCE WITH THE APPROVED PLAN. VEHICLES MUST TRAVEL OVER THE ENTIRE LENGTH OF THE SCE. USE MINIMUM LENGTH OF 50 FEET (+30 FEET FOR SINGLE RESIDENCE LOT). USE MINIMUM WIDTH OF 10 FEET. FLARE SCE 10 FEET MINIMUM AT THE EXISTING ROAD TO PROVIDE A TURNING RADIUS.
 - PIPE ALL SURFACE WATER FLOWING TO OR DIVERTED TOWARD THE SCE UNDER THE ENTRANCE, MAINTAINING POSITIVE DRAINAGE. PROTECT PIPE INSTALLED THROUGH THE SCE WITH A MOUNTABLE BERM WITH 3:1 SLOPES AND A MINIMUM OF 12 INCHES OF STONE OVER THE PIPE. PROVIDE PIPE AS SPECIFIED ON APPROVED PLAN. WHEN THE SCE IS LOCATED AT A HIGH SPOT AND HAS NO DRAINAGE TO CONVEY, A PIPE IS NOT NECESSARY. A MOUNTABLE BERM IS REQUIRED WHEN SCE IS NOT LOCATED AT A HIGH SPOT.
 - PREPARE SUBGRADE AND PLACE NONWOVEN GEOTEXTILE, AS SPECIFIED IN SECTION H-1 MATERIALS.
 - PLACE CRUSHED AGGREGATE (2 TO 3 INCHES IN SIZE) OR EQUIVALENT RECYCLED CONCRETE (WITHOUT REBAR) AT LEAST 6 INCHES DEEP OVER THE LENGTH AND WIDTH OF THE SCE.
 - MAINTAIN ENTRANCE IN A CONDITION THAT MINIMIZES TRACKING OF SEDIMENT. ADD STONE OR MAKE OTHER REPAIRS AS CONDITIONS DEMAND TO MAINTAIN CLEAN SURFACE. MOUNTABLE BERM, AND SPECIFIED DIMENSIONS. IMMEDIATELY REMOVE STONE AND/OR SEDIMENT SPILLED, DROPPED, OR TRACKED ONTO ADJACENT ROADWAY BY VACUUMING, SCRAPING AND/OR SHEEPING. WASHING ROADWAY TO REMOVE MUD TRACKED ONTO PAVEMENT IS NOT ACCEPTABLE UNLESS WASH WATER IS DIRECTED TO AN APPROVED SEDIMENT CONTROL PRACTICE.

MARYLAND STANDARDS AND SPECIFICATIONS FOR SOIL EROSION AND SEDIMENT CONTROL	
U.S. DEPARTMENT OF AGRICULTURE NATURAL RESOURCES CONSERVATION SERVICE	2011
MARYLAND DEPARTMENT OF ENVIRONMENT WATER MANAGEMENT ADMINISTRATION	



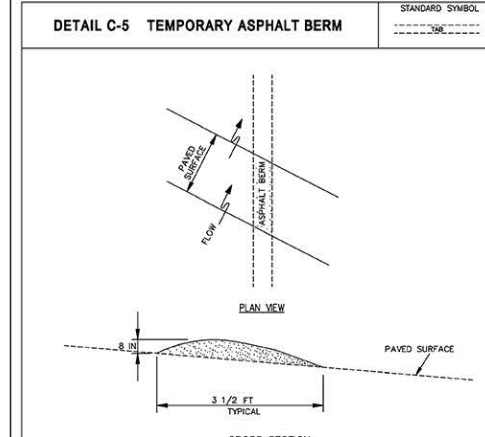
- CONSTRUCTION SPECIFICATIONS**
- USE A WASH RACK DESIGNED AND CONSTRUCTED/MANUFACTURED FOR THE ANTICIPATED TRAFFIC LOADS. CONCRETE, STEEL, OR OTHER MATERIALS ARE ACCEPTABLE. PRE-FABRICATED UNITS SUCH AS CATTLE GUARDS ARE ACCEPTABLE. USE MINIMUM DIMENSION OF 6 FEET X 10 FEET. ORIENT DIRECTION OF RIBS AS SHOWN ON THE DETAIL.
 - INSTALL PRIOR TO, ALONG SIDE OF, OR AS PART OF THE SCE.
 - DIRECT WASH WATER TO AN APPROVED SEDIMENT TRAPPING DEVICE.
 - KEEP AREA UNDER WASH RACK FREE OF ACCUMULATED SEDIMENT. IF DAMAGED, REPAIR OR REPLACE WASH RACK.

MARYLAND STANDARDS AND SPECIFICATIONS FOR SOIL EROSION AND SEDIMENT CONTROL	
U.S. DEPARTMENT OF AGRICULTURE NATURAL RESOURCES CONSERVATION SERVICE	2011
MARYLAND DEPARTMENT OF ENVIRONMENT WATER MANAGEMENT ADMINISTRATION	



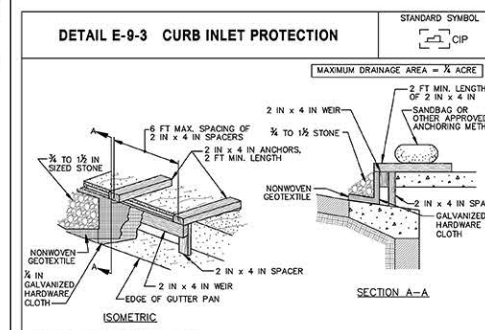
- CONSTRUCTION SPECIFICATIONS**
- LOCATE WASHOUT STRUCTURE A MINIMUM OF 50 FEET AWAY FROM OPEN CHANNELS, STORM DRAIN INLETS, SENSITIVE AREAS, WETLANDS, BUFFERS AND WATER COURSES AND AWAY FROM CONSTRUCTION TRAFFIC.
 - SIZE WASHOUT STRUCTURE FOR VOLUME NECESSARY TO CONTAIN WASH WATER AND SOLIDS AND MAINTAIN AT LEAST 4 INCHES OF FREEBOARD. TYPICAL DIMENSIONS ARE 10 FEET X 10 FEET X 3 FEET DEEP.
 - PREPARE SOIL BASE FREE OF ROCKS OR OTHER DEBRIS THAT MAY CAUSE TEARS OR HOLES IN THE LINER. FOR LINER, USE 10 MIL OR THICKER UV RESISTANT, IMPERMEABLE SHEETING, FREE OF HOLES AND TEARS OR OTHER DEFECTS THAT COMPROMISE IMPERMEABILITY OF THE MATERIAL.
 - PROVIDE A SIGN FOR THE WASHOUT IN CLOSE PROXIMITY TO THE FACILITY.
 - KEEP CONCRETE WASHOUT STRUCTURE WATER TIGHT. REPLACE IMPERMEABLE LINER IF DAMAGED (E.G., RIPPED OR PUNCTURED). EMPTY OR REPLACE WASHOUT STRUCTURE THAT IS 75 PERCENT FULL, AND DISPOSE OF ACCUMULATED MATERIAL PROPERLY. DO NOT REUSE PLASTIC LINER. NET-VACUUM STORED LIQUIDS THAT HAVE NOT EVAPORATED AND DISPOSE OF IN AN APPROVED MANNER. PRIOR TO FORECASTED RAINSTORMS, REMOVE LIQUIDS OR COVER STRUCTURE TO PREVENT OVERFLOWS. REMOVE HARDENED SOLIDS. WASHOUT STRUCTURE SHOULD BE MAINTAINED UNTIL STRUCTURE IS REMOVED.

MARYLAND STANDARDS AND SPECIFICATIONS FOR SOIL EROSION AND SEDIMENT CONTROL	
U.S. DEPARTMENT OF AGRICULTURE NATURAL RESOURCES CONSERVATION SERVICE	2011
MARYLAND DEPARTMENT OF ENVIRONMENT WATER MANAGEMENT ADMINISTRATION	



- CONSTRUCTION SPECIFICATIONS**
- CONSTRUCT BERM ON AN UNINTERRUPTED, CONTINUOUS GRADE.
 - INSTALL BERM TO CONFORM TO CROSS SECTION DIMENSIONS OF A UNIFORM HEIGHT OF 8 INCHES MINIMUM AND APPROPRIATE WIDTH OF 38 FEET.
 - PROVIDE OUTLET PROTECTION AS REQUIRED ON PLAN.
 - COMPACT ASPHALT BERM.
 - REPAIR DAMAGED ASPHALT. REMOVE ACCUMULATED SEDIMENT AND DEBRIS. MAINTAIN POSITIVE DRAINAGE.
 - AFTER REMOVAL OF ASPHALT BERM, RETURN TO ORIGINAL CONDITIONS OR AS SPECIFIED ON APPROVED PLAN.

MARYLAND STANDARDS AND SPECIFICATIONS FOR SOIL EROSION AND SEDIMENT CONTROL	
U.S. DEPARTMENT OF AGRICULTURE NATURAL RESOURCES CONSERVATION SERVICE	2011
MARYLAND DEPARTMENT OF ENVIRONMENT WATER MANAGEMENT ADMINISTRATION	



- CONSTRUCTION SPECIFICATIONS**
- USE NOMINAL 2 INCH X 4 INCH LUMBER.
 - USE NONWOVEN GEOTEXTILE AS SPECIFIED IN SECTION H-1 MATERIALS.
 - NAIL THE 2x4 WEIR TO 9 INCH LONG VERTICAL SPACERS (MAXIMUM 6 FEET APART).
 - ATTACH A CONTINUOUS PIECE OF 1/2 INCH GALVANIZED HARDWARE CLOTH WITH A MINIMUM WIDTH OF 30 INCHES AND A MINIMUM LENGTH OF 4 FEET LONGER THAN THE THROAT OPENING, TO THE 2x4 WEIR, EXTENDING IT 2 FEET BEYOND THROAT ON EACH SIDE.
 - PLACE A CONTINUOUS PIECE OF NONWOVEN GEOTEXTILE OF THE SAME DIMENSIONS AS THE HARDWARE CLOTH OVER THE HARDWARE CLOTH AND SECURELY ATTACH TO THE 2x4 WEIR.
 - PLACE THE ASSEMBLY AGAINST THE INLET THROAT AND NAIL TO 2x4 ANCHORS (MINIMUM 2 FEET LENGTH). EXTEND THE ANCHORS ACROSS THE INLET TAP AND HOLD IN PLACE BY SANDBAGS OR OTHER APPROVED ANCHORING METHOD.
 - INSTALL END SPACERS A MINIMUM OF 1 FOOT BEYOND THE ENDS OF THE THROAT OPENING.
 - FORM OR EQUIVALENT RECYCLED CONCRETE.
 - AT NON-SUMP LOCATIONS, INSTALL A TEMPORARY SANDBAG OR ASPHALT BERM TO PREVENT INLET BYPASS.
 - STORM DRAIN INLET PROTECTION REQUIRES FREQUENT MAINTENANCE. REMOVE ACCUMULATED SEDIMENT AFTER EACH RAIN EVENT TO MAINTAIN FUNCTION AND AVOID PREMATURE CLOGGING. IF INLET PROTECTION DOES NOT COMPLETELY DRAIN WITHIN 24 HOURS AFTER A STORM EVENT, IT IS CLOGGED. WHEN THIS OCCURS, REMOVE ACCUMULATED SEDIMENT AND CLEAN, OR REPLACE GEOTEXTILE AND STONE.

MARYLAND STANDARDS AND SPECIFICATIONS FOR SOIL EROSION AND SEDIMENT CONTROL	
U.S. DEPARTMENT OF AGRICULTURE NATURAL RESOURCES CONSERVATION SERVICE	2011
MARYLAND DEPARTMENT OF ENVIRONMENT WATER MANAGEMENT ADMINISTRATION	

Catherine and Isiah Leggett Math and Science Building
 Montgomery College
 Takoma Park / Silver Spring Campus
 7600 Takoma Avenue
 Takoma Park, MD 20912

USING AGENCY APPROVAL
 NAME: _____ DATE: _____
 TITLE: _____
 DGS APPROVAL
 PROJECT MANAGER: _____ DATE: _____
 CHIEF OF PM&D: _____ DATE: _____

SMITHGROUP
 1700 NEW YORK AVENUE NW
 SUITE 100
 WASHINGTON, DC 20006
 202.842.2100
 www.smithgroup.com

AMT Engineering
 CIVIL ENGINEERS
 800 King Farm Boulevard, 4th Floor
 Rockville, MD 20850
 301-881-2545

Cagley & Associates
 STRUCTURAL ENGINEERS
 6141 Executive Boulevard
 Rockville, MD 20852
 301-881-6000

Mahan Rykhal
 LANDSCAPE ARCHITECTS
 3300 Clipper Mill Road, Suite 200
 Baltimore, MD 21211
 410-235-6001

Spexsys
 AV IT SECURITY
 7257 Parkway Drive, Suite 200
 Hanover, MD 21076
 410-712-0303

DWG FILE:
 DRAWN BY:
 CHECKED BY:
 ISSUED FOR: _____ REV. DATE: _____

CONFORMED SET: _____ 19 NOV 2020

SEALS AND SIGNATURES

PROFESSIONAL CERTIFICATION
 I HEREBY CERTIFY THAT THESE DOCUMENTS WERE PREPARED OR APPROVED BY ME, AND THAT I AM A DULY LICENSED PROFESSIONAL ENGINEER UNDER THE LAWS OF THE STATE OF MARYLAND.
 MICHAEL C. WYCHULIS, P.E.
 LICENSE NO. 32551 EXPIRATION DATE: 01/06/22



SHEET TITLE
EROSION AND SEDIMENT CONTROL DETAILS

MCDPS SC SHEET 5 OF 7
 PROJECT NUMBER: _____ SHEET NUMBER: _____

C-06

NOTE TO THE CONTRACTOR: "MAINTENANCE OF EROSION AND SEDIMENT CONTROL SHALL BE STRICTLY ENFORCED"
 THIS PLAN IS FOR EROSION & SEDIMENT CONTROL PURPOSES ONLY.

X:\ROCKVILLE\17-2946-001 - MONTGOMERY COLLEGE (MATH ANS) CAD\06-CEE-17946001.DWG, 11/03/2020 9:16 AM, ISOGAN
 Plot Date: 6/25/2019 10:42:09 AM

