

The Next Phase of the Catherine and Isiah Leggett Math and Science Building

Takoma Park / Silver Spring Campus

May 26, 2020

Welcome Remarks

Mr. Josh Lasky
Managing Director and Chief Strategist
LINK Strategic Partners

Dr. Brad Stewart
Vice President and Provost, Takoma Park / Silver Spring Campus
Montgomery College

Meeting Agenda

1. Current Construction Project Status
 - COVID-19 Operating Procedures
 - Abatement
 - Noise Mitigation Plan Overview
2. Upcoming Construction Project Activities
 - Demolition & Utilities Update

Barton Malow COVID-19 Operational Procedures

Barton Malow has a detailed company wide action plan to address the current pandemic

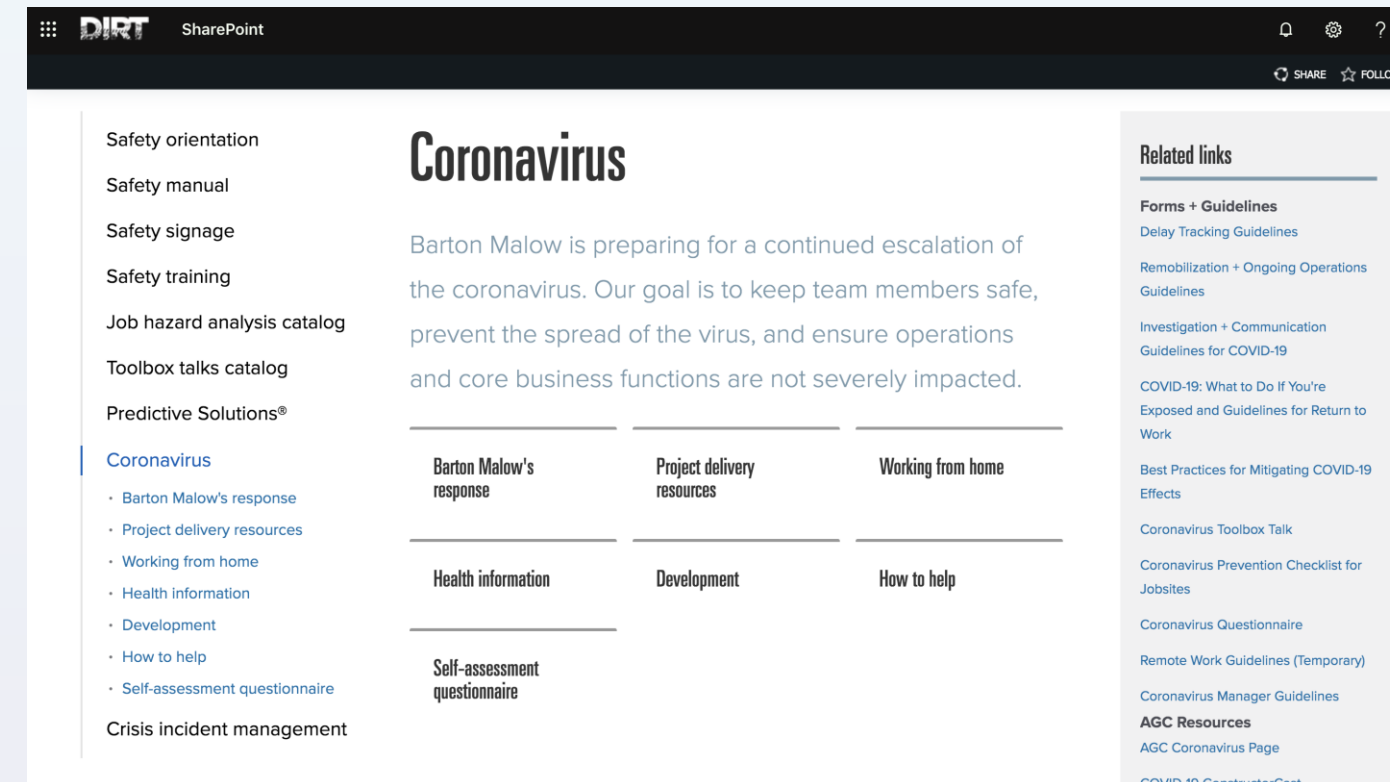
Barton Malow is committed to maintaining a healthy working atmosphere on site and will stay flexible to rapidly evolving guidelines.

Barton Malow Plan follows CDC Guidelines

- Prior to working on site, all workers are required to complete a self-assessment including the following:
 - Temperature of less than 100.4 degrees
 - Complete a questionnaire

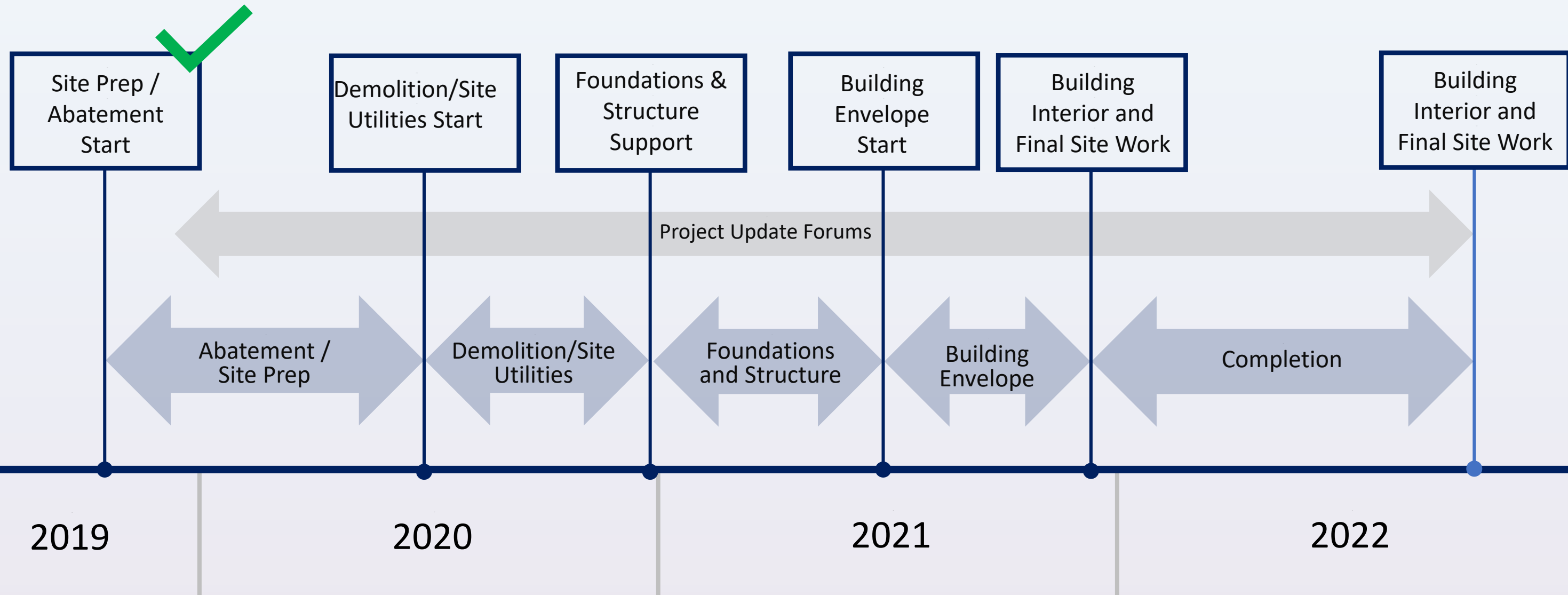
Social Distancing Measures

- 6' separation at daily foreman meetings
- Smaller group safety orientation meetings held more often than usual
- All work surfaces (i.e.: tables, chairs) cleaned following the meeting
- Cleaning of portable toilets increase to 2x week – on site staff provided with bleach and cleaners
- Face to Face meetings held to a minimum – video meetings encouraged
- Workers to maintain 6' separation when working
 - Masks required if less than 6' apart
- No congregation for lunch (ie no lunch room)
- Should a worker report illness after leaving site, a site investigation will be completed

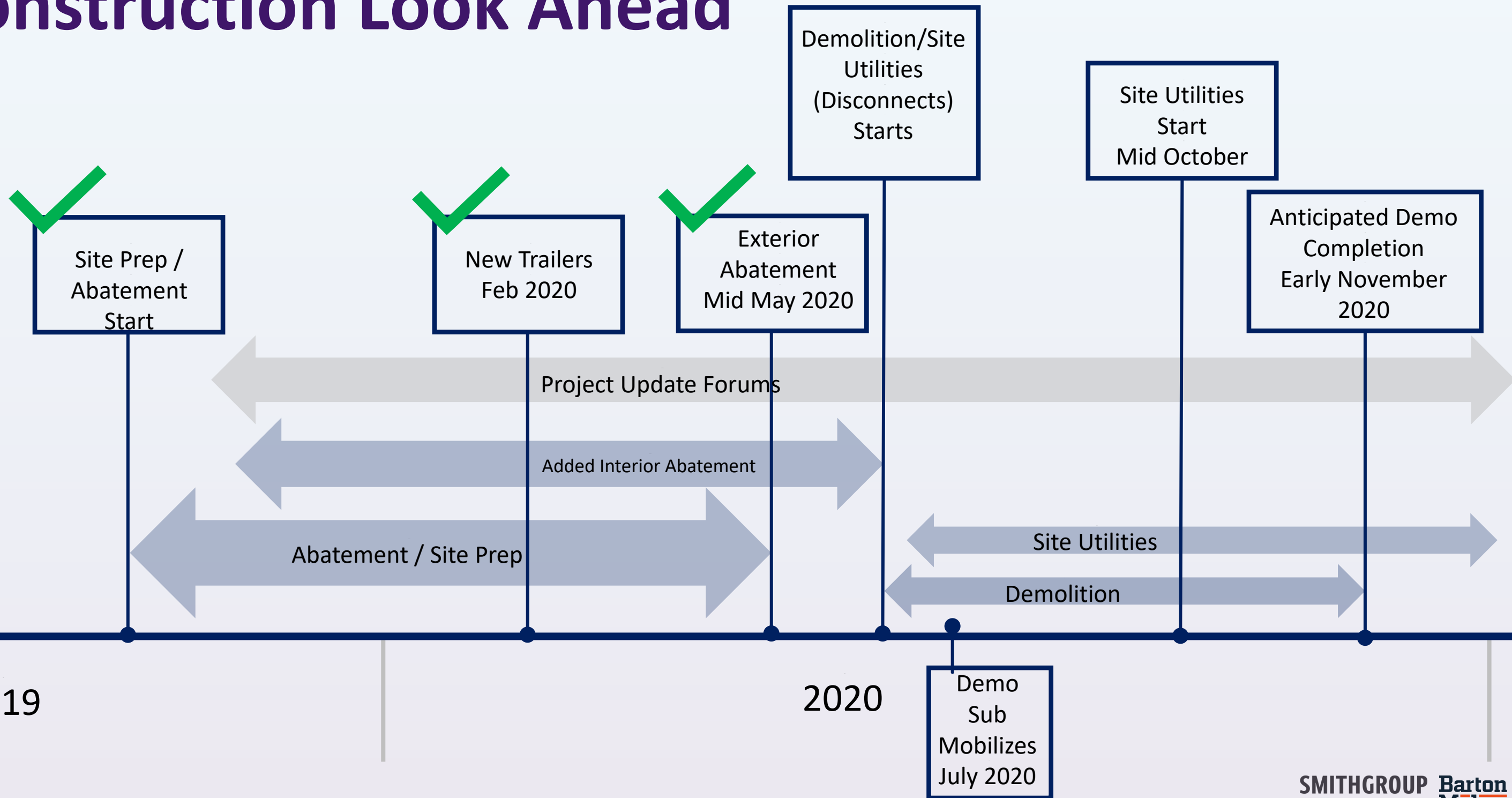


Construction Overview Timeline

Looking Ahead



Construction Look Ahead



2019

2020



Perimeter Fencing with Rain Screen

Abatement Overview

- ✓ Interior Abatement Complete
- ✓ Exterior Work Complete
 - ✓ Transite Panels
 - ✓ Caulk around Windows
- Final Reports Received. Reports to be posted on Project Website after Review
- Additional hazardous materials discovered in and around Falcon Hall
 - Abatement underway – anticipated completion June 2020

Abatement Progress Photos



Exterior Following Abatement



Exterior Window Removal



Containment Area at Indoor track

Construction Activity Review

1. ✓ Abatement Continues
 - ✓ Work Completed
 - ✓ Interior Science South
 - ✓ Third and Second floor and basement abatement complete
 - ✓ First floor complete
 - ✓ Interior Falcon Hall: Start: End of January
 - ✓ Estimated Exterior Abatement Durations
 - ✓ Interior Complete
 - ✓ Exterior (transite panels) Complete
2. Demolition and Utility Work to begin in July 2020

Building Demolition Guidelines

- BMC on site staff: 3 – 6 people
- Demolition Vendor
 - Staff: 8 – 12 people
 - Equipment: front end loader, dump trucks, backhoe, jackhammer, sweeper, hoses with mist attachment, fuel truck, maintenance vehicles
- No Parking on Site
- No Parking in Neighborhood (zero tolerance policy)
- Typical Working hours 7 AM – 5:00PM (Monday – Friday)
- No Traffic on Takoma Avenue

General Work Sequence

1. Install Sediment Erosion Controls
 - Prevent Dirt and Water Migration from the Site and Tree Protection
2. Approval By Inspector
 - Site Demolition Contractor Mobilizes
4. Check all Utilities are Disconnected
5. Demolition Commences
6. Demolition Nearing Completion
 - Start Underground Utilities

Front End Loader



Back Hoe



Silt Fence



Wheel Wash

Noise Mitigation Plan

Plan Provides Evidence of Steps Being Taken to Minimize Noise

PROCESS:

- Application to Montgomery County Department of the Environment
- Put Measures into Action
 - Slamming on tailgate is prohibited – Orientation, Pre Task Planning, Observation
 - Site logistics arranged to limit back up beeping alarm – Orientation, Planning, Observation
 - Maximize use of electrical equipment to reduce noise – Orientation, Planning
 - Saw Cut concrete / asphalt to minimize the use of jackhammering – Pre Task Planning
 - Eliminate unnecessary equipment idling - Pre Task Planning, Observation
 - Equipment Maintenance checks daily - Pre Task Planning , Observation
 - Equipment placed out of Service until replaced or repaired

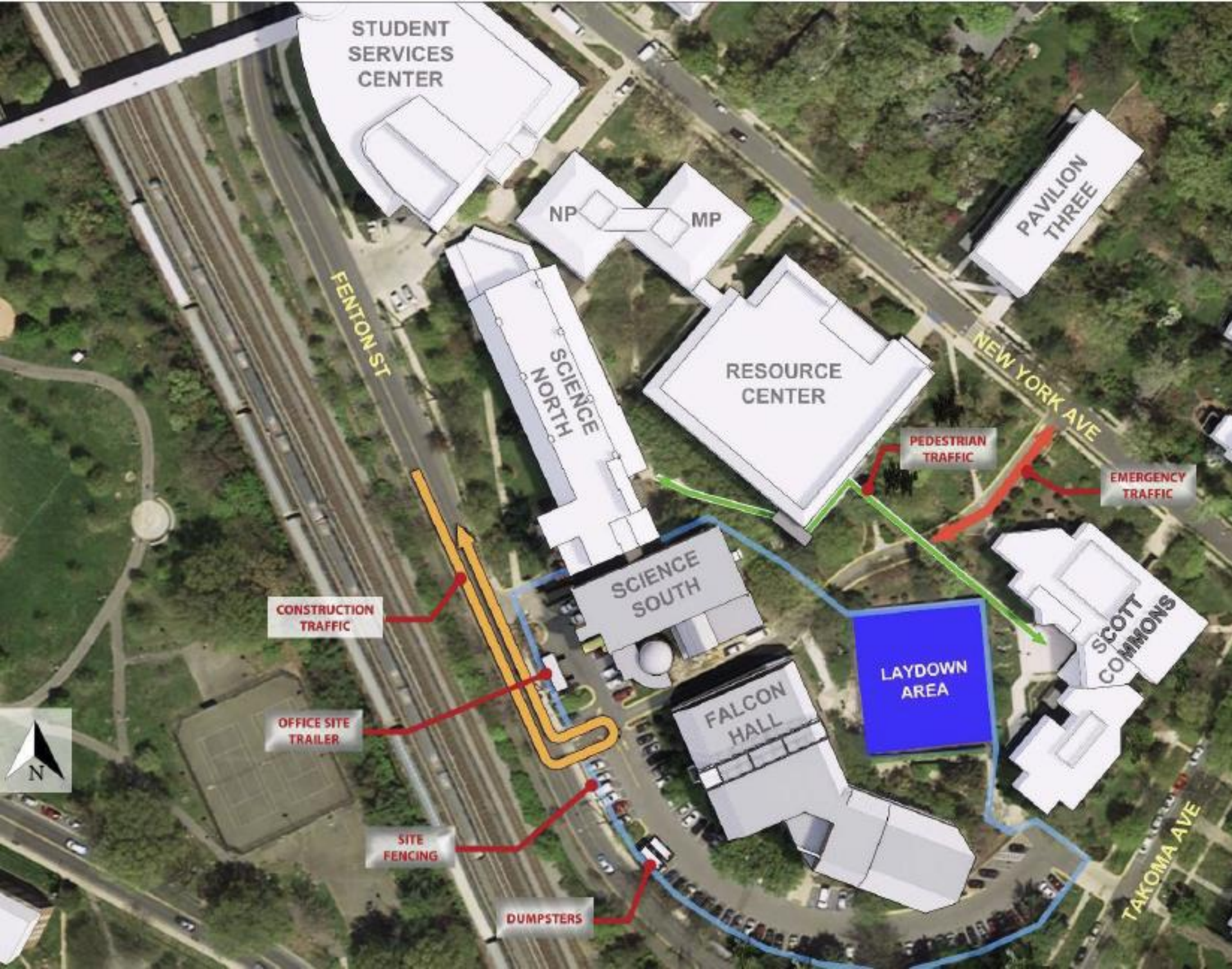
Site Logistics for Building Demolition

Site Logistics



Key

- Construction Traffic Route
- Temporary Chain Link Fence
- Pedestrian Walkways
- Fire Department / Emergency Vehicle Route



Key

-  Construction Traffic Route
-  Temporary Chain Link Fence
-  Pedestrian Walkways
-  Fire Department / Emergency Vehicle Route





Key

- Construction Traffic Route
- Temporary Chain Link Fence
- Pedestrian Walkways
- Fire Department / Emergency Vehicle Route



Key

-  Construction Traffic Route
-  Temporary Chain Link Fence
-  Pedestrian Walkways
-  Fire Department / Emergency Vehicle Route



Key

-  Construction Traffic Route
-  Temporary Chain Link Fence
-  Pedestrian Walkways
-  Fire Department / Emergency Vehicle Route

Employee Parking

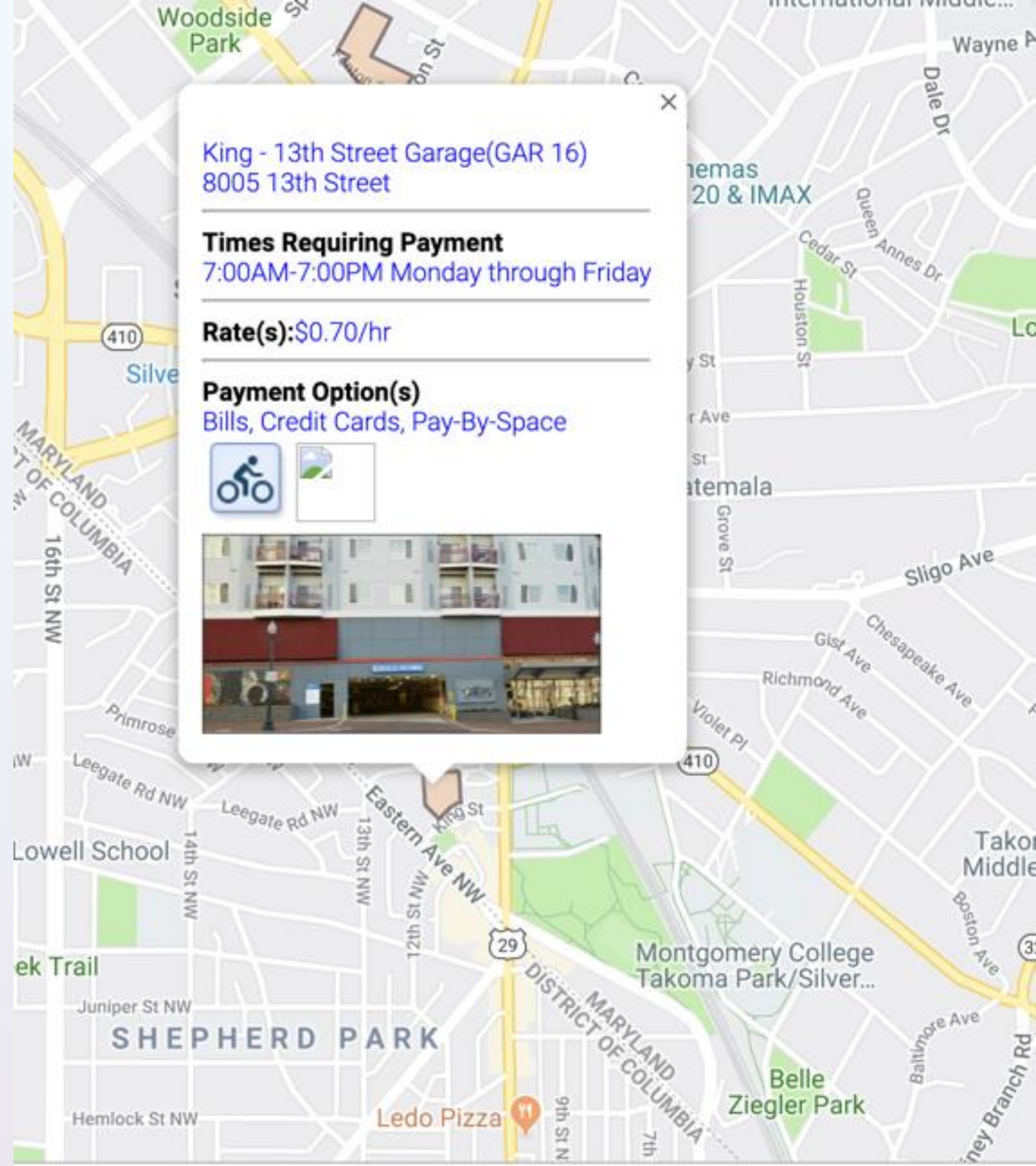
During abatement phase

- employee parking will be within a fenced area

For remaining phases, limited onsite parking will be provided, but Employees are encouraged to use public transportation.

Contractors will park in public parking as indicated here:

<https://www2.montgomerycountymd.gov/gisparking/parkingpublicmap.htm>



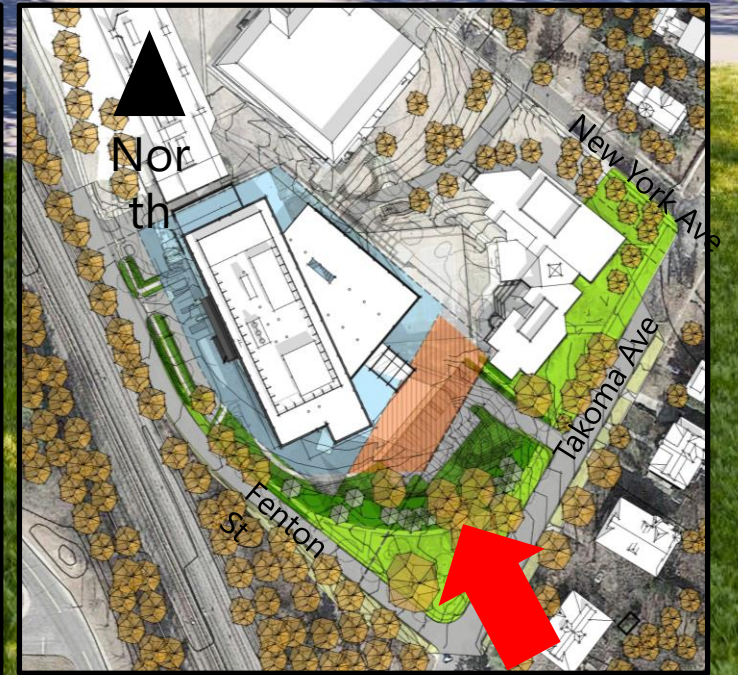
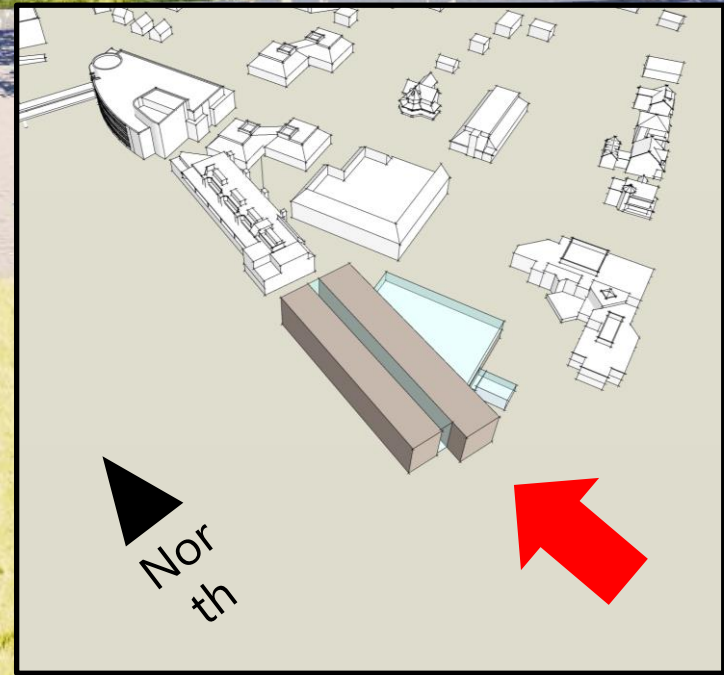
Existing & new trees are transparent to provide unobstructed view of building



Fenton St.

Takoma Ave

Current Approach
VIEW FROM TAKOMA &
21 FENTON



Engagement



HOTLINE
800-879-9879



SCHEDULED MEETINGS BY APPOINTMENT

Virtual Meetings



WEBSITE
montgomerycollege.edu/tpss-design



PROJECT EMAIL
community@montgomerycollege.edu



MEETING SCHEDULE
REGULAR PROJECT
UPDATE FORUMS

Look forward to our

Next Project Updates

Tree / Landscape Design Overview: Coming Soon

SMITHGROUP
LINK STRATEGIC PARTNERS

Barton
Malow

MC MONTGOMERY
COLLEGE