

Fall 2011

the magazine for montgomery college alumni and friends

insights



The Right Formula

MONTGOMERY COLLEGE OPENS NEW SCIENCE CENTER

Midas Touch + Celebrating Science + Hidden Treasures

From the Alumni Association President

Several years ago, I walked through the Rockville Campus's science buildings, which were showing four decades of wear. This summer, a state-of-the-art science center became the new home to Rockville's science and engineering programs. That building is open with help from Alumni Association members: many of you gave to the building fund; others worked with elected officials to keep a long planning and construction effort on track. Read about some of the building's features in this issue of *Insights*, and take pride in what you've given the College.

You'll also see that the College has adopted a new mission statement. Susan Fisher '91 represented you in this effort to chart MC's course in service to our community's students. She brought good experience to the task. Earlier, she helped the Association restate its own mission, so this is a good time for a tour of the three main ways in which we serve and represent you—our members.

We **build relationships** by providing benefits, such as free continuing education classes and business discounts, to Association members. We develop chapters to help you reconnect with past students in your field of study, and to identify internship and mentoring opportunities for those following after you. Helen Youth, a retired professor who coordinates these programs, wants help with this. If you have an interest in networking opportunities within your major, consider pitching in.

We **celebrate noteworthy alumni** not only by printing Class Notes here, but also by highlighting past students' successes with the Milton E Clogg Outstanding Alumni Achievement Awards. It's not too early to recommend the 2013 awardees, so here's a homework assignment: think about your classmates, co-workers, friends, or neighbors whose successes reflect their MC experience—and tell us about them!

And finally, we support **the College's mission** with scholarships for today's deserving students. This year we drew on our reserves to provide extra aid in a hard financial time. Some of those funds helped veterans in MC's Combat2College program. We're constantly looking for ways to raise additional scholarship funds, and we depend on you for most of those dollars. No matter how small a contribution you can make, I hope you'll continue to respond generously when you receive a request from the College's Annual Fund, or make a contribution directly to the Alumni Association. You'll extend a tradition of success to a new generation of MC students.

Thank you for all you do to support Montgomery College!

W. Donald Krueger

Donald Krueger '63
Alumni Association President

insights

MONTGOMERY COLLEGE
ALUMNI ASSOCIATION

- President**
Donald Krueger '63
- Vice President**
Carol Leahy '77
- Secretary**
Susan Fisher '91
- Treasurer**
Jane Smith '76
- Immediate Past President**
Robert F. Costello III '63
- Board of Governors**
Lon Anderson '70
Richard Beall '71
Enoch Bevel '05
Carole Carlson '94
Gabriel Derossier '01
Debra Dwyer '80
Masoud Edalatkhah '06
Sue Flatow '72
Tookie Gentilcore '94
Kelvin Hanson '05
Monique King '10
Joyce Knight '91
Bryan Phukan '04
Anita Neal Powell '79
Julissa Reyes '00
Blake Slavin '77
Gabriel Spiro '08
Etienne Takougang '98
Lori Thomas '99
Constance Tonat, professor emerita
Jorge Urrutia '74
Judith Vaughan-Prather '69
Dr. Lucy Vitaliti '77
Helen Youth, professor emerita
George Zamora '08
- Alumni Coordinator**
John Libby '80
- Alumni Assistant**
Bernice Grossman, Hon. '07
- Office Aide**
Belinda Hester '12

- INSIGHTS**
- Editorial Staff**
Diane Bosser
John Libby '80
- Graphic Designer**
Clint Wu
- Contributing Writers**
Rose Garvin Aquilino
Diane Bosser
Jill Fitzgerald
Elizabeth Homan
Tina Kramer
Regina Smith '12
- Photographer**
Sanjay Suchak
- Vice President, Advancement**
David Sears
- Director, Communications**
Elizabeth Homan

Insights is published twice a year by the Office of Institutional Advancement.

Insights
MC Alumni Office
900 Hungerford Drive, Suite 200
Rockville, MD 20850
alumni@montgomerycollege.edu

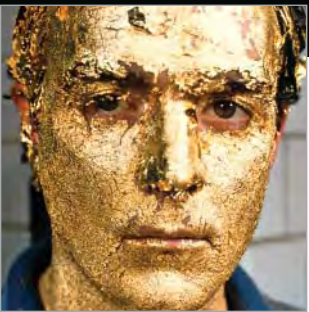
Read *Insights* online:
www.montgomerycollege.edu/insights

Fall 2011

insights

4 The Right Formula

Tour the new \$70-million home to Montgomery County's future scientists and engineers.



8 Midas Touch

A master gilder's illustrious career and mentor relationships



10 Celebrating Science

Events for right brain/left brain edification...all year long



21 Hidden Treasures

Gift ideas that support the College community



About the Cover

Kim Nguyen '12 is photographed using a "controlled atmosphere glove box," which provides a leak-tight environment for work with contamination-sensitive materials. Procedures where low levels of oxygen or moisture are important, such as work with organometallics, alternative energy cells, or hydrophilic chemicals, are typical situations. Photo by Sanjay Suchak.

departments

- 2 News and Views
- 15 MC Couples
- 16 Class Notes
- 17 Faculty Focus
- 17 In Memoriam
- 18 Community Partners
- 19 Bliss Beat
- 22 Then and Now
- 23 Events Calendar
- 24 Campus Scenes

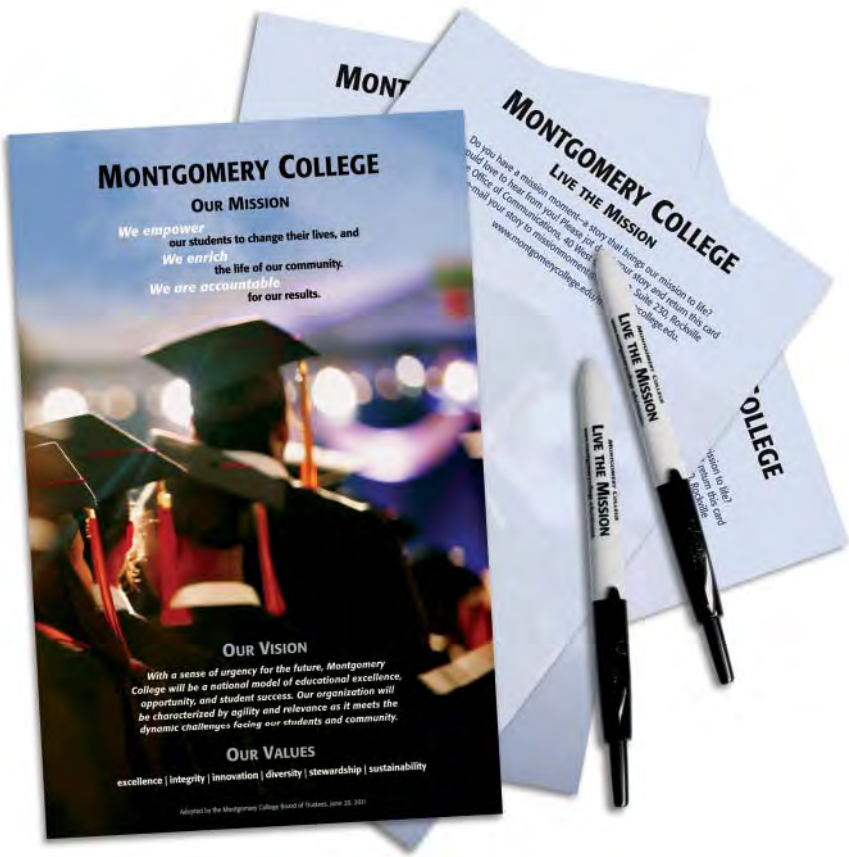


1

New Mission for MC's Future

The Board of Trustees adopted new mission, vision, and values statements for the College. According to Dr. DeRionne Pollard, president, the statements seek to “reflect, in an inspiring way, who we are as an institution and why we are so dedicated to our students and their success.”

www.montgomerycollege.edu/mission



3

Creating a Supportive Environment for LGBT Students

Recent national attention on the problem of bullying and prejudices against lesbian, gay, bisexual, and transgendered students inspired a group of faculty and staff to form MCPride to raise awareness and to educate the community. MCPride collaborated on the development of Making It Better, a statement that supports an inclusive, safe learning environment for all students. Trustees endorsed the statement during LGBT History Month. Watch a video of the statement and other video efforts on the College's YouTube channel.

www.youtube.com/montgomerycollege

Montgomery College
Personal Counseling
www.montgomerycollege.edu/personalcounseling

The Trevor Project
www.thetrevorproject.org

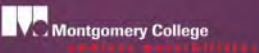
Campus Pride
www.campuspride.org

GLSEN: Gay, Lesbian & Straight Education Network
www.glsen.org



Making It Better

A Message of Hope



Faculty Advisers
Dr. Deborah Stearns
Professor Sonja Fisher
Dr. Loraine Hutchins

Rockville Campus
Germantown Campus
Takoma Park/Silver Spring Campus



From left: U.S. Secretary of Education Arne Duncan, Chair of the Skills for America's Future Advisory Board Penny Pritzker, Maryland Governor Martin O'Malley, Montgomery College President DeRionne P. Pollard, and Discovery President and CEO David Zaslav.

4

Partnerships with Discovery Communications, Accenture Benefit Students

A new partnership with Discovery Communications will help prepare students for the workforce. The partnership will include internships, guest lecturers, resume development, and other programs designed to provide students with marketable job skills. A partnership with Accenture, a global management consulting, technology services and outsourcing company based in Northern Virginia, offers students “Skills to Succeed,” which features Accenture executives as speakers. Students also have access to Job Start 101, a computer-based module with real-world training and tips for succeeding in the workplace.

For complete stories, current news, and events, visit www.montgomerycollege.edu/news.



2

Women's Soccer Wins Nationals

The women's soccer team won the NJCAA Division III national championship, beating Monroe College with a score of 4-0. The tournament's most valuable player award went to Sonia Basma '12. Coach Kelly Wakeman secured the honor of top coach of the tournament.

Photography by Sanjay Suchak

The Right Formula

“Our faculty members are well qualified to do research with their students. Now we have a building that will support them.”

—Dr. Eun-Woo Chang, instructional dean



By Diane Bosser



The new 140,000-square-foot science center features 29 state-of-the-art laboratories: 14 for biology, nine for chemistry, and six for physics/engineering.

Katie Hafner, chemistry major, uses the latest in scientific instrumentation, including this NMR spectrometer.



During the summer swelter, a handful of chemistry and biology students made history: they were first to peer into microscopes and swirl chemical solutions inside the new Science Center at the Rockville Campus. Officially dedicated on September 23, the new 140,000-square-foot science center features state-of-the-art laboratories, recitation rooms, and department offices.

In terms of laboratories (14 for biology, nine for chemistry, and six for physics/engineering), equipment, and undergraduate research possibilities, the new facility raises the bar for two-year institutions and rivals that of many four-year colleges and universities.

“The facilities and laboratory equipment will provide a very authentic learning experience,” said biology major Yves Gomes. Gomes spent his summer doing biological research at Georgetown University, part of a grant-funded undergraduate research program. It was his first experience in a research lab.

“Working alongside a student mentor, several post-docs, and graduate students, I learned how to think more like a

scientist,” said Gomes. “The experience has made me consider pursuing a Ph.D. in biology, instead of an M.D.” He looks forward to taking all his College lab courses in the new center, where, he believes, he will get the hands-on research experience he needs to succeed as a future transfer student.

Dr. Barbara Hoberman, biology department chair and an ardent fan of the new building, says they now have equipment others dream of, including a DNA sequencer to analyze samples, a real-time polymerase chain reaction (PCR), an ultra centrifuge, and fluorescent microscopes to look inside cells.

“We even have a cold walk-in refrigerator lab,” says Hoberman, “for working with microscopic RNA molecules and proteins that are so heat sensitive you need to work with them in a cold environment.”

College leaders viewed the investment in top-notch lab equipment and instructional space as critical to the College’s goal of preparing future engineers and scientists. Situated amid federal agencies, a vibrant health care

sector, and burgeoning technology and life science industries, the College plays a key role in workforce development.

In Montgomery County alone, there are 19 federal facilities and more than 250 biotech companies. Potential for future partnerships for the College and employment opportunities for qualified workers remains strong, especially for those trained in biotech, aerospace engineering, research, information technology, and related professions. Despite the recession, economic forecasters predict an increasing need for skilled workers, especially along the I-270 corridor (“DNA Alley”) and across the state.

The project, from dream to reality, was on the table for more than a decade, according to Rockville Campus Vice President and Provost Judy E. Ackerman. What started as a renovation to existing buildings, Science East (built in 1965) and Science West (built in 1971), morphed into an entirely new idea. The most significant game changer during the planning phase was the persistent tide of students



Surrounded by native plantings, grass terraces, and a refurbished pond, students have direct access to outdoor experimentation and data collection sites.

seeking science, engineering, and mathematics (SEM) courses.

In fall 2009, for example, more than 1,500 students attempted to register for mathematics and science classes but were unsuccessful due to capacity limits. Of those students, 57 percent eventually registered, but nearly half did not succeed in getting the science or mathematics classes they wanted.

But by then, ground was already broken and construction underway; relief was in sight. During the 2011 academic year, with the building nearing completion, the College faced local funding cuts, which threatened the new full-time faculty positions and new staff deemed essential to center operations.

The College mobilized trustees to make the case for preserving funding to the capital and operating budgets. By May, the county officially reconsidered and restored \$4.4 million to the operating budget, giving the College the green light to open the building on time.

Smart Design

As faculty and staff began moving their offices into the new building, landscape crews installed native plantings and grass terraces. The drought-tolerant plants hint at sustainability and eco-friendly features employed inside and out. A greenhouse, for example, uses water from underground cisterns of collected rainwater. The pond, a stormwater management feature, provides water samples for biology students. A rooftop observatory's retractable roof reveals the night sky to astronomy students. A large solar array and high-performance mechanical system serves the center and five other buildings on campus.

Through smart design, the College will save approximately 39 percent in energy costs. It also expects to receive a Leadership in Energy and Environmental Design, or LEED, Gold certification, the highest rating from the U.S. Green Building Council for building design, construction, operations, and maintenance solutions.

Inside, visitors notice first the unusually large atrium fan suspended four stories overhead. Natural lighting

floods the interior from clerestory windows at the topmost reaches. These windows help reduce the need for electrical lighting during the day. On cloudy days and evenings, energy-efficient LED lighting helps illuminate passageways and display cases throughout the building. Interior windows in walls, doors, and even the atrium elevator allow sunlight to reach nearly every occupied area of the building. They also provide glimpses into classrooms, faculty offices, and the outdoors.

A more subtle feature, dubbed "science and technology on display," exposes operational systems in the atrium elevator shaft and key structural elements, such as concrete support beams, for instructional purposes.

Forward Momentum

While the new center solved one part of the SEM programs' capacity problems, additional classroom space is still needed to curtail waitlists. By 2015 renovations to the adjacent buildings, Science West and Science East, will be completed. The three buildings, including the new science center, will connect via hallways

and walkways. Instructional Dean Eun-Woo Chang says the completed complex will play an important role in achieving ambitious goals: to double the College's SEM enrollments by 2015; improve retention rates; and position MC as a national leader among community colleges for science, technology, engineering, and mathematics (STEM) education.

"Our MC data says less than 10 percent of our students are STEM and computer science majors," says Chang. "We can do better. We've got the best [building and equipment]; now we are accountable for what we do with it."

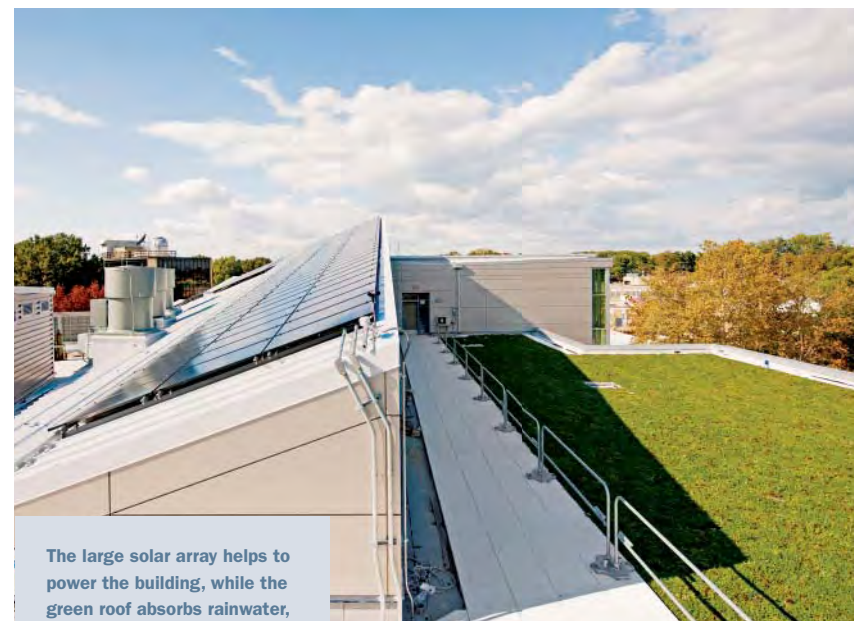
Chang, who holds a Ph.D. in chemistry from the University of California, Los Angeles, came to Montgomery College directly from the National Science Foundation (NSF), where he worked as program director for the Division of Undergraduate Education. In that role, he advocated for community colleges and worked to increase grant funding for community college STEM education.

While the Rockville Campus already boasts successful SEM programs, Chang says the science center will allow departments to set change in motion. Strategic plans include

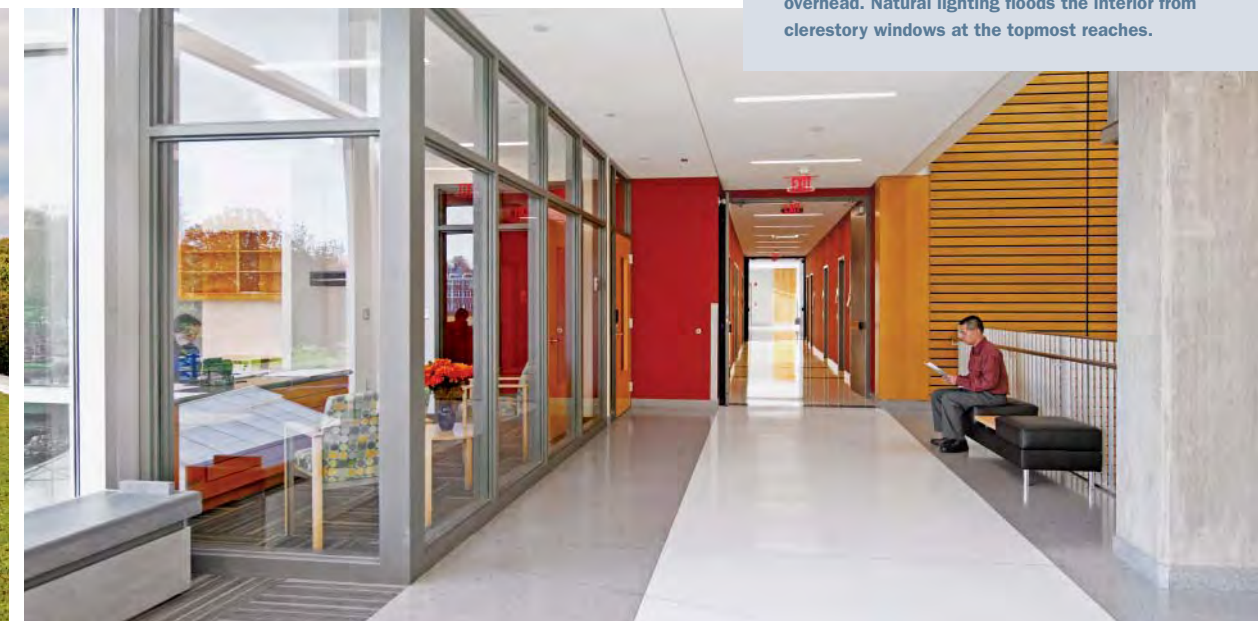
Continued on page 14



Upon entering the science center, visitors will notice the unusually large atrium fan suspended four stories overhead. Natural lighting floods the interior from clerestory windows at the topmost reaches.



The large solar array helps to power the building, while the green roof absorbs rainwater, provides insulation, and helps lower urban air temperatures.



To reduce the need for electrical lighting, natural light is allowed to reach all occupied areas of the building.

BY TINA KRAMER

Nidas Touch



William Adair is an artist, master gilder, frame conservator, and frame historian who began his artistic journey at Montgomery College. Adair pays homage to several of his mentors in an exhibit at the Takoma Park/Silver Spring Campus.

Ron Blunt



"I went back to my teachers constantly. I was never out of their reach. And I continually use them as sounding boards, as my friends, and as my mentors."

—William Adair

Master Craftsman Discovered His Creative Voice at Montgomery College



William Adair '68 is a master gilder, frame conservator, and frame historian who cut his creative teeth as an art student at

Montgomery College.

"I got my first 'A' in art in high school, and that was an indication to me that someone—one of my teachers—thought that I was exceptional So [I began my art career] at Montgomery College," said Adair.

He started off with advertising art, studying with "some really good teachers" who steered him in the right direction. "Allan Marsh was an art history teacher and artist who talked about materials and techniques and the ancient Renaissance world that I knew nothing about," Adair recalled.

"Joan Rosenstein, my design teacher, tried to get me on course in terms of thinking about art as a career. And then Blaine Larson-Crowther, my drawing

teacher, taught me that the most important thing an artist can do is to draw—constantly draw—so I adopted that as my daily routine."

Adair transferred to the University of Maryland, where he "launched into [art] as a serious endeavor—as a choice of what I wanted to do with my life."

Adair pays homage to his mentors in "Reflections: Mentor and Protégé," an exhibit at the Cultural Arts Center gallery on the Takoma Park/Silver Spring Campus. The exhibit, which continues through December 16, is a major retrospective of his art. It also features the work of several mentors, including Montgomery College art professors Rosenstein and Ellen Gelman.

Henry Niese, a mentor at the University of Maryland whose work is featured in the exhibit, discouraged Adair from going to graduate school. "He told me that my work was so developed that I should really just go and open up a studio," said Adair. "He told me, 'Your education should be going to museums and looking.'"

Niese first introduced Adair to gold leaf, but it was as an apprentice to master artisan Oliver Anderson at the Smithsonian's National Portrait Gallery that Adair learned the foundation skills for his lifetime obsession.

In 1975 he received a grant from the Smithsonian to travel to Europe and learn about tools and techniques from the few remaining master gilders working in the Renaissance tradition.

After 10 years at the National Portrait Gallery, Adair founded Gold Leaf Studios in 1982, a Washington, D.C. gilding,

Continued on page 13

William Adair,
Vanitas Futilitumas,
mirror, oil and canvas,
66 x 35 in., 1991



CELEBRATING SCIENCE

ALL YEAR LONG



Harry St. Ours



Patricia Johannsen



Harry St. Ours

COLLEGEWIDE EVENTS
SHINE LIGHT ON
INTERSECTIONS OF
ART AND SCIENCE

To celebrate the opening of the Science Center at the Rockville Campus, Montgomery College presents an ongoing series of public programs entitled, “Intersections: Where Art Meets Science.”

“Because the disciplines of art and science share so many characteristics, we are bringing artists, scientists, and our whole community together to celebrate human creativity,” said Dr. Deborah Preston, instructional and college dean for the arts.

“What can an artist do that does not require an element of physics, chemistry, or many times, biology? How many scientific discoveries have resulted from

creative impulses as much as from the scientific process? What would the world be like without the sense of grace and form that architects and engineers use to create beautiful bridges, buildings, ships, parks, and the thousands of things we see and use daily?” said Preston.

Check the schedule of “Intersections” events below, and be sure to join us for a special lecture series, as well as science-themed exhibits and performances, most of them free. Be sure to visit the College’s online calendar for frequent updates.

 www.montgomerycollege.edu/calendar

INTERSECTIONS WHERE ARTS MEETS SCIENCE

PUBLIC LECTURES

**CONSIDERING THE INTERSECTIONS:
BACH, ESCHER, GÖDEL, AND EISENBERG**
Wednesday, January 25, noon–1 p.m.
Dr. Harold Williams, planetarium director,
Montgomery College
101 CF, The Morris and Gwendolyn Cafritz
Foundation Arts Center
Takoma Park/Silver Spring Campus
240-567-5417

**MAPPING AND ART: THE USE OF MAPS
AND TECHNOLOGY IN PROCESS-BASED ART**
Thursday, February 16, 7 p.m.
Michael Iacovone, photographer, installation
artist, video artist, mapmaker
101 CF, The Morris and Gwendolyn Cafritz
Foundation Arts Center
Takoma Park/Silver Spring Campus
240-567-5417

**AMERICAN ARTIST ARTHUR DOVE AND
WEATHER MAPS: THE ABSTRACT GRAPHICS
OF METEOROLOGY**
Thursday, March 8, 4–5 p.m.
Dr. Rachael Z. DeLue, associate professor of
art and archaeology, Princeton University
101 CF, The Morris and Gwendolyn Cafritz
Foundation Arts Center
Takoma Park/Silver Spring Campus
240-567-5417

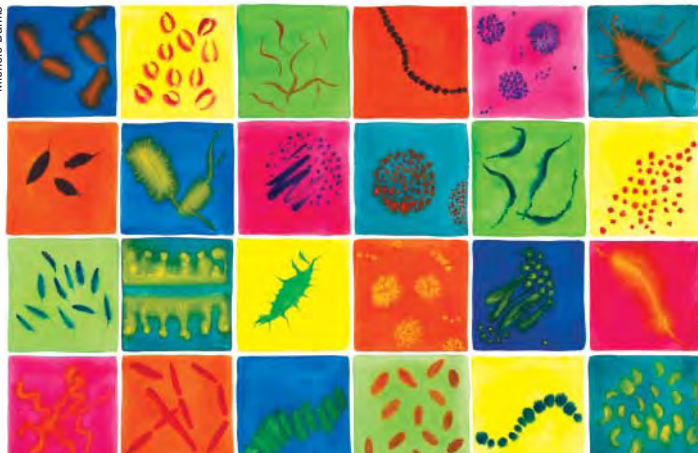
**ON OPTICS AND ART:
FROM BRUNELLESCHI TO CÉZANNE TO ME**
Thursday, April 5, 4–5 p.m.
David Carter, associate professor of art,
Montgomery College
Music Recital Hall, Rockville Campus
240-567-5417

**THE ALCHEMIST’S TREE:
PICTURING METAPHORS FROM SCIENCE**
Thursday, April 19, 7–8 p.m.
Gregory Vershbow, photographer, writer,
experimental scientist
101 CF, The Morris and Gwendolyn Cafritz
Foundation Arts Center
Takoma Park/Silver Spring Campus
240-567-5417

**THE SCIENCE OF SOUND:
ON THE MUSIC AND TECHNOLOGY OF THEREMINS**
Thursday, April 26, 7–8 p.m.
Arthur Harrison, Harrison Instruments,
maker and designer of theremins. Followed by
a short theremin concert
Music Recital Hall, Rockville Campus
240-567-5417

Continued on page 12

Michele Banks



Martha Vaughan



Joseph Smolinski



INTERSECTIONS WHERE ARTS MEETS SCIENCE

Continued from page 11

ART EXHIBITIONS

INTERSECTIONS: WHERE ART MEETS SCIENCE

Through December 21
Works created by College faculty from all three campuses to celebrate the opening of the Science Center at the Rockville Campus
BlackRock Center for the Arts
12901 Town Commons Drive
Germantown, MD 20874
301-528-2260

EXPERIMENTS: WHERE ART MEETS SCIENCE

CAT Faculty and Staff Exhibition

Through December 23
New works inspired by the intersection of art and science from the faculty and staff of the computer

graphics, graphic design and illustration, and photography, television, and radio programs
Communication Arts Technologies (CAT) Gallery
Rockville Campus
240-567-7521

FROM HERE ON...

Through January 2
Recent drawings that question technology and envision a future of the "natural world" by New Haven artist Joseph Smolinski
Open Gallery, The Morris and Gwendolyn Cafritz Foundation Arts Center
Takoma Park/Silver Spring Campus
240-567-5821

Montgomery College Students Are Fired Up to Learn

- 37,000 full-time students attended Montgomery College last year.
- 15,000 received financial aid or scholarships.

Help students pursue their passion with your generous gift today.

www.montgomerycollege.edu/onlinegiving

Make your tax deductible gift (**NEW!** recurring gift option) online or by check to the Montgomery College Foundation, 900 Hungerford Dr., Suite 200, Rockville, MD 20850.

For additional information, contact Kathy Stevens, director of annual giving, 240-567-4108 or kathy.stevens@montgomerycollege.edu.



Midas Touch

Continued from page 9

conservation, and framing workshop with an extensive antique frame collection spanning centuries of Western tradition. Over the years, the studio has completed architectural gilding projects in such prestigious buildings as the U.S. Treasury, the Metropolitan Club, St. John's Church on Lafayette Square, and the U.S. Department of State diplomatic reception rooms.

In 1991 the American Academy in Rome recognized Adair's achievements by awarding him the Rome Prize in Design, which allowed him to spend six months studying the origin of frame design. In Rome he shared a studio with his wife

Kay Jackson (also featured in the exhibition), where he taught her water gilding and panel painting techniques.

Today Adair conducts gilding workshops nationwide, lectures, and writes about frame history and conservation. He is founding director of the International Institute for Frame Study, and a founding member of the Society of Gilders.

Throughout his career, he has never lost contact with his mentors: "I went back to my teachers constantly. I was never out of their reach. And I continually use them as sounding boards, as my friends, and as my mentors." ■

Adair uses traditional techniques and materials for handmade gilded objects.



Courtesy Gold Leaf Studios

Photos courtesy William Adair



Left: William Adair, *The Trestle*, oil on canvas, 30 x 24 in., 1973

Right: Mitchell Jamieson, *Mexico*, watercolor, 19.75 x 14.5 in., 1940

Reflections: Mentor and Protégé



Charlie Steichter

William Adair (left) stretching a canvas with his mentor, Henry Niese, in 1971 at the Avant-garde Festival in New York City.

In the exhibit, "Reflections: Mentor and Protégé, The Work of William B. Adair and His Mentors," Adair's art is paired with works created by his former professors at Montgomery College and the University of Maryland, demonstrating how mentors and students influence each other's artwork. The mentor-artists in the exhibit include Joan Rosenstein, Frank Bunts, Henry Niese, Mitchell Jamieson (deceased), Ellen Gelman (deceased), and Kay Jackson.

The exhibit focuses on three different areas: how the relationship between mentor and student affects artwork, how a painting framed in different ways affects the viewer's perceptions, and how the mirror is the framer's purest art form. Examples of Adair's gilding are also on display.

As part of the exhibit, Adair presented a lecture on gilding, as well as a master gilding workshop for Montgomery College art professors who wanted to incorporate this skill into their courses.

Montgomery College Television's Joseph E. Thompson produced a 50-minute documentary about Adair and his work, which is available for viewing on the College's YouTube channel at www.montgomerycollege.edu/reflections. The documentary also runs on Montgomery College Television, cable channel 10, through December.

The Cultural Arts Center is located at 7995 Georgia Avenue, Silver Spring, Md. The exhibit is open Monday through Friday, from 9 a.m. to 4 p.m. through December 16. For more information, call 240-567-5780. For a campus map and directions to the Cultural Arts Center, visit www.montgomerycollege.edu/maps.

Dr. Eun-Woo Chang, instructional dean of science, engineering, and mathematics (SEM), hopes to increase retention in the sciences through new opportunities for students in the well-equipped and expertly designed laboratories.



The Right Formula

Continued from page 7

increasing mentoring and academic coaching, and providing supplemental instruction in key “gateway courses” in engineering, physics, and chemistry.

Developing more undergraduate research opportunities is another key initiative poised for growth. Pointing to data from the Council for Undergraduate Research, a national organization of individual and institutional members representing more than 900 colleges and universities, Chang believes it can become an integral part of the SEM programs at Rockville.

“Studies show improved retention rates of students who are involved in research projects in their first two years of a STEM program,” says Chang. “Our faculty members are well qualified to do research with their students. Now we have a building that will support them.”

Chang and many of the SEM faculty are already applying for external grants to fund their creative ideas to engage students. Biology Professor Aubrey A. Smith, among the first professors to teach in the new building last summer, says Rockville faculty are energized.

“We are excited about the prospect of conducting original research projects in cell and molecular biology,” says Smith, “and having undergraduate students as collaborators and co-authors of publishable results.” ■

Green MC

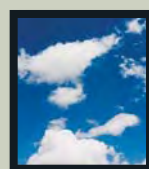
Green is a way of life at MC.

While the College's newest building, the Science Center at the Rockville Campus, is slated to receive the prestigious LEED Gold Certification from the U.S. Green Building Council, many small efforts around the College add up to one big green scene.



► EARTH

Forest conservation efforts include planting drought- and pest-resistant species, which are less dependent on chemicals and watering.



► SKY

By limiting campus lighting to appropriate levels, the College reduces light pollution spillover into neighboring areas and limits light pollution above the horizontal plane (Dark Sky).



► WATER

In addition to conservation efforts, MC minimizes environmental effects of storm water run-off by reducing its impervious surfaces, increasing on-site infiltration, and installing and maintaining storm water structures on each campus.

Plus Montgomery College offers **GREEN EDUCATION** to the community via Green Energy and Sustainability Management courses for business and homeowners; Green Technology for the building and construction trade; opportunities for local business to obtain their Green Business Certification; and LEED CEU courses to help private and public entities maintain LEED certification.

Source: MC's Green Routine. To read more on the College's environmental stewardship and sustainability practices, visit www.montgomerycollege.edu/greenmc.



Did you know...

The College purchases **20–70%*** of its electrical energy from wind power; and it recycles **75%** of waste on new construction projects.

*Montgomery County mandates a minimum purchase of 20% total usage; budget constraints and market conditions determine the amount purchased annually.

MC Couples

Family Portrait

Susan Maldon Stregack and Rollin Fraser are partners in marriage—and in business. Dancing Moose, their Silver Spring studio, provides portrait and event photographs throughout the Washington area. A shared passion for the camera brought them together in 1995 when, as returning adult students, they each took photography courses at the Rockville Campus.

“We met in the darkroom,” says Susan. “Rollin used to help me; he was already an advanced student when I started.”

While Susan focuses on portraiture, Rollin specializes in documentary, or street, photography.

“Street photography is different from photojournalism,” says Rollin. “Photojournalism and editorial work must be newsworthy. Street photographers can shoot whatever catches the eye.”

Pulling out a coffee-table book of Garry Winogrand's work, Rollin points to examples of his favorite photographers: Ansel Adams, David Plowden, Lee Friedlander, Sebastiao Salgado, Stephen McNally, and—Susan agrees—Maxwell Mackenzie.

In addition to possessing photography skills, Rollin became the techie in the family.

“I had never used digital equipment until the fall of 1997. I had to convert Professor Brian Jones' Advanced Photography class with film to digital format. The College staff helped me along the way.”

In 2001 Professor Jones, impressed with Rollin's work, encouraged him to join the MC faculty. Rollin's career as an adjunct professor in VCT (now the Communications Arts Technologies Department) had a rough start: “My second class was cancelled after the September 11 attacks.” But he has since used that momentous and grievous event to teach professional photographers the need to “disconnect themselves from the moment” when capturing emotionally difficult content.

“They're [photos] all like your children—memorable in their own special way.”

—Rollin Fraser



Courtesy Susan Maldon Stregack and Rollin Fraser

Susan Maldon Stregack and Rollin Fraser, who met in photography class, remain focused on their favorite subjects—photos and family.

Susan concurs. She once traveled to Poland to shoot World War II-era concentration camps, which was a difficult subject. In 2005, the couple collaborated with Jones, Professor Jon Goell, and others on Portraits of Life, a College exhibit showcasing Holocaust survivors living in and around Montgomery County. The exhibit was displayed at the Strathmore, then traveled around the state.

Rollin and Susan celebrate their eleventh anniversary this year, but remember their first date as though it was yesterday. Yet when asked about their most memorable photographs, there is some hesitation. “It's hard to say,” Rollin says. “They're [photos] all like your children—memorable in their own special way.”

A daughter and son from former marriages, now adults, both dabbled in photography in younger years, but Susan says they prefer performing to photography. For several years, both children and Susan were active in the Rockville Campus's Summer Dinner Theatre.

Susan and Rollin share a hunch about who will carry on their professional legacy. “Our four-year-old grandson,” says Rollin, “has a toy camera right now.” Who knows what will develop? ■

—Regina Smith

Did you meet at MC? Share your story with Insights readers. Visit “Submit Your News” at www.montgomerycollege.edu/insights.

1950s

Larry Bubes '56, a retired special education instructor, is still active in the field. He is a substitute teacher and has been a swimming instructor for water babies.

1970s

William Cook '72 wrote to recall a memorable MC counselor, Harry Roberts, “who really made a difference in the way I looked at life.”

Bob Frederick '72 is an account executive of the Atlantic/Smith, Cropper and Deeley Insurance firm in Delaware. He has served as Dewey Beach's police commissioner and mayor.

Judy Brubaker '74 recently received *The Washington Post's* 2011 Distinguished Educational Leadership Award in recognition of her work as principal of Spark Matsunaga Elementary School in Germantown.

Nicholas J. Sabia '76 is a retired certified EMT-B and firefighter living in Monroe County, West Virginia. Tending his 17 acres of peaceful land and volunteering at the local fire department keeps him busy.

Steven Barry '79 was promoted to vice president of the Utica Mutual Insurance Company. Barry first joined Utica National in 1986 as a research analyst. He was promoted to director of research in 1997, became the director of research and budget in 2000, and was appointed assistant vice president in 2004. He has also served as vice president of the Utica Mutual Federal Credit Union's board of directors since 1997.

1980s

Joe Campanellie '81 is the founder of Campanellie Portraits in Damascus, which he and his wife, **Mary Jean '72**, have operated for 39 years.

Marcie Lovett '82 published *The Clutter Book: When You Can't Let Go*, a book enabling readers to let go of what they don't need and find room for what they value. She has taught organizing seminars for the College and for Alumni Association members.

Newman Receives 2011 Community Leadership Award



Esther B. Newman '75, founder and executive director of Leadership Montgomery, was named the 2011 Community Leadership Award recipient. This award is given annually by Jewish Women International to one woman for her contributions to the greater Washington community. Newman has grown Leadership Montgomery from a single community leadership program to a nationally recognized model that includes its signature core program, as well as youth, senior, executive, and member programs.

Her past and current community service includes the Montgomery College Board of Trustees Nominating Committee and the Alumni Association's board. Her numerous awards include an honorary MC degree and the Milton F. Clogg Outstanding Alumni Achievement Award.

“At a local level, you get to be more-hands on, and you can see the results of your involvement more directly,” Newman told *Jewish Woman* magazine. “It's also been wonderful to watch people make professional connections and form lasting personal relationships,” she adds. “I just love where I live and love what I do.”

Renate Laine

Minhnga Bui '84 is a preschool teacher in the Fontana Unified School District in California.

Liliane Blom '85, an artist and video producer, was appointed to the City of Rockville Cultural Art Commission. She is president of the Rockville Art League.



Courtesy Edwin Oliver

Dr. Edwin C. Oliver '87 is a licensed psychologist and the director of psychological services in Baltimore at the Baltimore Lab, which is a division of the Lab School

of Washington. He also teaches at Johns Hopkins University and maintains a private practice.

1990s

Francene Jenkins '95, RDMS, RVT, a registered sonographer, writes that her MC education was vital to the development of her 17-year ultrasound career.

Azim Al-Salam '96 has a B.S. in homeland security. He is a graduate advisor with the University of Maryland University College, where he plans to earn an M.S. in nonprofit and association management and an M.B.A.

Wanjin Kim '97 is currently teaching bead making and metalsmithing classes at MC.

Timothy Pritchard '98 is the varsity baseball coach at Northwood High School, where he is a health and physical education teacher.

2000s

Rutie Eckdish '02, a Hebrew instructor at the University of Maryland, has received a Morningstar grant to complete future studies in Hebrew instruction.



Sanjay Suchak

Carolina Peña '07 has been named the executive assistant to the president of Expertech Solutions. She also received the Young Entrepreneur Award from the Maryland Hispanic Business Conference.

DeBoe Has Blueprint For Success



Courtesy Jane DeBoe

Jane R. DeBoe '88, ASID, founded DeBoe Designs, a full service interior design firm, in Washington in 1989, and relocated to

Florida in 1993. She received her B.A. from the University of Arkansas with special education in fabric science. Her firm's awards and recognitions include the Palm Beach Illustrated Dream House Award and the ADEX Gold Award for Design Excellence. She has been featured on HGTV channel's “Designer's Challenge” and CNBC's “Elegance with Ivana Trump.”


George Zamora '08 presented an audio-visual exhibit, “The Aztecs Before the Conquest: Where, When, and How Did They Live?” He recently was elected to the Alumni Association's board of governors.

David Foote '08 is a communications associate at Wells College. He had been a student assistant and intern at the Wells Office of Communications and Marketing.

Laura Starr Levengard '90, a personal trainer, is the author of the forthcoming book, *Exercise for the Masses—Are You Fit to Pray?*

Tell us your story.

Send your updates and photos to alumni@montgomerycollege.edu.

 **Photo Tips:** Set your digital camera to the highest image-quality setting, and send your photo exactly as it comes out of the camera. Attach it as a JPEG file to your e-mail.

Faculty Focus

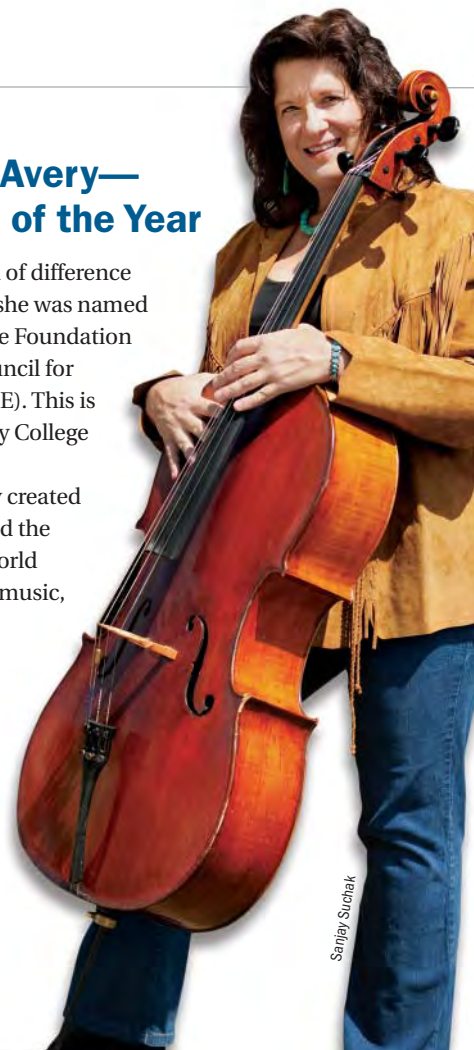
Congratulations to Dawn Avery—2011 Maryland Professor of the Year

Music Professor Dawn Avery makes a world of difference to her music students. So it's no surprise that she was named Maryland Professor of the Year by the Carnegie Foundation for the Advancement of Teaching and the Council for Advancement and Support of Education (CASE). This is the fifth time in eight years that a Montgomery College professor has won the award.

Among her many accomplishments, Avery created the College's world music program; established the World Arts Ensemble; and founded the MC World Arts Festival, a year-long celebration of world music, dance, storytelling, film, and visual arts.

Jessica Flores '11 says it best: “Professor Avery is the hardest-working woman I know, and faces every task with the same amount of passion, professionalism, and genuine love for teaching that separates a good teacher from a great one.”

 Visit www.montgomerycollege.edu/departments/musicrv/worldmusic for more about the MC World Arts Festival.



Sanjay Suchak

Dr. James E. Cronin

April 27, 2011

He taught history at the Rockville Campus from 1970 until his retirement in 2007.

Wade H. Pugh III

April 27, 2011

He taught math at the Rockville Campus from 1998 to 2011.

Judge James S. McAuliffe Jr. '51

April 30, 2011

He was assistant state's attorney for Montgomery County, an elected member of both the Maryland House of Delegates and State Senate, and a recipient of the Milton F. Clogg Outstanding Alumni Achievement Award.

Daniel K. Jenkins

May 16, 2011

He was a swimming pool operator at the Germantown Campus from 2001 to 2011.

Jacques Q. (Jack) Follweiler, Bliss '48

May 21, 2011

Jack Howard Killen, Bliss '50

June 9, 2011

Walter R. Wistermayer, Navy '52

June 28, 2011

He retired in 1989 as director of digital services after a 34-year career with Bell Atlantic (now Verizon).

Joan E. Miller '73

July 7, 2011

She prepared manuscripts for Nobel laureate Julius Axelrod and was a secretary to sociologist Elliot Lebow, author of *Tally's Corner*.

Margot Schumm

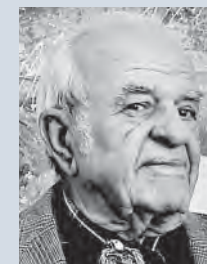
July 19, 2011

She taught chemistry at the Rockville Campus for 26 years until her retirement in 1993.

Ronald H. Buffington

August 3, 2011

He was a building equipment mechanic at the Germantown Campus from 1986 until his retirement in 2010.



Courtesy Hill Printing

Charles O. “Charley” Grigsby Jr., Bliss '42

August 13, 2011

After serving in World War II, he was an entrepreneur in many ventures. He invented Lorraine Cheese, a form of baby swiss, which became the second-largest seller of its type.

Jack Weisenburger, Navy '52

October 14, 2011

Notices listed in Insights are published as obituary information is received.

Students and Alumni Try Out “Speed Mentoring”

Engineering majors joined past MC students pursuing degrees in engineering, computer science, and computer gaming in a Speed Mentoring event at the Universities at Shady Grove.

Recipients of scholarships from the Bethesda Chapter of the Armed Forces Communications and Electronics Association (AFCEA) paired up with staff from AFCEA member companies serving as mentors (including College Trustee Michael Priddy, AFCEA Bethesda’s education vice president).

The event helped students meet representatives from possible future employers. For an hour, they went round-robin—changing mentors or students every five minutes—asking questions about career opportunities, educational plans, resume writing, and interview skills.

AFCEA Bethesda established a scholarship program at Montgomery College in 2007 and this year made a four-year commitment to continue providing scholarships in science, technology, engineering, and mathematics. More than 80 AFCEA Bethesda scholarships have been awarded to MC students. In recognition of their generous support, Montgomery College named the physics, engineering, and geosciences office suite in the new Science Center at the Rockville Campus in AFCEA Bethesda’s honor. ■

—Rose Garvin Aquilino



Sanjay Suchak

In a round-robin format, students spent five minutes with each mentor discussing career opportunities, educational plans, resume writing, and interview skills.



Sanjay Suchak

Michael Priddy (left), Montgomery College trustee and AFCEA Bethesda vice president of education, advises Obidon Bassinan '11.



Courtesy Smithsonian Institution

Bliss School alumni, Bliss Society members, and Bliss Scholarship awardees are invited to join the society’s online group. Search “Bliss Electrical Society” on Facebook.

You could save hundreds of dollars a year on auto insurance.

Did you know that Montgomery College alumni could save up to \$327.96 or more a year on auto insurance?

You may already know that alumni like you can get a special group discount on auto insurance through Liberty Mutual’s Group Savings Plus® program.* But did you know that Liberty Mutual offers many other discounts on both auto and home insurance?*

In fact, you could save up to \$327.96 or more a year on auto insurance alone.**

And you could save even more by insuring your home, as well.



For a free no-obligation rate quote in MD, DC and VA please call Scott LeStrange, Sales Representative at 1-301-881-9300 ext. 51556 or e-mail Scott.LeStrange@Libertymutual.com and mention client #4800. If outside this area please call 1-800-524-9400 or visit www.libertymutual.com/mcaa

*Discounts and credits are available where state laws and regulations allow, and may vary by state. To the extent permitted by law, applicants are individually underwritten; not all applicants may qualify. **Figure based on a February 2008 sample of auto policyholder savings when comparing their former premium with those of Liberty Mutual’s group auto and home program. Individual premiums and savings will vary. Coverage provided and underwritten by Liberty Mutual Insurance Company and its affiliates, 175 Berkeley Street, Boston, MA. A consumer report from a consumer reporting agency and/or a motor vehicle report, on all drivers listed on your policy, may be obtained where state laws and regulations allow. ©2008 Liberty Mutual Insurance Company. All Rights Reserved.

What will your legacy be?



“In my estate planning, I’m giving the gift of education.”

Donna Hoffacker, donor

Charitable Gift Annuity: A Great Return on Your Investment

Simple. Your gift to the Montgomery College Foundation helps students.

Reliable. You receive fixed, regular payments.

Smart. Charitable gift annuity rates are as high as 9.5%.

Montgomery College Foundation • Elana F. Lippa
elana.lippa@montgomerycollege.edu • 240-567-5287

Hidden Treasures

Shiver me timbers! It's that time of the year when beauties and buccaneers be goin' to need more booty. Avast, Montgomery College alumni be churnin' out the mother lode of loot.

Look lively mateys! Montgomery College alumni masters be plugging everything from hornpipes to hearty victuals, including several items from the sweet trade. Whether you want to dress smartly or fancy pieces o' eight, doubloons, or other swanky baubles, our merchants have everything you need from stem to stern.

Laggers and lasses alike can take in treasures from local purveyors, but if ye too lily-livered to swashbuckle the urchins at the mall, you can stay in your quarters and fill your own sea chest by hitting the high surf on the web.

Shake a leg! Go on account for your riches straight away, lest you be thought of as a scurvy miser.



Quartermaster John Libby '80
(alumni coordinator) spies
the treasures purveyed by
Montgomery College alumni.



**Elk Run
Vineyards**

Carol Wilson '73
www.elkrun.com



Uncle Ralph's Cookies

Margaret Wight '72
www.unclealphscookies.com



Mayorga Coffee

Martin Mayorga '97
www.mayorgacoffee.com



Smiles on Wings Store

Usa Bunnag '87
<http://store.smilesonwings.org>



Spagnuola Chocolatier

Eric Reid '92
www.spagnuola.com



**L & L Music
Wind Shop, Inc.**

Jim Bensinger '05
www.lmusicshop.com



"Trace" and "Dose" CDs

Billy Coulter '81
www.billycoulter.com



Joelle Nicolette

Photography, Fashion, Art

Joelle Price '03
www.joellenicolette.com



Blaq Grass

Claire Kalala '10
www.blaqgrass.bigcartel.com

**Montgomery College
Bookstore**

www.montgomerycollege.edu/bookstore



Photo illustration by Clint Wu



Then...

In a 1994 photo taken on the Rockville Campus, a student studies a lab specimen through a **monocular microscope** as his professor observes.

...and Now.

In a recent photo taken in the new Science Center at the Rockville Campus, a Biology 101 student observes a slide through one of the many new **binocular (two ocular lenses) microscopes**, which also have an extra level of magnification, purchased for the opening of the new 140,000-square-foot building. Among the many additions to the center are new **thermal-cycler machines** used to amplify segments of DNA via the polymerase chain reaction (PCR) process, **spectrophotometers**, which measure how much light of any wavelength is absorbed by a particular solution, and **smart work stations** for faculty in the labs. Students can use new **computers** in the labs.

For the complete listing of events at the Cultural Arts Center (CAC), the Robert E. Parilla Performing Arts Center (PAC), and elsewhere on the campuses, visit www.montgomerycollege.edu.

Music

Darlene Love. Rock and Roll Hall of Fame 2011 inductee celebrates the holiday season with "Love for the Holidays." December 23, 2011. PAC.

Branford Marsalis and Joey Calderazzo Duo. National Endowment for the Arts Jazz Master, Grammy-winning saxophonist, and Tony Award nominee Branford Marsalis and his longtime pianist, Joey Calderazzo. January 23, 2012. PAC.

Dance

Rasta Thomas's Rock the Ballet. Starring the Bad Boys of Dance. You've seen them on *So You Think You Can Dance* and *Dancing with the Stars*. Now see them in person. February 3–4, 2012. PAC.

Spring Dance Concert. Dazzling display of ballet, jazz, and tap performed by the Montgomery College Rockville Dance Company. April 27–29, 2012. PAC.

◀ Rasta Thomas's Rock the Ballet

Courtesy Robert E. Parilla Performing Arts Center

Theatre

Curtains. Musical send-up of backstage murder mystery plots, set in 1959 Boston. Music and lyrics by Kander and Ebb. February 29–March 4, 2012. PAC.

The Last Days of Judas Iscariot. Set in a dark, comedic world between heaven and hell, the play reconsiders the predicament and future of the New Testament's most infamous and unexplained sinner. April 18–22, 2012. PAC.



Branford Marsalis and Joey Calderazzo Duo ▲

Stephen Sheffield

Art

Annual Faculty and Staff Show. An annual exhibit featuring work from faculty and staff of the School of Art and Design and the Department of Visual Arts and Design at the Takoma Park/Silver Spring Campus. Through January 27, 2012. King Street Gallery, The Morris and Gwendolyn Cafritz Foundation Arts Center.

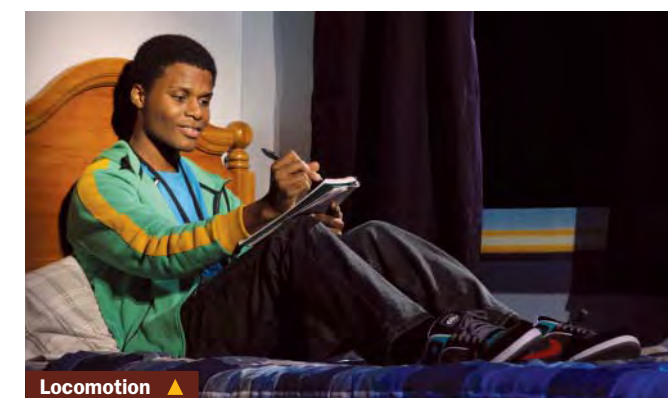
Tactile Learning. An exhibition of selected works by resident artist Ellen Hill. Hill will interpret her natural environment through assembled panels and fragments of painted, inked, and carved wood. Through February 1, 2012. Maze Gallery, The Morris and Gwendolyn Cafritz Foundation Arts Center.



Ellen Hill

Kid's Stuff

Locomotion. Journey of 11-year-old African American Lonnie Motion as he moves from unbearable tragedy to hope. January 7, 2012. PAC.



Locomotion ▲

Courtesy Robert E. Parilla Performing Arts Center

1

Hanging Around

William Vendemiatti tries out tree-climbing gear in the landscape technology course, Introduction to Arboriculture.



2

Head of the Class

In her Conversations of Consequence, a continuing education seminar with 13 students, President DeRionne P. Pollard facilitated discussions on the young-adult fiction series, *The Hunger Games*.

4

Break a Leg

Students and other cast members performing with the Montgomery College Summer Dinner Theatre warm up in the Campus Center before a Saturday evening performance.



3

Pursuit of Knowledge

The Venerable Wannachai Chayawanno, a Buddhist monk and dean of That Phnom campus in northeast Thailand, receives a demonstration in the writing lab from an MC-Germantown student.



5

Picture This

Award-winning cartoonist Ellen Forney talked to students on a sketchy subject: "Comics: the extraordinary power of words and pictures." Forney used comics and illustrations from her own novel, *The Absolutely True Diary of a Part-Time Indian*.



Montgomery College
Alumni Association
51 Mannakee Street
Rockville, MD 20850

NON-PROFIT
U.S. Postage
PAID
Suburban, MD
Permit No. 97

healthy benefits

Healthy Benefits of Membership



Montgomery College Alumni Association members gave a standing ovation to their 2011 September Seminar presenter, Brenda Salas. As the College's wellness director, Salas wielded a tape measure and wellness smarts, and doled out a healthy portion of tips to maintain weight and body proportions through diet, exercise, and mindset. September Seminars and selected Workforce Development & Continuing Education courses are free and exclusive to you when you join the alumni association.

For more alumni benefits, upcoming events, and free membership information, contact us today.

Montgomery College Alumni Association
alumni@montgomerycollege.edu
240-567-5378
www.montgomerycollege.edu/alumni



MONTGOMERY COLLEGE ALUMNI ASSOCIATION
A free membership organization of former students, graduates, and retirees of Montgomery College